

Kane County Farmer



KANE COUNTY FARM BUREAU®
Farm. Family. Food.™

Enhance the quality of life for member families;
Promote agriculture, farms & food; and,
Advocate good stewardship of our land and resources.

VOL. 87 NO. 8 AUGUST 2022

Bee a Prairie Pollinator Rain gardener

After months of planning, promoting and grant writing, our Prairie Pollinator Rain Garden expansion will happen soon ... and you're invited to be a part of it!

Encap Inc delivered final plans in late July for our Illinois shaped garden and a PUBLIC planting date will be scheduled once all plant materials are sourced. Volunteers who assist in the planting will receive a "Life's a (Pollinator) Garden" t-shirt, Pollinator resource guides and be provided refreshments and lunch on the KCFB lawn

under the spreading Sycamore tree. Better yet, they will be helping us improve the environment by installing several water quality management best management practices right along Randall Road in St. Charles.

Given the timing of the PUBLIC Planting Day, we encourage members to visit our website, www.kanecfb.com for updates and to follow us on Facebook at Kane County Farm Bureau. We will post the date and time once they are known and will also publish a Facebook event. Members who

respond to this appeal with a name, phone and email will be notified by phone or electronic means of the planting date.

In the words of that sage of popular culture, Joe Dirt, "Life's a Garden, Dig it". We invite you to help us do just that! For more information, contact Steve Arnold at 630-584-8660.



KCFB staff members (L-R) Jenna Rowe, Alice Macha, Kelcee Miller and Liz Polovin, pictured in their "Life's a Garden" t-shirts, invite you to come out and plant our Prairie Pollinator Rain Garden. Check our www.kanecfb.com website or our Facebook page for the date to be announced soon! See additional pollinator garden photos on page 3.

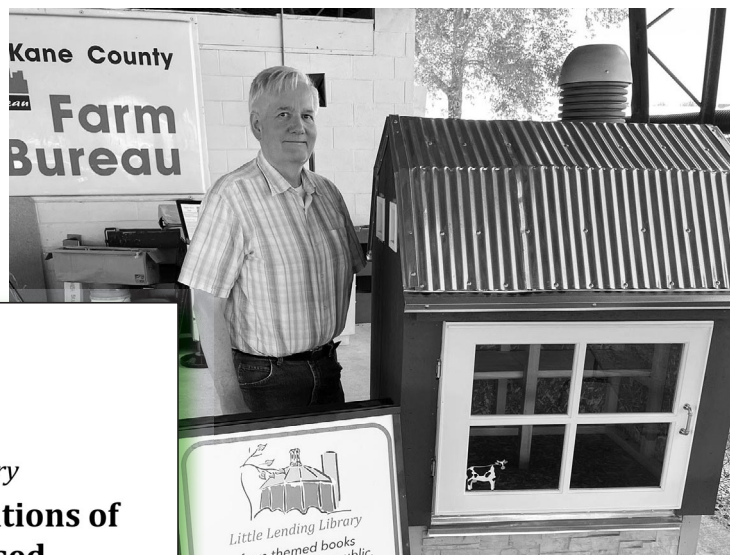
See additional pollinator info and photos on page 3

Barn siding siting!

The Kane County Farm Bureau's new "Little Lending Library" made its first appearance at the Kane County Fair. Builder and donor Mike Meuer of Elburn is shown in the photo below with his creation, a 28" x 38" x 50" gambrel-roofed barn with a 5-foot silo attached. Meuer built the cedar lined, 2 shelf library from his own design and donated his labor and the materials for its construction!

It will soon be placed on 6" posts on a concrete pad under the windmill at the Kane County Farm Bureau for members and the public to drive by and borrow books about agriculture farms and food.

See more photos on page 7.



Little Lending Library builder Mike Meuer of Elburn poses next to his creation. If you can donate farming or food books to the new library, let us know. We'd be delighted to add them to the catalog.



Little Lending Library

We are seeking donations of new or gently used BOOKS

About farming, farmers and food

To stock our new Little Lending Library

- ### KCFB CALENDAR AUGUST 2022
- 2 KCFB Foundation Ag Board, 9 am
 - 3 IFB Region 2 Meeting, 10 am
 - 11 KCFB Foundation – Fay's Drive-Thru BBQ Pork/Chop or Chicken Dinner (3-7)
 - 11 KCFB Board of Directors, 7 pm
 - 16 Peach pick-up, 10-5:30 (pre-order form on pg. 8)
 - 18 Kane County Ag Committee, 10 am, Co. Admn. Bldg.
 - 22-25 AFBF Staff Institute, Columbus, OH
(All at KCFB, 2N710 Randall Rd., St. Charles unless otherwise noted)



VINTAGE TRUCK RAFFLE

Proceeds benefit College Scholarships, Ag Literacy programs, and local FFA Chapters

2022 GRAND PRIZE
1971 CHEVROLET C10 OR \$10,000 CASH

\$20 EACH OR 3/\$50

Drawing Thursday, Oct. 13, 2022, 7 pm
Kane County Farm Bureau, Randall Rd., St. Charles, IL

Get your tickets for our Vintage Truck Raffle!

Proceeds benefit college scholarships, ag literacy programs, and local FFA chapters. See page 4 for order form.

August Featured Food New York Strip Steaks

This month we're offering TWO different boxes of NY Strip Steaks. Choose from the box containing 4, 12 oz. delicious Inboden's NY Strip Steaks or the box containing 6, 9 oz. thick NY Strip Steaks, perfect for a weekday dinner. They are a very popular, high quality meat ready for your grill. The price for the 12 oz NY Strip Steak box for members is \$45.95 and price is \$46.95 for the 9 oz box. PLUS members always receive a 5% discount on all food products. These special steaks are available while supplies lasts for the month of August at the Kane County Farm Bureau, Randall Rd. and Oak Street in St. Charles.

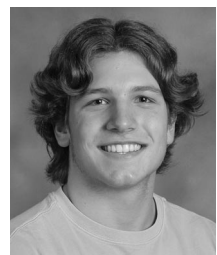
Raise scholarship funds at the John Buck Memorial Golf Outing

The 20th Annual John Buck Memorial Golf Outing with a 10:30am shotgun start/scramble format will be held on Wednesday, September 14th, 2022, at Crystal Woods Golf Course, located at 5915 Route 47 in Woodstock, 60098. Cost to register for golf and dinner is \$110 per person, prepaid before September 2nd. After September 2nd, cost is \$125. For details and to register, call 847-683-4440. Space is limited, so call early to make reservations.

All proceeds benefit the John Buck Scholarship fund, 50% of which is distributed to the Kane County Farm Bureau FOUN-

DATION, the remainder of which is split between Midwest Association of Golf Course Superintendents, and Northwestern Illinois Golf Course Superintendents Association.

The KCFB FOUNDATION John Buck Memorial Scholarship, funded through the golf outing, is awarded annually to student(s) seeking higher education in agriculture-related fields. In 2022, Michael Steimel of DeKalb and Willem Vandermeij of Geneva each received \$1,500 John Buck Memorial Scholarships administered by the KCFB FOUNDATION.

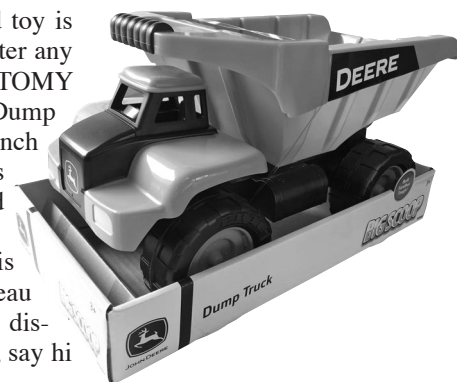


Michael Steimel of DeKalb (left) and Willem Vandermeij of Geneva are the 2022-23 John Buck Memorial Scholarship recipients.

Farm toy of the month

This month's featured toy is a big beast meant to master any sandbox or beach. The TOMY John Deere Big Scoop Dump Truck is a sturdy, 15 inch plastic dump truck that is built sandbox tough and ready for hours of play.

Regular price is \$21.34, but Farm Bureau members receive a 10% discount in August. Stop in, say hi and load up today!



Fresh Illinois Peaches!

See page 8 to order Southern Illinois peaches for pick up August 16th. The sweet taste of summer!



KCFB President Joe White of Kaneville (standing) calls to order a "retreat" of the organization's 15 member Board of Directors on July 15 in the conference room at the Kane County Cougars stadium in Geneva. Directors gathered for a full afternoon to discuss Kane County Farm Bureau's goals for 2023; learn more about a voluntary Certification program for Directors; to learn more about their roles, responsibilities and the history and purposes of Farm Bureau; and, to discuss the potential of giving Professional Members and Young Farmers a greater role in governance of the

Association. Following the Retreat, Directors welcomed 2022-23 KCFB Foundation scholarship recipients and their parents, and Foundation donors, for a Scholarship ceremony, dinner and a baseball game at the Cougars Stadium.

County to propose text amendments for farms, local food businesses

The Kane County Development & Community Services Department is working to advance the Kane County Board's "Growing for Kane Program" by proposing text amendments to the Kane County Zoning Ordinance. The proposed amendments are intended to be responsive to the changing needs of farmers and local food businesses in Kane County and to streamline administrative approvals for permits.

The proposed amendments will provide several new definitions that address the County's growing agritourism industry. The goals of the amendments are to make it easier for local

growers to sell their products directly to consumers as well as for consumers to access healthy food products and share in the farm experience through direct sales, activities, entertainment and events.

Kane County has seen an increase in proposed agricultural venues integrated with working farms. The Kane County Zoning Ordinance does not currently define and include these emerging uses. By creating new definitions and listing them in the appropriate zoning districts, the amendments will provide farmers and policy makers with clear paths for evaluating and potentially approving these uses

where appropriate in the agricultural and other areas. The draft amendments will also explicitly allow certain less intensive agritourism uses as permitted uses, thereby only requiring a permit to safely establish the use rather than going through a rezoning process.

The Development Department has also worked with multiple farmers looking to build farmstands to sell their goods directly to the public, only to find that their reasonable requests were not in compliance with the current zoning language. While one local grower was recently approved for a

(continued on page 6)

Letters of thanks from scholarship recipients

Thanks to the generosity of our members and donors, the KCFB Foundation awarded \$27,000 in college scholarships for the 2022-23 school year. Scholarship recipients and their parents were recognized at an awards ceremony on July 15. Printed below are expressions of thanks received from some of this year's 18 scholarship recipients. The KCFB Foundation will publish one or two of these messages per month to share with our readers and donors the gratitude expressed by these students for YOUR generosity.

Dear Kane County Farm Bureau Foundation –

I am writing to express my sincere gratitude to you for making the Rodholm Charitable

Trust Veterinary Scholarship possible. I was thrilled to learn of my selection for this honor.

I deeply appreciate your support of veterinary students. As I continue my veterinary education, I am so thankful to be receiving this scholarship. Through your support, it is possible for me to pursue my career goals.

*Thank you again!
Sincerely,*

*Tess Cummings
University of Illinois
CVM Class of 2024*

Dear Kane County Farm Bureau Foundation –

Thank you so much for this generous scholarship. I am honored to be one of the 2022 recipients. This is especially meaning-

ful to me as the son and grandson of lifelong farmers. Please know how much I appreciate it.

This scholarship will be assisting me with college tuition. This fall, I plan to attend the University of Missouri and study Agribusiness Management. It is my hope that the education I receive combined with my farming background will lay the foundation for a career in Ag business.

Northern Illinois has been my home my entire life. I feel blessed to have grown up in such a wonderful, generous, small community. After college I hope to come back and pay it forward with a path of service and involvement.

*Thanks again,
Colin Nesler*

KCFB welcomes Jenna Rowe to office

Jenna Rowe of South Elgin joined KCFB staff in July as a part time administrative assistant in the member services area. She is currently attending Elgin Community College where she plans to get her Associate in Arts degree. After graduating Elgin Community College, she will transfer to a university online where she will

work towards her bachelor's degree in business.

Jenna enjoys spending time with her family, music, working out, and watching baseball and football. She is a welcome addition to our staff and we encour-

age members to stop by and meet her when you come in to pick-up peaches, meat for summer BBQ's or shop for farm themed gifts in our Farm Bureau Country Store.

Welcome, Jenna!



Jenna Rowe

Your local source for feed, supplies, and so much more!

Pet Food • Propane
Salt • Delivery

St Charles and Wasco 630-584-2024



Tractor fan...future farmer?

KCFB got a visit from Amy and Peter Hammond of St. Charles on a late June morning. Peter had woken up with the urge to get a new tractor, so to KCFB they came to shop the KCFB Country Store. Peter, who visited life-size tractors in April at our Touch-A-Tractor event, added to his pint-sized tractor collection with a John Deere tractor and grain wagon and a New Holland CR8.90 combine.

When asked his age, Peter commented that he is "still very 3," and his mom mentioned that they were continuing their day by visiting a local farm and perhaps, sitting on a life size tractor.

Thank you, Peter and Amy for visiting Kane County Farm Bureau and appreciating Kane County agriculture!

Welcome new members

You receive the Kane County Farmer because you are a Farm Bureau member. If you are a farm operator or owner, you benefit from a local, state and national organization committed to agriculture and your way of life.

If you do not have direct ties to farming, your membership helps promote local farms and farming, encourages wise use of our limited natural resources and preserves farmland and our agricultural heritage while allowing you to enjoy COUNTRY insurance and the many benefits of one of Illinois' premier membership organizations.

We appreciate your membership and continued support and we welcome your comments on the content of the Farmer. We encourage you to make recommendations about farm, home, food, natural resources, renewable energy or agricultural heritage and history-related topics for inclusion in future issues of the Farmer.

KANE COUNTY FARM BUREAU BOARD ATTENDANCE												
JANUARY 2022 THRU DECEMBER 2022												
	JAN	FEB	MAR	APR	MAY	JUN	JULY	AUG	SEP	OCT	NOV	DEC
C. BRADLEY	X	X	X	X	X	X	X					
B. COLLINS	X	X	X	X	X	X	X					
C. COLLINS	X	X	X	X	X	X	X					
K. ENGEL [^]						X	*					
J. ENGEL		X	X	X	*	X	X					
G. GAITSCH	*	X	*	X	X	X	X					
B. GEHRKE	*	X		X	X	X	X					
W. KECK	X	X	*	X	X	X	X					
M. KENYON	X	X	X	X	X	X	X					
K. KETTLEKAMP	X	*	X	X	X	X	X					
D. LEHRER	*	*	*	*	*	*	*					
A. LENKAITIS			*		X		*					
D. PITSTICK	X	X	X	X		X	X					
W. SCHNEIDER	X	X	X	X	X	X	X					
J. WHITE	X	X	X	X	X	X	X					

* Attendance by electronic means. ^ Elected to Board June 2022.

Kane County Farmer

**KANE COUNTY FARM BUREAU
PUBLISHED MONTHLY**

Steven J. Arnold, Editor

Audre Pack, Bookkeeper

Elizabeth Polovin, Member Services Coordinator

Kelcee Miller, Development & Ag Literacy Program Coordinator

Alice Macha, Communications Coordinator

Jenna Rowe, Office Assistant

OFFICE: Randall Rd. between Routes 64 & 38
Address: 2N710 Randall Rd., St. Charles
PHONE: 630-584-8660
info@kanecfb.com www.kanecfb.com
OFFICE HOURS: 8:30-4:30 Monday through Friday

(USPS No. 289700)

**POSTMASTER: Send address changes to Kane County Farmer
2N710 Randall Rd., St. Charles, IL 60174**

Periodical Postage • Paid to St. Charles, IL 60174
Year Subscription: \$2.00

<p>Joe White President 47W727 Main St. Rd. Elburn, IL 60119 630-878-1726</p> <p>Wayne Schneider Vice President 721 Lindsay Lane West Dundee, IL 60118 847-428-0488</p> <p>Chris Collins Secretary/Treasurer 1143 Anderson Elburn, IL 60119 630-934-4642</p> <p>Craig Bradley 37W791 Orchard Lane Elgin, IL 60124 847-888-2380</p> <p>Bill Collins 1125 Lewis Rd. Geneva, IL 60134 630-484-6852</p>	<p>Joe Engel 15N720 Walker Rd. Hampshire, IL 60140 847-347-5561</p> <p>Keith Engel 15N587 Walker Rd. Hampshire, IL 60140 630-640-3665</p> <p>Gerald Gaitsch 10613 Brittany Ave. Huntley, IL 60142 847-669-2003</p> <p>Beth Gehrke 12N860 US Hwy. 20 Elgin, IL 60124 847-697-2538</p> <p>William Keck P.O. Box 281 Sugar Grove, IL 60554 (630) 466-4030</p>	<p>Mike Kenyon 1250 E. Main St. South Elgin, IL 60177 847-741-1818</p> <p>Karl Kettelkamp 47W407 Main Street Rd. Elburn, IL 60119 630-365-2713</p> <p>Andrew Lenkaitis 6N707 Corron Rd. St. Charles, IL 60175 630-513-9980</p> <p>Donna Lehrer 7S027 Jericho Rd. Big Rock, IL 60511 630-556-3476</p> <p>Dale Pitstick 2N118 Pouley Rd. Elburn, IL 60119 630-816-0223</p>
---	---	---

Pollinator Planting assistance needed



Volunteers who assist at the Public Planting Day for our Prairie Pollinator Rain Garden will receive a "Life's a Garden, Dig It" t-shirt (top and modeled by Jenna at right) along with refreshments, lunch and pollinator resource guide (above left) for their efforts to help KCFB improve the environment and install a learning and teaching resource on the KCFB front lawn. See the story on page 1.



Local farms awarded mini-grants

From Kane County Connects
Kane County is partnering with the Illinois Farmers Market Association (ILFMA) to match funds from the Chicago Regional Food System Fund to support greater equity and inclusion for all groups who have been, and still are, marginalized. Mini-grants provide resources to farmers, farmers markets, community organizations, and not for profits that serve Kane County's communities of color including Black, Indigenous, and People of Color (BIPOC). Celebrating its 10th Anniversary, ILFMA (<https://www.ilfma.org/>) promotes local food production and consumption by offering Illinois farmers markets resources to grow healthier and economically vibrant communities.

ILFMA granted 12 awardees \$1500 and on July 12, 2022 Kane County awarded a matching grant of \$1500 for a total of

\$3000 for each recipient. Kane County's matching grants come from the Kane County Economic Development Fund which leverages the Growing for Kane Ordinance and farms, food systems, farmers markets and organizations serving the County's minority communities with accessing locally grown food.

Mini-grants will fund a vari-

ety of initiatives and projects including an educational series about nutrition and food preparation, a garden program at School District U-46, an on-farm vegetable processing station, farmers market outreach, on farm equipment, enhanced community gardens and a pilot neighborhood farmers market on the east side of Aurora.

The following farms, farmers markets, community non-profits, and urban growers received grants:

- Garlic Breath Farm – Elburn
- Mighty Greens Farm – Elburn
- Pasek Farms – Elgin
- Rustic Road Farm – Elburn
- Charity Blooms – Aurora
- Downtown Elgin Farmers Market – Elgin
- Fox Valley Food for Health – Geneva/Fox Valley
- Glory Gardens – Batavia
- Marie Wilkinson Food Pantry – Aurora
- School District U-46 – Greater Elgin Area
- The GardenWorks Project – Batavia
- The Just Food Initiative – Batavia

\$550,000 appropriation provides FFA dues for ag education students

The Illinois Department of Agriculture (IDOA) has announced that Future Farmers of America (FFA) dues for every student taking agriculture education classes across the state will be covered starting this fall. The \$550,000 appropriation is spearheaded by State Senator Doris Turner.

It has been a priority of the Pritzker administration to make farming and agriculture more accessible, and these dollars help to diversify the make-up of the FFA organization. The elimination of dues makes Illinois a FFA

affiliation membership state, ensuring every student that is enrolled in agricultural education will have FFA membership dues automatically paid, making them a FFA member. "In Illinois, we're making it so students can choose their extracurriculars based on what interests them the most, not what they can afford," said Governor Pritzker. "It's been a priority of mine to make agricultural education more accessible and widely recognized throughout my administration. It's why I signed into law two measures to include ag

classes in our state college admission requirements, and it's why I'm proud to implement Senator Doris Turner's initiative to waive FFA membership fees for all Illinois students."

"I am proud to support the next generation of Illinois agricultural enthusiasts by helping alleviate the financial burden of membership dues," State Senator Doris Turner (D-Springfield) said. "The more bright minds we can bring in to help solve the agricultural problems of tomorrow, the better we all will be in the future."

Young Leaders update

The Young Farmers gathered at the Kane County Farm Bureau on Thursday, June 16th for pizza and a quick chat. Kelcee Miller discussed past Farm Bureau, Foundation, and Ag Literacy events. The group discussed the details for Volunteer Appreciation Night and the scholarship award ceremony that took place at a Kane County Cougars baseball game last month as well as the Kane County Fair details such as the yearly bucket raffle, door prizes, and activities. Carolyn Gehrke-Brummel gave a District 1 Report update and the group brainstormed potential ideas for a district social event with other counties in the coming weeks and the details for the upcoming

Discussion Meet that will take place on August 15th at 6:00pm at the DeKalb County Farm Bureau.

Other new business discussed was the finalizing of details for their Little Lending Library, needs for the Pollinator-Rain Garden expansion later this month, as well as the status of the Vintage Truck Raffle that will be auctioned off on October 13th, 2022.

If you or someone you know is between the ages of 18-35 with an interest in networking and socializing with others who share an interest in the agriculture field, give us a call (630-584-8660) or better yet stop on by the office to become a member today!

You are cordially invited to
20th Anniversary John Buck Scholarship Golf Outing



Join us for Golf, Food, and Fun!!



Outing Details

Please join us for the 20th Anniversary golf event honoring our good friend and mentor, John Buck! Enjoy range time, 18 holes of golf with a cart, lunch during the round, cocktails, dinner, and more!
\$125 per person.

**Crystal Woods Golf Course
Woodstock, IL
Wednesday, Sept. 14th, 2022**

8:00 – 9:30 AM Driving Range & Registration
10:00 AM Shot-Gun Start – Scramble Format
3:00 PM Cocktails
4:00 PM Dinner

All proceeds go to benefit the John Buck Scholarship fund, which is distributed 50% to Kane County Farm Bureau Foundation, and 50% to MAGCS & Northwestern Illinois Golf Course Superintendents Association.

Please provide Participant Name(s) below:

Sign Up Details

- Golf & Dinner –*pre-paid (\$110.00)
- Golf & Dinner after Sept. 2nd (\$125.00)
- Dinner & Cocktails Only (\$50.00)
- I cannot participate, but enclosed is my donation of \$_____.

My Check is enclosed

ALL REGISTRATIONS AND PAYMENTS ARE DUE BY FRIDAY, SEPTEMBER 8TH

We will be happy to arrange your team if you do not have a complete foursome.
Limited to the first 144 paid entries.

Make checks payable to KCFB foundation

Mail Payment to: Ambrose Seyller
14N937 U.S. Hwy 20
Hampshire, IL 60140
(847) 683-4440

Please contact us by phone to pay by credit card.

Please contact us for additional information.

Thank you for your support!

Kane County Farm Bureau
FOUNDATION
for the future of farms & food

August 11
Drive Thru BBQ
Fundraiser

Please reserve:

Pork chop dinners Chicken quarter dinners
 Pork chop/chicken combo dinners

Please enclose payment of \$16 per dinner. Make checks payable to Kane County Farm Bureau Foundation

Name _____

Address _____

City, State, Zip _____

Visa / MC _____ Exp. date ____ / ____

CRV _____ Phone (_____) _____

Return to: KCFB Foundation • 2N710 Randall Rd., St. Charles, IL 60174 or call 630-584-8660.

AG LITERACY CORNER

By Kelcee Miller, Development & Ag Literacy Program Coordinator



Hello Kane County!

By the time you are reading this article, there will be roughly four months of the year left. Four months! Can you believe that? Like Smash Mouth said, “The years start coming and

they don’t stop comin,’” and this year of all years seems to certainly be flying by!

How has your year gone up until this point? Are you holding yourself accountable to your goals, values, and beliefs you set whether it is personally, pro-

fessionally, financially, emotionally, etc.? If yes, great! Keep up the hard work and keep that momentum going! And if your answer is not so confident that’s okay! There is still plenty of time to get things back on track! Now is the perfect time to dial in your focus and sprint hard to the finish line!

So with this short sprint ahead, ask yourself, what does your life look like? What does your career look like? What does your living situation look like? What kind of partner or friend group are you with? What do you

hope to accomplish or work towards? How do you want to feel and think? I encourage you to sit down and really think about where you want to be at the end of the year – bring those thoughts, feelings, and images to life by writing or drawing them out. There is great power in visualization and manifestation.

I think too often we get into these coast modes in life where we just go with the flow without much control of the wheel or we are too busy looking in the rear view mirror and sooner or later we will crash. If we continue to coast we will never accomplish what we truly want and desire out of life and if we spend too much time focused on the past we will not receive new outcomes and will miss the gift here in the present. Just like driving a car, achieving our goals and success in every aspect of our lives requires forward focus, a detailed route of how we are going to get

there, and an end destination of where we want to be.

I was guilty of living on cruise control without even knowing it. Sure, I was working hard towards my yearly goals and having some fun along the way, but I spent too much time coasting until one day it all hit me, hard! I knew I wanted more for myself and more out of my life. I didn’t want to settle for a life that I was not truly happy or fulfilled with, so I took control of the wheel again. I dialed in my focus forward, wrote out what I wanted to achieve, and hit the gas pedal!

I encourage you all to take some time to reflect on how your year has gone so far and how you want to finish the last few months. There is plenty of time to accomplish great things, learn something new, and become an improved you! Dial in that focus and hit the gas!

Happy August!

Book of the month

Did you know beef provides us with more than just a juicy tender steak or a delicious hamburger? Many different products and by-products of beef cattle can be found in your home such as soaps, cosmetics, clothes and pantry! Let’s get movin’ to the good stuff!

The book of the month for August is a jam packed, informative book by Susan Anderson and JoAnne Bugey, *Beef Cattle in the Story of Agriculture*.

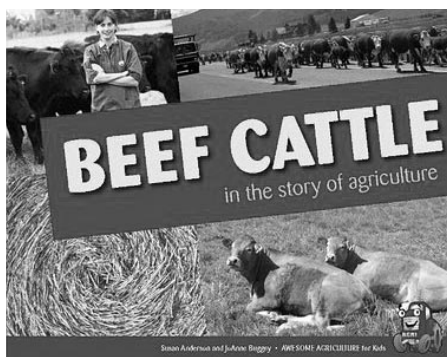
Agri-Culture, Agri for short is the tour guide for readers throughout the book about all things beef cattle. Agri breaks down each step throughout the journey into the five main parts of agriculture: production, processing, distribution, marketing, and consumerism. With Agri’s expertise, readers will learn

about beef cattle from beginning to end!

With each and every page, Anderson and Bugey have provided readers with an understanding of agricultural vocabulary, interesting facts, and fun “did you know” facts about beef under each of the five domains of agriculture. From learning about the different breeds of cattle, how and why cattle can eat so much, different cuts of beef we see in the supermarket, to the by-products of beef we use on a daily basis, readers will have a greater appreciation beef and for the men and women who play a role in process of beef cattle from the barn to your household!

To learn about beef cattle,

come on in to the Kane County Farm Bureau FREE KCFB Library and check out *Beef Cattle in the Story of Agriculture*. The Kane County Farm Bureau Library was made possible by Bob Konen and Dean Dunn, and later supported by the Bob Konen Family.



Beef Cattle in the Story of Agriculture by Susan Anderson and JoAnne Bugey

IL Ag in the Classroom grant opportunities

Illinois Ag in the Classroom is excited to be offering two classroom grant opportunities for Illinois teachers for the upcoming school year! Educators can apply for \$250 in ag-accurate books or \$300 for a new ag-themed project for your classroom. Applications are due Friday, October 14. Apply for the Book Grant: <https://iaitc.co/bookgrants>.

Apply for the Project Grant: <https://iaitc.co/projectgrants>.

Join IATIC on Tuesday, August 9 at 10:00 for our hour-long “Get-a-Grant” Workshop to learn tips and tricks to maxi-

mize your chances of getting your grant approved.

Sign up for the Get-a-Grant Workshop: https://ilfb-org.zoom.us/webinar/register/WN_V9UtEZYNT06ZhCLsMuYatw.



Helping you protect what matters most



Jeffrey Orman
Agency Manager
St. Charles
630-584-0001



Bob Effner
St. Charles
630-588-2002



Bobbi Boston
St. Charles
630-485-5155



Kelly Landorf
St. Charles
630-762-1328



Jeff Jones
St. Charles
630-492-5293



Norma Grathoff
St. Charles
630-492-5324



Donna Tonovitz
St. Charles
630 549 7694



Orazio Difruscolo
St. Charles
630 549 7696



Ashraf Gerges
Aurora
630 898 3750



Edward Stuehm
Geneva
630 845 8245



Michael O'Brien
Geneva
630 762 0852



Victor Alvarado
Elgin
847 742 0003



Luke Fawkes
Elgin
847-742-0002



Sherry Lochen
Elgin
847-742-0004



Bob Riedel
West Dundee
847-428-5434



Gary Bolger
West Dundee
847-531-6110



Sherri Schramer
Elburn
630-365-9500



Dominick Davero
Elburn
630-365-3737



Charles Quick
Hampshire
847 683 2100



David Berreles
Hampshire
630 683 2100



Dan Cooper
Sugar Grove
630 466 9600



Ted Schuster
Sugar Grove
630 466 9600

*COUNTRY Financial® is the marketing name for the COUNTRY Financial family of affiliated companies (collectively, "COUNTRY"), which include COUNTRY Life Insurance Company®, COUNTRY Mutual Insurance Company®, and their respective subsidiaries, located in Bloomington, Illinois.
1220-509HC_07683-7/26/2022



Volunteer Opportunities with Ag in the Classroom:

Want to help make a small impact that will have a lasting impression? Consider volunteering! Kane County AITC is looking for volunteer presenters to help them extend our reach and to enhance our connection with our youth. If you are interested in providing assistance, contact Kelcee at aitc@kanecfb.com or give her a call at 630-584-8660.



Before the July 4th holiday weekend kicked off last month, our staff assisted with Pasek Farm’s first event of the summer. The Pasek Farms, located off Rt. 20 in Elgin, held an open house event where customers could come out and see their general store filled with farm to table products as well as other locally made products. Customers even had the opportunity to climb inside two of the Pasek’s tractors, play Ag-Jenga, and receive some KCFB and ag-literacy goodies.



Farm Facts @ Fun

Compiled by Kelcee Miller, Ag Literacy Coordinator

BEEF

Cheeseburger sloppy joes a beefy treat

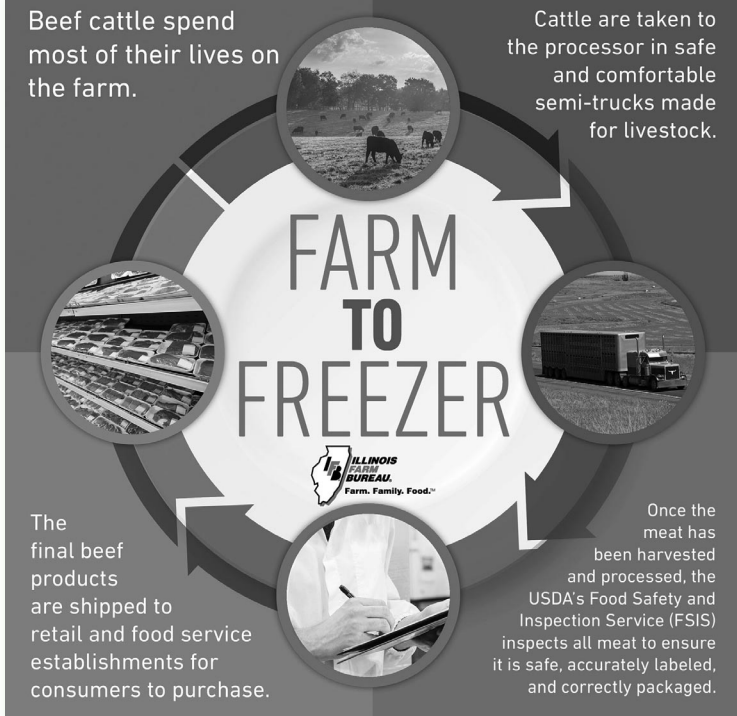
Ingredients:

- 1 1/2 lbs ground beef
- 1/2 onion (chopped)
- 1/2 cup ketchup
- 1 cup beef broth
- 2 tbsp mustard
- 1 tsp pepper
- 2 tbsp Worcestershire sauce
- 8 oz cheddar cheese (shredded)
- 6 buns

Directions

- 1) Brown the ground beef and onion in a large skillet over medium heat (drain excess grease)
- 2) Add in the beef broth, ketchup, mustard, Worcester-

- shire sauce and pepper
 - 3) Cook uncovered for approximately 5-10 minutes
 - 4) Fold the cheddar cheese into the meat mixture and heat until the cheese is melted
 - 5) Serve warm over hamburger buns and enjoy!
 - 6) Enhance your sandwich with your favorite hamburger toppings such as lettuce, tomatoes, pickles, and/or bacon!
- This recipe found and more ideas may be found here: <https://www.eatingonadime.com/cheeseburger-sloppy-joes-recipes/>



Make a cow headband

Supplies

- White, black, and pink construction paper or cardstock
- Scissors
- Stapler
- Glue

Directions

Fold the white sheet in half

- lengthwise and then cut along the folded line.
- Staple those two strips together (depending on the size of the child's head, you may need a 3rd strip).
- Cut out black blobs to be used as the cow spots and then glue them onto the long white strip.



To make the ears, cut two rounded triangles out of white paper. Next, cut the same shape but smaller out of pink paper and then glue the pink on top of the white paper. Fold the bottom of the ear slightly and staple to add dimension.

When cow spots are dry, staple the white strip to form a completed circle headband. Then staple the ears on each side of the headband.

Place on top of your head and get moovin'!

This craft and more ideas may be found here: <https://kansaliving-magazine.com/articles/2017/05/11/kids-craft-cow-headband>.

Beef cattle spend most of their lives on the farm. Calves are weaned at 6-10 months of age. After the calves are no longer dependent on their mothers for food, they are fed a diet with a mix of grass and grain-based foods (including grass in the pasture during the summer and hay in the winter). Their balanced diets are often prescribed by animal nutritionists to provide the best quality of meat.

Once they reach market weight (usually 1,200-1,400 pounds), cattle are taken to the processor in semi-trucks which are special by providing a safe and comfortable environment for livestock during transportation.

Once the meat has been harvested and processed, the USDA's Food Safety and Inspection Service (FSIS) inspects all meat to ensure it is safe, accurately labeled, and correctly packaged. This process enables you to have the safe, high-quality meat you need.

- Storing your meat in the proper way is super important when providing the best steaks in town. Beef products are known for how easily they freeze. Products can be frozen in their original packaging but should be transferred to airtight packaging to preserve the great quality.
- Use the Illinois Beef Directory to store your favorite cuts in your freezer all year round! <https://www.illinoisbeef.com/membership/local-beef-directory>.

Beef

S O L V C T D N O R L H L R A W J S F S
 P R S R R Z I A R E M G S N C A O T E T
 C O B X O E X N E H Z K I C Q E H G E N
 A E X V T A K V Z N F A K T Z F A Y B E
 T Z B O I W S S E C R G R A S S L N O I
 T X R X W T U T E G O N Y F T M F F R R
 L P G K E P A J R Q U M S L Z V A I W T
 E T L Y P P Q M F E L O H W T M C P E U
 T U P L M B V F I Y S S G G I J K M S N
 B U Y D I N S H M N F T L L R C R E X H
 S Z U R L R H Z X H S E Y V T O N M C Z
 V V O N K T O J X O I A U N V Q U I M X
 N N Y P M T L V R P U K N E Q U W N Z X
 A K C W N K E O A A J S U L B Q U L D A
 Y G M P M D Y T O L T K K M L P Q E I J
 D E S I A R M R A F F E C J F F C S Z R
 K G B U T C H E R Z Q Z K S X B H A C R
 M K E Z R Y X L A C O L A R A Y E F J T
 A A A Q P N T G Y W K C X X A L W D C J
 A M J Q Z I Q Q U A R T E R V M M K Y Z

- Beef
- Bulk
- Butcher
- B-Vitamins
- Cattle
- Family
- Farm-Raised
- Flavor
- Freezer
- Grain
- Grass
- Ground
- Half
- Iron
- Local
- Market
- Nutrients
- Protein
- Quarter
- Roast
- Steaks
- Supply
- Whole
- Zinc

Name _____
 Address _____
 City _____ State _____ Zip _____
 Telephone (____) _____ Email _____ Age _____

Return to: Kane County Farm Bureau, 2N710 Randall Road, St. Charles, IL 60174 by August 15, 2022 to be entered in our drawing for a fun prize.

Prize must be picked up at the KCFB office within one month of newspaper publication.

Jokes

- Where do cows go on Friday nights?
To the moo-vies!
 - Why did the cow cross the road?
To get to the udder side!
 - What is as big as a cow but weighs nothing?
His shadow!
 - Why do cows wear bells?
Because their horns don't work!
 - What do you call a cow with a nervous twitch?
Beef jerky!
 - What do you call a cow with no front legs?
Lean beef!
- Jokes provided by:
<https://www.foodjokes.one/fruit/melon/watermelon?page=2>

Congratulations

Elizabeth Severson of Hampshire is this month's word search winner. Her name was chosen from the entries received for correctly completing last month's Word Search Puzzle. For her participation, she receives a fun prize to be picked up at the Farm Bureau with the next 30 days. (Prizes will not be mailed). Thank you, Elizabeth, for reading the Kane County Farmer and continue to watch each month for more great opportunities from the Kane County Farm Bureau.

August is ...

National

Homemade Day	1
Ice Cream Sandwich Day	2
Watermelon Day	3
Chocolate Chip Cookie Day	4
Farmworker Appreciation Day	6
Root Beer Float Day	6
Mustard Day	6
Farmers Market Week	7-13
Frozen Custard Day	8
Book Lovers Day	9
Women's Day	9
S'mores Day	10
World Elephant Day	12
Creamsicle Day	14
Relaxation Day	15
Fajita Day	18
Ice Cream Pie Day	18
Potato Day	19
World Photo Day	19
Chocolate Pecan Pie Day	20
World Honey Bee Day	20
Cuban Sandwich Day	23
Peach Pie Day	24
Waffle Day	24
Banana Split Day	25
Burger Day	25
Cherry Popsicle Day	26
Dog Day	26
Cherry Turnover Day	28
Lemon Juice Day	29
Beach Day	30
Trail Mix Day	31

National

- Back to School Month
- Catfish Month
- Goat Cheese Month
- Peach Month
- Sandwich Month

Courtesy of: <https://nationaltoday.com/august-holidays/>

Scenes from July KCFB Foundation Scholarship ceremony & Cougars game

After a stormy July 15th day, the weather cleared enough for baseball to begin! Eight KCFB 2022-23 scholarship recipients and their families, along with supporters of the KCFB Foundation scholarship program, gathered for an evening of food, fellowship and baseball at Northwestern Medicine Field in Geneva.



Clockwise from top: Scholarship recipients pose with certificates following the award ceremony. Back row, left to right – Kayleigh Kuschewski, Ella Follman, Willem Vandermeij and Michael Steimel; front row – Savannah Follman-L'Huillier, Jessica Dumoulin, Amanda Stiegel and Valentina Poggi.



Scholarship supporters taking in the game as the Cougars play the Milwaukee Milkmen;

These kids excitedly clutch their door prizes;

The Kuschewski family enjoyed the game;

The Poggi family gathered indoors to dine;

The Vandermeij family relaxing in the stands.



Check out IFB's membership benefit platform

Celebrate being an Illinois Farm Bureau® member! We're proud to offer you over 300,000 members-only discounts and corporate rates on everything from pizza and the zoo to movie tickets, car rentals and hotels! Access these benefits through our new platform at <https://ilfb.abenity.com/>

\$500 Exclusive Cash Reward
Farm Bureau Exclusive Cash Reward is exclusively for active

Farm Bureau members who are residents of the United States. \$500 Exclusive Cash Reward on the purchase or lease of an eligible new 2021/2022/2023 Ford Maverick, Ranger, F-150 or Super Duty®. This incentive is not available on F-150 Lightning, F-150 Raptor, F-650 and F-750 Super Duty®. This offer may not be used in conjunction with most other Ford Motor Company private incen-

tives or AXZD-Plans. Some customer and purchase eligibility restrictions apply. Must be a Farm Bureau member for 30 consecutive days prior to purchase or lease and take new retail delivery from an authorized Ford Dealer's stock by January 3, 2023. Visit FordFarmBureauAdvantage.com or see your authorized Ford Dealer for qualifications and complete details.

Illinois Farm Bureau members receive

\$500 EXCLUSIVE CASH REWARD*

ON ELIGIBLE NEW SUPER DUTY®, F-150, RANGER OR MAVERICK

We value our long-standing partnership with Farm Bureau and are proud to offer you exclusive savings.

FORD SUPER DUTY FORD F-150 FORD RANGER FORD MAVERICK

BUILT Ford TOUGH Don't miss out on this offer. *Visit FordFarmBureauAdvantage.com today for complete offer details!



IL cover crop initiative accepting applications

EDITOR'S NOTE: *FarmWeek* is the Illinois Farm Bureau's award-winning weekly newspaper of all things agricultural. Regular members of the Kane County Farm Bureau (farmers and farmland owners) receive this paper in their mailboxes each week as part of their Farm Bureau membership. If you are NOT receiving a weekly *FarmWeek* subscription and would like to, please call Liz at KCFB, 630-584-8600.

Kay Shipman, *FarmWeek*, reprinted with permission

American Farmland Trust (AFT) will start taking applications July 13 for a new Illinois Cover Crop Initiative (ICCI) program. The program is a partnership of AFT, Archer Daniels Midland, the Natural Resources Service (NRCS), National Fish and Wildlife Foundation and Farmers Business Network.

ICCI incentives will be available to an estimated 400 farmers enrolling up to a total of 75,000 acres. The acres may have previously been planted in cover crops. Contracts will be awarded on a first-come, first-served basis until 75,000 acres are enrolled.

Incentives include annual \$10 per acre payments with technical assistance in collaboration with farmers' trusted retail partners and conservation organizations.

Farmers have an option to sign contracts for one, two, three or four years and will be required to follow NRCS standards and specifications for managing cover crops.

AFT will work with farmers to complete contract paperwork and reduce the time burden. Acres offered for ICCI cannot be enrolled in another privately funded ecosystem market program but may be part of federal and state cost-share programs.

Enrolled farmers will self-certify planted cover crop acres at their local Farm Service Agency office on Form 578. The information will include number of acres seeded, cover crop variety and the date.

The application period will close Dec. 31, although applications are encouraged before the end of August.

As a part of the program, AFT will quantify economic and environmental benefits to be shared with farmers, ADM, NRCS and the other partners. Technical assistance will be available to anyone interested in cover crops if they participate ICCI or not.

Information on the program and the application portal is available at farmland.org/project/icci. Additional questions may be emailed to AFT at icci@farmland.org.

The AFT Illinois program is part of a \$2.6 million grant announced May 24 by ADM, NRCS, National Fish and Wildlife Foundation and Farm Business Network to accelerate adoption of cover crops in Illinois and five other Midwestern states. Other recipients include Ducks Unlimited, Kansas Association of Conservation Districts, Minnesota Soil Health Coalition and Practical Farmers of Iowa.

Amendments

(continued from page 2)

variance by the Kane County Zoning Board of Appeals, there would not need to be a variance under the draft amendments.

If approved, the proposed amendments will reduce the minimum lot size for farmstands, expand the number districts where farmstands are allowed, eliminate recurring permits, expand the potential activities for farmstands that require a special use, and make farmstands possible for farmers that specialize in one or two crops. These changes, along with a new definition for agriculture-related home occupations, are intended to lower the barrier to entry for new farmers and add another type of home

occupation for residents preparing cottage foods.

Together, these proposed amendments are intended to help the Kane County Board achieve the policy goals proposed in its Growing for Kane initiative by supporting small food farms and local farm to table sales. As outlined in the Growing for Kane Health Impact Assessment, encouraging more local food production and consumption can result in better health outcomes for Kane County residents as well as grow the local economy.

Working with the Kane County Farm Bureau, the County of Kane hopes to publish these proposed text amendments for comments through a link or QR code in the September issue of the *Kane County Farmer*. Stay tuned!

Proposed Amendment Schedule	
July 7, 2022	Meet with Kane County Farm Bureau Board for Input
July 19, 2022	Development Committee – Introduce Schedule and Direction to Proceed
July 21, 2022	Agriculture Committee – Introduce Schedule and Direction to Proceed
August 16, 2022	Development Committee – Initial Review of Draft Text Amendments
August 18, 2022	Agriculture Committee – Review Draft Text Amendments
September 1, 2022	Draft Text Amendment publication link in Kane County Farmer
September, 2022	Zoning Board of Appeals Public Hearing (TBD)
October 18, 2022	Development Committee – Review Draft Text Amendments and Comments
October 20, 2022	Agriculture Committee – Review Draft Text Amendments and Comments
November or December, 2022 County Board Adoption	



farm. We receive up to 200 pounds of steaks, roasts and ground products by August, all harvested, processed and frozen by our

local family butcher. Since my ability to chew ground beef, I have dined on "freezer beef," or local-sourced beef in bulk quantities equivalent to a quarter, half or whole animal raised on the farm.

On our farm, we raise cattle

like Grandpa did – from birth on both grass and grain, providing a combination of flavor and quality that is signature of American-raised beef. The main difference: We raise beef more efficiently with improved genetics and growth technologies. Within the last 60 years, the U.S. beef industry has reduced emissions per pound of beef by more than 40% while producing 60% more beef per animal, according to the National Cattlemen's Beef Association. A top protein source, beef also supplies 10 essential nutrients like iron, zinc and B-vitamins. And cattle farmers care, making beef a meal choice to feel great about.

My family does. On weekends, a couple chuck roasts

smoke low and slow for nine hours for a barbecue-inspired meal. I equally love my time-saving microwave cooker, which takes a pound of ground beef from frozen to browned in 7.5 minutes for a quick taco meal. Under-rated for nutrition, ground beef contains eight times more Vitamin B12, six times more zinc and more than two times more iron compared to chicken.

While we may feast on our own farm-raised beef, so do those who shop grocery stores or dine at restaurants. We raise only a couple calves to process locally for freezer beef. Most of our cattle are sold at market, destined as beef for restaurants and grocery stores, providing

the nutrition-packed protein for those who lack the space or desire to buy beef in bulk.

While grocery store shoppers have the option to buy certain cuts repeatedly, we live on the variety and quantity of steaks, roasts and ground products that cut from a quarter of the animal. That means the deep freezer in the garage dictates home-cooked meals around our house. We welcome the annual summertime replenishment of freezer beef, which resets the menu.

About the author: Joanie Stiers farms with her family in west-central Illinois, where they grow corn, soybeans, wheat, hay and cover crops and raise beef cattle, backyard chickens and farmkids.

What's new at COUNTRY?

St. Charles Agency, Jeff Orman, Agency Manager

Congratulations to Sherry Lochen who has been named the June Rep of the Month in the COUNTRY Financial® St. Charles/Elgin Agency, as announced by Agency Manager, Robert J. Effner, Sr., CLF®, LUTCF. Sherry is a great asset to our team and is dedicated to providing tangible plans for addressing the immediate and long term insurance needs of her clients through our Auto, Home, Farm, Life, Business, and Retirement products and services. Let Sherry's expertise help you! You may reach Sherry at 847-742-0004, or sherry.lochen@CountryFinancial.com, or <https://representatives.Country>

[Financial.com/Sherry.Lochen/](https://www.financial.com/Sherry.Lochen/). Congratulations, Sherry!

Aurora Agency, Alonzo Nevarez, Agency Manager

Ryan Mizgate, Financial Representative with the Aurora Agency, is our Financial Representative of the Month for June 2022. Ryan began his career with COUNTRY Financial in June of 2014 and services clients out of his office located at: 1161 Oak St., North Aurora, 60542, (630) 907-9485. Ryan's professionalism, community involvement and vast knowledge of auto, home, life, commercial and financial products make him a great person to do business with. Congratulations, Ryan!

Recruiter of the Month

Each month we honor the person who signs the most members into our organization. This month, the honor goes to Victor Alvarado! Victor has been a COUNTRY Financial Representative since December 2017.




Victor Alvarado

His office is located at 1750 Grandstand Pl., Ste. 20, Elgin and may be reached at: 847-742-0003. Thank you for your continued support of the Kane County Farm Bureau and congratulations on your success!




Putting a new twist on the bookmobile concept, Gladys Arnold tows the Little Lending Library from the Kane County Fairgrounds next door to the Kane County Farm Bureau with a riding mower, a method easier than loading it on a trailer, while KCFB President Joe White walks beside to stabilize the barn. See story on page 1.



Little Lending Library
farm themed books
for free loan to the public.

Accessible 24/7 for people to get accurate information about farms and food from its' perch in the parking lot at the Kane County Farm Bureau.

Thanks to Mike Meuer of Elburn for constructing this barn-shaped little lending library.



Welcome to the next level

This month we welcome the following KCFB members who joined our organization or reclassified their membership in January to *Regular or Professional Status:

We remind you of added perks

Regular Members	
Tyler Hout	Big Rock
Pasek Farms	Elgin
Brad Shaffer	Big Rock

that accompany your new Regular member or Professional Status and thank you for supporting KCFB's efforts at advocacy,

- education and hunger relief:
- Professional networking opportunities & engagement with farmers
- Agriculture, farm & food news delivered to your door
- New subscription to FarmWeek, the largest weekly agriculture newspaper
- Access to FarmWeekNow.com
- KCFB voting rights & ILFB delegate opportunities
- Continuing subscription to the Kane County Farmer newspaper
- Free annual registration at one of 7 statewide conferences

- 302,000 member discounts, including Ford, Lincoln, John Deere, Case IH, restaurants, hotels & travel
- Discounts at the KCFB Country Store on in-house sales of featured local foods
- *KCFB Regular membership is required of all who join our association that have a vested interest in and receive income from the production of farm products as an owner or operator of a farm business. Professional Membership status is available for all those employed in agriculture-related occupations, even with no farm income. If you are interested in "next level" membership and the benefits it carries, please contact KCFB in St. Charles at (630) 584-8660.

Thanks to our donors

The KCFB FOUNDATION offers its sincere appreciation to the following for their contributions to our hunger relief, community service, education, and scholarship programs. Names shown are contributions received June 16 – July 15, 2022.

Donor

Deb Stob in Memory of Nathan L. Wurtz
Micheal Wurtz in Memory of Nathan L. Wurtz



Beneficiary

KCFB Foundation
KCFB Foundation

We sincerely appreciate your willingness to help support agricultural education, scholarships, leadership training, and community youth education as well. We could not do it without your support!

Vintage Truck Raffle

KCFB Foundation

Please send me _____ tickets (\$20 each, or 3 for \$50)

Name _____

Address _____

City, State, Zip _____

Email _____ Phone (____) _____

Return with check made payable to Kane County Farm Bureau Foundation,
2N710 Randall Rd., St. Charles, IL 60174 or charge my:

Visa MC # _____ Exp ____/____/____

Signature _____ Date ____/____/____



CLASSIFIED ADS

CLASSIFIED AD RATES
Classified advertising rates: 20 cents per word/\$20 minimum (60 words or less). **DISCOUNTS** for members: Associate members, 20%; Voting members, 30%; PLUS members, 40%. Advance payment requested. Ads due by the 15th of every month for the next issue. No advertising (classified or display) for financial or insurance services will be accepted. Call 630-584-8660.

WANTED
CUSTOMER SERVICE- 30-35 hours weekly, M-F. Applicant must be a computer literate, self-starter, with pleasant voice and

manner, some travel possible. Office located east side of St. Charles. We offer vacation pay, self-directed savings plan, and partial tuition reimbursement. Perfect position for stay-at-home-Mom or college student. Call Bob or Laurie at 630-377-7797 to arrange interview.

Want to buy vintage & used tools. Also, we do cleanouts. Call Chris: 630-550-7182

FOR SALE
Flatbed body for mid-size truck, 19 1/2 x 8 feet, diamond plate deck. Good condition. Asking \$900. Call Drew: 630-514-2153

FREE
Free Broken Concrete, no Rebar. Call: 630-584-8660




"Fuel Is Our Life"

We offer wet hosing, bulk tank fills and package lubricants – D.E.F, Oil, Hydraulic, Diesel and Gas for all your needs.

We are a 24/7 Fuel Supplier servicing Illinois – Wisconsin – Indiana
Call us today at 847-994-3010 or visit us online at www.luckysenergy.com
Growing To Serve You Better

Bucket Raffle 2022 Winners

Winner	Prize Description/Donor
Melanie Peters	\$200 Costco Gift Card
Kim Halverson	\$50 Gift Certificate to Kuipers Family Farm Orchard Shop
Jamie Stedman	Voucher for (4) Admissions to Goebbert's Pumpkin Patch Fall 2022
Gladys Arnold	Voucher for (4) Admissions to Goebbert's Pumpkin Patch Fall 2023
Jennifer Lipumano	(4) Tickets to Kane County Cougars Baseball Game Season 2022
Britni Petrizzi	A Day in the Park FREE Admission Booklet, St. Charles Park District
Lois Burk	FunWay – FREE Skating Admission for 4 Batavia Creamery – (2) \$5 Gift Certificates
Thomas Farrell	FunWay – FREE Skating Admission for 4 Batavia Creamery – (2) \$5 Gift Certificates
Jake Von Esh	Hughes Creek Golf Course – 18 Holes of Golf with 2 Carts for a Foursome
Karen Konopka	Centre of Elgin – Individual 3-Month Silver Membership
Zack Federman	Raging Waves – (2) Full Day Admission Tickets
Jan Mayer	Elgin Symphony Orchestra – Voucher for (2) Tickets to same ESO Concert
Ray Briggs	Nick's Pizza & Pub – \$30 Certificate Sugar Grove Family Fun Center – (2) FREE Mini Golf Rounds
Gayle Politowicz	Café Roma – \$30 Gift Card
Lisa Geisler	Old Republic Kitchen + Bar – \$50 Gift Card
Sally Lopez	Stockholm's – \$25 Certificate
Mike Kenyon	Herb's Bakery – \$25 Gift Certificate
Beau Cassady	Graham's Fine Chocolates & Drinks – \$30 Gift Card
Jen Reynolds	Nothing Bundt Cakes – 10" Decorated Cake Gift Certificate
Ben Mast	Geneva Park District – (2) FREE Mini Golf & (2) FREE Sunset Pool Passes
Tammy Wesemann	Target – Kids Beanbag Toss
Savannah Williams	Mike Wurtz – Pink unicorn + sidewalk chalk, Geneva Park District – (2) FREE Mini Golf & (2) FREE Sunset Pool Passes
Jaki Herrmann	Grow Geneva – Planter + Organic Houseplant Potting Mix + Gift Card
Amelia Ostrum	Mike Wurtz – Fom-Mania Fomilator
Jim Feuerborn	Garlic Breath Farms – (3) Garlic Varieties, candle, baseball hat
Denise Ramm	J&R Feeds – Heated Poultry Founts + 3 gallon Poultry Fount
Evelyn Hawkins	Hill's Country Store – Basket of snacks + store coupons
Ashley Federman	Mike Wurtz – Pool toys + pool rafts
Matt Hulsey	Fast Frame – Framed Picture
Deanna Vargias	Lowe's – Inflatable Lawn Darts; Sugar Grove Family Fun Center – (2) FREE Rounds of Mini Golf
Brian Landcraft	Kane County Farm Bureau – ILFB Cooler, Lantern, Mini Screw Driver Set
Pete Goerke	Country House – \$25 Gift Certificate
Mike Urlacher	Ream's Meat Market – \$25 gift card + Ream's Glass
Jason Vehrs	Sam's Club – Light Up Scooter Kimmer's Ice Cream – \$20 Gift Certificate
Jen Haviland	Lowe's – Car Care Kit + Mini Wireless Speaker
Linda C.	Country House – \$25 Gift Certificate
Daniel Rasch	C & C Mulch – Grilling Tools & Accessories
Becky Vehrs	Lowe's – Table Tennis Set Nick's Pizza Pub – \$30 Gift Certificate
Sophia Pinto	Target – 24 piece Croquet Set
Ruth Weber	Kane County Farm Bureau – Ag Literacy Bundle (books, Ag-Mags, coloring books)
Nancy Heine	Meadow View Veterinary Clinic – (2) FREE pet exams, Water Bottle, & Pet Goodies & Toys
Jay Omori	Heinz Brother Greenhouse Garden Center – Piggy Watering Can + Milkweed Seed Packet + \$30 gift card
Nora Endzel	Target – Pickle Ball Set
Lincoln Cassady	Kane-DuPage SWCD – Illinois Book Bundle TownHouse Books & Café – \$50 Gift Certificate St. Charles Bowl – Family Funpack Certificate – (FREE Lane for up to 6 guests + Shoes) Mike Wurtz – Jumbo Bowling Set Sam's Club – Light Up Enclosed Junior Trampoline

Fun and fundraising at the Kane County Fair



Fairgoers to the KCFB "space" at this year's Kane County Fair assisted the Farm Bureau's not-for-profit Foundation raise funds for college scholarships and agricultural literacy through skills contests, bucket raffles and our annual Vintage Truck Raffle. In the photo below, KCFB Foundation Directors Bob Gehrke of Elgin assists a group in filling out tickets for the Vintage Truck Raffle while they watch the activities offered in the skills contests, putting, chipping, a bean bag toss and free throws.



KCFB Foundation appreciates the participation of all fairgoers in these FUNdraising activities. 2022 Bucket Raffle winners are listed at left. The Vintage Truck Raffle will conclude with a drawing on Thursday, October 13 following the Fay's drive-thru BBQ at the Kane County Farm Bureau from 4-7 pm.

Order your Vintage Truck tickets on page 4.

Drive-thru BBQ's for KCFB Foundation

Our next BBQ drive-thru is Thursday, August 11th on the parking lot at the Farm Bureau on Randall Road in St. Charles.

From 3 p.m. to 7 p.m., drive-thru diners can choose from 3 meals at \$16 each (if paid in advance), a **2 pork chop meal**; or **2 chicken quarters**; or a **1 pork chop, 1 chicken quarter combo**. All meals will come with baked beans, coleslaw, apple sauce, a roll and butter.

The Farm Bureau parking lot will be set-up for fast and convenient drive-thru service, order for the entire family! Meals will also be available on a limited basis for drive-ups without a reservation at a slightly higher, \$17.00 price.

All sales will benefit the KCFB Foundation and meal reservation, and pre-payment is encouraged. To reserve your meals and pre-pay, return the form on page 4 or call KCFB at 630-584-8660.

**KCFB Foundation/
Fay's BBQ
Drive-Thru
Fundraisers 2022**

**Aug 11
Sept 8
Oct 13**

At Kane County FB, Randall Rd.
at Oak St., St. Charles

Don't miss out on
fresh

Peaches

The Kane County Farm Bureau is now taking orders for juicy, homegrown Peaches fresh from Rendleman Orchards, a southern Illinois grower.

These delicious peaches are washed, hydro-cooled, graded to US #1 Extra, 2-1/2 inches and up in size, approximately 60 packaged in a 25 lb wax coated fancy box with a lid. They are delivered to our office on Randall Road the morning of pickup in a refrigerated truck for freshness and long lasting quality.

New add-on options this year – Rendleman Orchards Aunt Wesie's Old Fashioned Cobbler Mix or Rendleman Orchards Peach Crisp Mix. Each option has an easy-to-make mix for two, 8x8" cobblers or crisps or one, large 9x13". Each mix package is \$7.99.

The grower recommends the peaches, which are available in the month of August, for their sweetness and juicy flavor. If you like to make peach pie or cobbler, or you like to can or freeze peaches, now is the time to take advantage of this once a year offer.

Peaches are highly perishable. They are shipped when they are a little green so that when they arrive they are not bruised with juice running out of the box. The grower recommends that the peaches be refrigerated immediately when you get them unless you are planning to can or freeze them within the next day. Then when you want to use them, you can take out however many you think you will use in the next day, let them sit out in a paper sack overnight, and they should be ripe and ready to eat or cook with. Peaches should not be out of the refrigerator for more than 24 hours. If they are left out too long, they are very susceptible to mold.

The member price for a 25 lb. box is \$43.00 and Plus status members, \$40.85; non-member price is \$45.00. PAYMENT IS DUE WITH ORDER. You can order by filling out the form and sending it in with your check, or call the Farm Bureau at 630-584-8660 and pay with a Visa, MasterCard, or Discover. Pick-up will be Tue, August 16 from 10:00am – 5:30pm at the Farm Bureau office.

Quantity

_____ \$43.00 /box (members) \$40.85/box (Plus), \$45.00/box (Non-members)
_____ Aunt Wesie's Old Fashioned Cobbler Mix _____ Peach Crisp Mix (\$7.99 each)

Amount Enclosed: _____

Name: _____

Telephone Number: (_____) _____

Member Number: _____

Credit Card #: _____ Exp Date: _____ CVV _____

Mail to: Kane County Farm Bureau, 2N710 Randall Rd., St. Charles, IL 60174
or call 630-584-8660

DEADLINE FOR ORDERING IS 4PM Wednesday, August 10

Pick-up is at the Farm Bureau on Tuesday, August 16 from 10:00a.m. - 5:30 p.m.