

# Kane County Farmer



**KANE COUNTY  
FARM BUREAU®**  
Farm. Family. Food.™

Enhance the quality of life for member families;  
Promote agriculture, farms & food; and,  
Advocate good stewardship of our land and resources.

VOL. 84 NO. 12 DECEMBER 2019

## Scholarships to help local students study agriculture

The Kane County Farm Bureau FOUNDATION is pleased to announce that scholarships are available to members or dependents of members who wish to pursue higher education

for a career in an agriculture related field. The applications are for the 2020-21 school year.

College students and high school seniors are invited to apply for these Kane County

Farm Bureau FOUNDATION scholarships. Go to [www.kane.cfb.com](http://www.kane.cfb.com) and click on "Scholarships & Internships" to download an application, or, pick one up at the KCFB office, Randall Rd and Oak Street in St. Charles. A brochure is also available online to assist students in identifying potential careers and areas of agriculture related study.

Farm Bureau internships are also available for the 2019 winter, and 2020 spring and summer breaks. A separate Internship application is available on the website. The KCFB FOUNDATION provided 19 scholarships last year and since 1989 has awarded over \$500,000 in tuition assistance to

local college students.

### General Agricultural Scholarships (up to 10 available)

To be eligible for a Kane County Farm Bureau general agricultural scholarship, the member or dependent must have been a member in good standing since February 1, 2018. The student must also be planning an agriculture related career. A brochure is available to assist students in identifying those careers and areas of study.

### FOUNDATION President's Scholarship (1)

The President's Scholarship is reserved for the high school senior among Foundation scholarship applicants with the most outstanding application. The

President's Award Scholarship will provide a minimum \$1,500 to be applied towards tuition.

### John Buck Memorial Scholarships (2)

An endowment to the Foundation, supplemented by an annual John Buck Memorial Open golf outing, provides funds for two (2) \$1,500 scholarships for higher education for agriculture students. Any student in Kane, DeKalb, McHenry, Boone, Lake, DuPage or Will County is eligible to apply. A similar scholarship program has been established by the family through the Midwest Golf Course Superintendent's Association. Buck was the founder of Buck Brothers, Inc. and J.W. Turf, (continued on page 6)

## Young Farmers receive high honor

Congratulations to the Kane County Farm Bureau Young Farmers committee on being named the winner of a prestigious Illinois Farm Bureau award. Only one county committee each of the 5 membership groups in Illinois can receive the IFB Harvest for ALL award. Membership groups are based on total county members, with group I having the lowest number of members, and group 5 having the highest. Kane County is a part of membership group 5, along with 19 other Counties, including nearby Cook, DuPage, DeKalb, Lake and McHenry counties.

For the 17th year, the KCFB Young Farmers will receive the IFB Harvest for ALL award for their membership group. This award is presented to the committee with the highest achievements in helping feed the hungry through a combination of Pounds of food donated, dollars donated and volunteer hours worked. Young Farmers play a key role in encouraging farmers and community members alike to donate and help restock the shelves of local food pantries as well as through their own donations and service hours. The group also coordinates an annual FFA Acquaintance evening at

the Northern Illinois Food Bank where members of the Young Farmers and high-school FFA members can get acquainted and provide a valuable community service.

In 2019, Young Farmers and other Farm Bureau volunteers helped the Lenkaitis family of rural St Charles host a Dairy Open House and Tour, serve over 1,000 ice cream cups as part of an Ice Cream Social, and put the KCFB Foundation over the top in it's 10,000 Gallon Challenge, an effort to contribute 10,000 gallons of milk to local food pantries.

Projects are submitted by the end of August, and then evaluated blind by 3 evaluators. Those selected as most outstanding projects or project winners will be recognized at the IFB Annual Meeting in the Exhibit Hall, during a December Awards Ceremony and with a certificate. Carolyn Gehrke, 2018-19 committee chair, will be presented with this award at the 2019 IFB Annual Meeting at the Palmer House in Chicago on Sunday, December 8th. Congratulations Young Farmers!

### DECEMBER FEATURED PRODUCT

## Holiday Ham

The special this month is delicious ham for your holiday dinner. Each ham is individually foil wrapped and boxed, which makes them perfect for holiday entertaining or as gifts. They vary in weight from about 8-10 lbs for traditional (\$3.86 per lb member price) and 8-9 pounds for spiral (\$5.81 per lb. member price). Order yours today by sending in the form found on page 4 or calling the Kane County Farm Bureau at 630-584-8660 by Wednesday, December 18 at noon. Pick-up is at the Farm Bureau on Monday, December 23.



### KCFB CALENDAR DECEMBER 2019

- 7-10** IAA Annual Meeting, Chicago
  - 12** Board of Directors, 7:00pm
  - 15** Holiday Ham Orders Due, 12pm
  - 18** Citrus Pick-Up, 10am-5pm, Heinz Brothers, St. Charles
  - 18** Holiday Ham orders due
  - 19** County Agriculture Committee, 10am
  - 23** Holiday Ham Pick Up 12-4:30pm
  - 24** Office Closes at noon for Christmas Eve
  - 25** Office Closed for Christmas Day
  - 26** Office Closed
  - 30** CDL Random Test Consortium Application Due Date
- (All meetings/events are at KCFB unless otherwise indicated)

## Just in time for Christmas!

Tickets are now available for the KCFB FOUNDATION's 2020 Vintage Truck Raffle. They make great stocking stuffers!

The Grand Prize this year is a 1969 Chevrolet C/10 pickup truck. As in past years, Raffle ticket stubs will provide FREE admission to Touch-A-Tractor, April 17-19, 2020 on the lawn at Kane County Farm Bureau.

Tickets are \$15, 2/\$25 or 5/\$50 and ticket sales help provide Ag Literacy programs and

college scholarships for Kane County students.

Return the form on page 3, stop by, or call the Kane County Farm Bureau at 630-584-8660 to purchase your tickets with VISA or MasterCard. Request tickets by December 18 and we'll mail your ticket stubs in time for Christmas gift giving!

The winning ticket will be drawn at the 4-H Blue

Ribbon Sale at the 2020 Kane County Fair.



The KCFB Foundation will sponsor a Vintage Truck Raffle to raise funds for college scholarships and ag literacy programs. The grand prize in the 2020 raffle will be a 1969 Chevrolet C-10 pickup truck.

## Christmas shopping at Kane County FB

Look no further, the KCFB Country Store can be your one-stop-shop for holiday gifts! Offering everything from the perfect, fresh-cut Christmas tree, Stocking Stuffers, Santa gifts, and much, much more; we have what's on your list.

Let us be your ERTL farm toy supplier as well. We're no Toyland, but we have a variety of farm toys sure to put a smile on a kid's face.

\*ERTL is known worldwide as the leader in farm toys for nearly 70 years and we are proud to present this year's line-

up of officially licensed die cast toys and replicas.



Visit the Kane County Farm Bureau's Country Store for a selection of farm related Christmas stocking stuffers including Teeple Barn mugs and bags and more.

## Farm Toy of the Month

Our Country Store is bursting with John Deere, Case IH, New Holland, Farmall, Allis Chalmers, and Challenger farm toys to fulfill your holiday shopping needs.

Big toys are always the most popular ones, aren't they? This month we are featuring a John Deere Plastic Pedal Tractor for \$112.99. This easy to pedal tractor has a chain drive, turf-tread

tires and is suitable for ages 3 and up. Younger farmers may like the John Deere Tri-cycle for only \$52.48. Real life farming requires "real-life" toys like these!

Farm Bureau "PLUS" status members save 10% on farm toys and merchandise in our Country Store, and 5% on edible products! Supplies are limited, so

we'll see you soon!



## Fresh Citrus

We have limited quantities of Citrus available. Perfect for the holidays & for gift giving! KCFB will have oranges, grapefruit & clementines, as well as limited quantities of nuts & chocolates. Call 630-584-8660 for more information.

# IL Specialty Crop Conference—more than 160 speakers, exhibitors

The Illinois Specialty Crop Conference (ISCC) will be held Jan. 8-10, 2020, at the Crowne Plaza Hotel in Springfield. The conference, which features nearly 100 speakers and 60 trade show exhibitors, will again host five concurrent pre-conference workshops, general sessions and breakout sessions aimed at helping Illinois specialty growers cultivate their operations.

On Wednesday, Jan. 8, participants may attend one of the pre-conference workshops, including: Pumpkin Production, Cut Flowers, Protected Culture and Hemp.

A special opportunity for farmers on Wednesday, Jan. 8, begins at 8 a.m. as the University of Illinois Extension will conduct a full Produce

Safety Training Workshop. This workshop will satisfy the Food Safety Modernization Act (FSMA) Produce Safety Rule requirement stating, “At least one supervisor or responsible party for your farm must have successfully completed food safety training at least equivalent to that received under standardized curriculum recognized as adequate by the Food and Drug Administration.” All qualifying fruit and vegetable growers must be in compliance by Jan. 26, 2020. Workshop participants will receive the manual and certificate for only \$50. This is a \$70 saving. Deadline for registration for this event is Dec. 20, 2019.

On Thursday, Jan. 9, the convention’s keynote speaker, Janice Person, CEO & Founder

of JPlovesCOTTON, LLC will discuss storytelling and why the impacts are so significant and something that more farms should consider working into their marketing and advocacy efforts. Person became known as JPlovesCOTTON for her tweets and blogging about her favorite fiber over the past decade. However, it is her role as a leading voice and advocate for connecting farmers and the public that really sets her apart.

Participants also are invited to attend breakout sessions on Thursday, Jan. 9 and Friday, Jan. 10 featuring:

- Fruits
- Vegetables
- Herbs
- Beginning Farmer
- Agritourism
- Business Development

• Of Special Interest  
The 31st annual Apple Cider Contest and 18th annual Hard Cider Contest will again be held in conjunction with the conference, with winners being announced during Thursday evening’s banquet.

To receive registration materials or to obtain exhibitor information, please contact Charlene Blary at 309-557-2107 or cblary@ilfb.org. A detailed conference agenda, registration and cider contest information can be viewed at specialtygrowers.org.

Illinois Specialty Growers Association (ISGA) is an allied member of United Fresh Produce, a national organization representing the produce industry. Founded in 1989, ISGA is a non-profit membership organization supporting and advocating the promotion, research and education efforts within the specialty crop industry. There are over 3,600 established specialty crop farms utilizing more than 81,250 acres to produce over 472 million dollars in sales annually within Illinois.

## KCFB names new Ag Literacy Coordinator

Amy Cook is very pleased to be taking on the role of Ag Literacy Coordinator. She has organized educational programming for farmers, educators, chefs, business owners and schools kids in settings ranging from large conferences to farm tours. Most recently serving as executive director of the Farmer Chef Alliance, she has also consulted with FamilyFarmed, Artisan Grain Collaborative,

Northern Illinois Food Bank, and other organizations.

Amy enjoys finding just the right expert speakers and locations to give people the insight needed to understand our food system. She is looking forward to working with area educators and farmers, connecting two of the most important “influencers” on what we eat and how our land is maintained.



Amy Cook

## IDOA hemp forum slated

The Illinois Department of Agriculture will host a Hemp Summit on December 17th at the Orr Building on the Illinois State Fairgrounds. The Illinois Hemp Summit follows the release of USDA’s 2019 Hemp Rules that have raised questions and concerns amongst Illinois hemp farmers and their advocacy groups.

“We’ve heard from the hemp farming community and understand their concerns related to the USDA rules,” said Jeff Cox, IDOA Bureau Chief for Medicinal Plants. “The summit will provide a great opportunity

to provide an in-depth presentation on the USDA’s rules and the implications for Illinois’ emerging hemp industry.”

The Summit’s agenda is structured to optimize the distribution of information and limit repetition – there will be three separate panels, each consisting of three to four presenters. “We’ve assembled grower, processor and university researcher panels to share their unique perspectives, contributions, lessons learned and visions for the future of the hemp industry in Illinois,” said Cox.

Hemp Benchmarks, a lead-

ing provider of financial, business and industry data for the North American hemp markets will be the final presenter of the day with a presentation on market dynamics. Information on the additional panels will be available in the coming weeks.

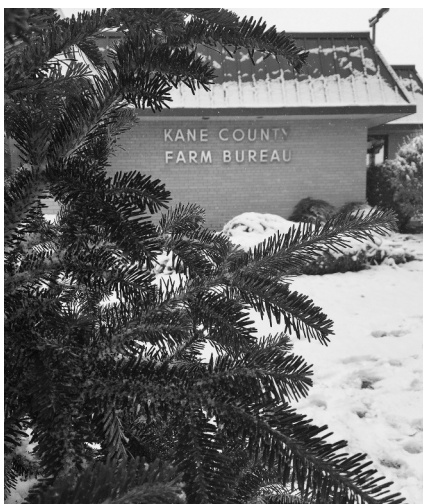
Tickets for the Summit are \$25 and include lunch.

Those interested in attending can register online at <https://www2.illinois.gov/sites/agr/Plants/Pages/Hemp-Summit.aspx>. Space is limited and registration will be handled on a first come first served basis.

## Christmas tree discount for Kane County Farm Bureau members

Marks’ Tree Farm, which has been doing business in St. Charles for three decades, will again establish a Christmas tree lot at the Kane County Farm Bureau between Thanksgiving and Christmas Eve. Marks’ provides quality, fresh cut Fraser Fir, Balsam Fir, Spruce and White Pines grown on their farm in Northern Wisconsin. They are also happy to offer evergreen wreaths and crosses, perfect for doors or walls that need a little “sprucing” up!

Kane County Farm Bureau members will receive a \$10.00 discount on all trees on the lot. We hope you take advantage of this convenient and money saving member service. And, while you are at the Farm Bureau, stop inside for holiday gift ideas including farm toys, puzzles, branded apparel, and a selection of local meats, honey, BBQ sauces, and much, much more!



*Happy Holidays*  
from the Kane County Farm Bureau

**Beef store is now open!**  
By appointment only

**farmdirectBLACKANGUS.com**

100% hormone free beef.  
Selling individual cuts. Buy as little or as much as you want.

**815.895.4691**  
Mark & Linda Schramer, Owners  
8N840 Lakin Road, Maple Park

**Sample Packs make great gifts!**

KANE COUNTY FARM BUREAU BOARD ATTENDANCE												
JANUARY 2019 THRU DECEMBER 2019												
	JAN	FEB	MAR	APR	MAY	JUN	JULY	AUG	SEP	OCT	NOV	DEC
C. BRADLEY	X	X	X	X	X	X	X	X	X	X	X	X
B. COLLINS	X	X	X	X	X	X	X	X		X	X	
C. COLLINS	X	X	X	X	X	X	X	X	X	X	X	
J. ENGEL	X	X	X	X	X	X	X	X	X	X	X	
G. GAITSCH	X	X	X	X	X	X		X	X	X	X	
B. GEHRKE	X		X	X	X	X	X	X	X	X	X	
W. KECK		X	X	X	X	X	X	X	X	X	X	
M. KENYON	X	X	X	X	X	X	X	X	X	X	X	
K. KETTLEKAMP	X		X	X	X	X	X	X	X	X	X	
D. LEHRER	X	X	X	X		X		X	X		X	
A. LENKAITIS		X	X	X	X	X		X		X	X	
N. LONG	X	X	X	X	X	X	X	X		X	X	
D. PITSTICK	X		X	X	X			X	X	X	X	
W. SCHNEIDER	X	X	X	X	X	X	X	X	X	X	X	
J. WHITE	X	X	X	X	X	X	X	X	X	X	X	

*Welcome new members*

You receive the *Kane County Farmer* because you are a Farm Bureau member. If you are a farm operator or owner, you benefit from a local, state and national organization

committed to agriculture and your way of life. If you do not have direct ties to farming, your membership helps promote local farms and farming, encourages wise use of our limited natural resources and preserves farmland and our agricultural heritage while allowing you to enjoy COUNTRY insurance and the many benefits of one of Illinois’ premier membership organizations.

We appreciate your membership and continued support and we welcome your comments on the content of the *Farmer*. We encourage you to make recommendations about farm, home, food, natural resources, renewable energy or agricultural heritage and history-related topics for inclusion in future issues of the *Farmer*.

**Kane County Farmer**  
KANE COUNTY FARM BUREAU  
PUBLISHED MONTHLY

Steven J. Arnold, Editor

Audre Pack, Bookkeeper  
Elizabeth Polovin, Member Services Coordinator  
Jim Reynolds, Bookkeeper  
Amy Cook, Ag Literacy Coordinator  
Alice Macha, Communications Coordinator  
Sindhu Saveen, Membership Assistant

OFFICE: Randall Rd. between Routes 64 & 38  
Address: 2N710 Randall Rd., St. Charles  
PHONE: 630-584-8660  
info@kanecfb.com www.kanecfb.com  
OFFICE HOURS: 8:30-4:30 Monday through Friday  
(USPS No. 289700)  
POSTMASTER: Send address changes to Kane County Farmer  
2N710 Randall Rd., St. Charles, IL 60174  
Periodical Postage • Paid to St. Charles, IL 60174  
Year Subscription: \$2.00

---

<p>■ DISTRICT 1 Aurora, Sugar Grove, Big Rock Twnshp. Nan Long 11461 E. County Line Rd. Big Rock, IL 60511 815-693-7214 Donna Lehrer 7S027 Jericho Rd. Big Rock, IL 60511 630-556-3476 William Keck P.O. Box 281 Sugar Grove, IL 60554 (630) 466-4030</p>	<p>Joe White President 47W727 Main St. Rd. Elburn, IL 60119 630-557-2517</p> <p>■ DISTRICT 3 Virgil, Campton, St. Charles Twnshp. Andrew Lenkaitis 6N707 Corron Rd. St. Charles, IL 60175 630-513-9980 Chris Collins 1143 Anderson Elburn, IL 60119 630-934-4642</p>	<p>Mike Kenyon Secretary/Treasurer 1250 E. Main St. South Elgin, IL 60177 847-741-1818</p> <p>Craig Bradley 37W791 Orchard Lane Elgin, IL 60124 847-888-2380</p> <p>■ DISTRICT 5 Hampshire, Rutland, Dundee Twnshp. Joe Engel 516 Sawgrass Ln. Hampshire, IL 60140 847-347-5561</p>
<p>■ DISTRICT 2 Kaneville, Blackberry, Gen./Bat. Twnshp. Bill Collins 1125 Lewis Rd. Geneva, IL 60134 630-484-6852 Karl Kettelkamp 47W407 Main Street Rd. Elburn, IL 60119 630-365-2713</p>	<p>Dale Pitstick 2N118 Pouley Rd. Elburn, IL 60119 630-816-0223</p> <p>■ DISTRICT 4 Burlington, Plato Elgin Twnshp. Beth Gehrke 12N860 US Hwy. 20 Elgin, IL 60124 847-697-2538</p>	<p>Gerald Gaitsch 10613 Brittany Ave. Huntley, IL 60142 847-669-2003</p> <p>Wayne Schneider Vice President 721 Lindsay Lane West Dundee, IL 60118 847-428-0488</p>

## Kane Co. Farm Bureau snapshots Local folks in the KCFB community

Journey Care Hospice Chaplain Dee Clark (r) shares a story with KCFB Manager Steve Arnold as he unboxes an Ertl "Big Farm" International 1206 tractor in the Farm Bureau Country Store. Clark stopped by the Farm Bureau to buy a gift on Veteran's Day for a 90 year old WWII veteran and farmer, who is now a Journey Care patient. Clark frequently buys gifts for patients on special occasions to help evoke memories of their professional or home life. Our world could use more points of light like Dee Clark!



Connie Bergquist of Maple Park pauses in the FB lobby with a classic Farm Bureau gate sign. These 9.5 x 13" gate signs are available in "modern" red and black on a white background for \$35, or "classic" blue and yellow gate for \$45, through the IAA Foundation, the charitable arm of the Illinois Farm Bureau. They come personalized with member or farm name and "member since" date. They make great gifts and can be ordered at [iaafoundation.org](http://iaafoundation.org), or by calling the Kane County Farm Bureau at 630-584-8660.

## Welcome to the next level!

This month we welcome the following KCFB members who joined our organization or reclassified their membership in August to \*Regular or Professional Status:

### Regular members

**Tentinger Landscape  
Maple Park**

### Professional members

**John Blum Elgin  
Tim Kehoe St. Charles**

We remind you of added perks that accompany your new Regular member or Professional Status and thank you for supporting KCFB's efforts at advocacy, education and hunger relief:

- Professional networking opportunities & engagement with farmers
- Agriculture, farm & food news delivered to your door
- New subscription to *FarmWeek*, the largest weekly agriculture newspaper
- Access to FarmWeekNow.com

- KCFB voting rights & ILFB delegate opportunities
  - Continuing subscription to the *Kane County Farmer* newspaper
  - Free annual registration at one of 7 statewide conferences
  - 302,000 member discounts, including Ford, Lincoln, John Deere, Case IH, restaurants, hotels & travel
  - Discounts at the KCFB Country Store on in-house sales of featured local foods
- \*KCFB Regular membership is required of all who join our association that have a vested interest in and receive income from the production of farm products as an owner or operator of a farm business. Professional Membership status is available for all those employed in agriculture-related occupations, even with no farm income. If you are interested in "next level" membership and the benefits it carries, please contact KCFB in St. Charles at (630) 584-8660.*

Save for FREE admission to:  
**Touch-A-Tractor**  
April 17-19, 2020 | St. Charles

## VINTAGE TRUCK RAFFLE

Kane County Farm Bureau FOUNDATION

Proceeds benefit college scholarships, Ag literacy programs & local FFA chapters

**2020 GRAND PRIZE**  
1969 CHEVY C10 PICKUP OR \$3,500 CASH

**\$15 EACH 2/\$25 5/\$50**

Drawing Sunday July 19, 2020, 4H Blue Ribbon Sale, Kane County Fairgrounds, Randall Rd., St. Charles, Illinois.

18 or older to enter. Winner need not be present to win. Winner responsible for all local, state and federal taxes associated with prize chosen.

Name (joint) \_\_\_\_\_ #0000  
Daytime Phone \_\_\_\_\_  
Email \_\_\_\_\_  
Address \_\_\_\_\_  
City \_\_\_\_\_ State \_\_\_\_\_ Zip \_\_\_\_\_  
2020 VINTAGE TRUCK RAFFLE

**Vintage Truck Raffle • KCFB Foundation** (see story on page 1)

Please send me \_\_\_\_\_ tickets (\$15 each, 2 for \$25 or 5 for \$50)

Name \_\_\_\_\_

Address \_\_\_\_\_

City, State, Zip \_\_\_\_\_ Email \_\_\_\_\_ Phone (\_\_\_\_) \_\_\_\_\_

Return with check made payable to Kane County Farm Bureau Foundation,  
2N710 Randall Road, St. Charles, IL 60174 **or** charge my:

Visa  MC # \_\_\_\_\_ Exp \_\_\_\_\_ / \_\_\_\_\_

Signature \_\_\_\_\_ Date \_\_\_\_\_ / \_\_\_\_\_ / \_\_\_\_\_

## Probst 'wins' tractor at 'Dutch' auction

With no convenient winter storage and a decision to focus future Raffle fundraisers for college scholarships and support for ag literacy on vintage pick-up trucks, in November the KCFB Foundation offered its 1956 Massey-Harris Model 333 tractor for sale through a "Dutch" auction. The tractor was acquired in the spring of 2018 at a Mecum "Gone Farmin'" auction in the Quad Cities. It was originally intended as the Grand Prize in the 2019 Winner's

Choice Raffle, but became one of 2 Grand Prize choices when the Foundation later acquired a 1965 Ford 100 pick-up truck. That truck was chosen by the 2019 raffle winner.

Mike Probst of Elburn, a retired Financial Representative with COUNTRY Financial, was the winner of the Dutch auction, purchasing the tractor on November 15. Mike spent his entire career supporting the Farm Bureau and our members through his provision of COUN-

TRY products and services. We are happy that he continues that support still today. Congratulations, Mike ... and THANKS!



Mike Probst

## Touch-A-Tractor set for April 17-19

Kane County Farm Bureau FOUNDATION's 14th annual Touch-A-Tractor will be held Friday - Sunday, April 17-19. We'll bring some farm to the city for this ever-popular event. It could be your first chance to get the kids out of the house this spring!

Kids get to touch and even sit in the seats of big farm machinery they normally only see from the road. They can participate in hands-on activities, ride pedal tractors, frolic in the corn corral, crawl through culverts, bang on pots and pans, play with toy tractors and farm equipment and see farm animals.

Area moms tell us their kids ask them to come back year after year, so be sure to add this event to your 2020 calendar.

Touch-A-Tractor is also the

KCFB FOUNDATION's biggest community event and fundraiser. For 2020, a Vintage Truck Raffle ticket will get FREE family admission all 3 days, all others will pay \$2 (adult) or \$5 (family) admission. Proceeds from Touch-A-Tractor and the Vintage Truck Raffle benefit the college scholarship and agricultural literacy programs of the not-for-profit Kane County Farm Bureau FOUNDATION.

This year, we are looking for tractors or farm equipment of

ANY vintage. If you would like to put a smile on a kid's face, ALL tractors are welcome - the more, the merrier!

If you are interested in volunteering for this family-friendly event, or have tractors or equipment to share, please call the KCFB at 630 584-8660 and ask for Steve or Liz.



## U of I requests data from farmers to better grasp unique growing year

### Project background

When 2019 corn and soybean planting in Illinois stretched into June, and even July in some locations, the commercial agriculture community found ourselves in uncharted territory. We spent considerable time grasping for any information we could find on the potential impact this would have on yield and trying to understand what management changes we should expect because of the drastically delayed planting. While the planting date data we could find was somewhat helpful, we did not have any data that provided insights based a planting season that was delayed into late June.

While it may be tempting to write off this year as a fluke from which there are no real lessons to be learned, we may want to rethink that. What we have is a giant, unplanned, and involuntary experiment that is being conducted by Illinois farmers this year that can help us understand the ramifications of how planting date and variety maturity affect overall yields. We have

an opportunity to collect a small amount of data on a large number of fields, which can provide some idea of what we can do if we find ourselves in this kind of situation again in the future.

### 2019 Delayed Planting Impact Study

#### How you can help

To do this, we have a simple request: Please share your information with us. We are attempting to gather the following information from as many fields as possible.

1. Illinois county where the field is located
2. Crop: corn or soybean
3. Planting date
4. Maturity rating (corn relative maturity (days RM); soybean maturity group)
5. Yield
6. Harvest moisture
7. Information on weather or management can be added, but this is optional.

#### Submit your information

The information can be submitted by completing an online form at [https://illinoisaces.co1.qualtrics.com/jfe/form/SV\\_3k4X13RH8pE84K1](https://illinoisaces.co1.qualtrics.com/jfe/form/SV_3k4X13RH8pE84K1) to report your data one field at a time.

You can submit this form for multiple fields by following the link as many times as you need.

Our goal is to collect all of the data by December 31, 2019. **A Few Notes About Submitted Data**

- We are looking for data across a wide range of planting dates and not just from fields that were planted late. Did you get some fields planted in April prior to all the rain? That information will be just as valuable as the details on fields that were not planted until mid-June.
- If you have yields from strip trials with different hybrids or varieties with different maturities, we can use that but please specify that they are all from the same planting and field.
- If a field has spots that were drowned out and thus have no yield, either do not use the data OR estimate the yield from the yield monitor based on parts of the field that had good stands. Alternatively, you may estimate the percentage of the field that does not have stand/yield and we can use that to estimate the yield.

**TRELLIS**  
FARM & GARDEN

Your local source  
for feed, supplies,  
and so much more!

- Pet Food
- Propane
- Salt
- Delivery

St Charles and Wasco 630-584-2024



**Six Christmas trees help set the holiday mood in our home.**

My husband keeps a different tally, pointing out that our indoor forest calculates to a few dozen evergreens when you count the 12-inch trees atop the kitchen cupboards and the back-

drop to our nativity display. Don't forget the tabletop trees that surround my Christmas barns, nor the set of trees cut from aged barn wood displayed on our bathroom counter. In the kitchen, we decorate a pencil tree with old family cookie cutters, a personal favorite.

I love Christmas trees. In fact, they seem to make all of us happy, so we planted a short-needled evergreen in our front landscaping last year. Their presence and meaning bring together some of our most favorite things. Family time, farm influences and rustic decor intertwine with a Christian holiday, making our hearts and

## Speck receives Teacher Grant for poetry

Kathleen Speck of Fox Meadow Elementary in South Elgin has been awarded a Ag-in-the-Classroom Teacher Grant for Poetry in her classroom.

The mission of the Illinois Agriculture in the Classroom (IAITC) program is to bring accurate and authentic agricultural information to the student in grades PreK-12 across Illinois. "Each year our teacher grant program is very competitive, and our judging panel is amazed at the unique programs teachers use to infuse agriculture into their curriculum. Our book grant winners are ready to jump into units of study highlighting agriculture" said Kevin Daugherty, Director, Illinois Center for Agricultural Engagement and IAITC.

The 2019-2020 Teacher Book Grants are funded in part by The BRANDT Foundation. Karl Barnhart, EVP and Chief Marketing Officer said "Books help tell the story of agriculture, an essential story

that everyone needs to know as we work together to sustainably feed a hungry world. The BRANDT Foundation is proud to be part of this vital effort."

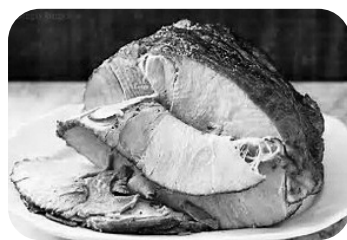
Each year the IAITC program reaches more than 60% of all attendance centers in the state of Illinois. Annual donors include agribusiness partners and event participants with an interest in supporting the future of agriculture. For information on how individuals can contribute, visit [www.iaa.foundation.org](http://www.iaa.foundation.org). For information on IAITC, visit [www.aginthe.classroom.org](http://www.aginthe.classroom.org).



## December Special—Holiday Hams!

The special this month is delicious ham for your holiday dinner. Each ham is individually foil wrapped and boxed, which makes them perfect for holiday entertaining or as gifts. They vary in weight from about 10-12 pounds for traditional (\$3.86 per lb member price) and 7-9 pounds for spiral (\$5.81 per lb member price). PLUS status members always receive a 5% discount on edible foods and monthly specials. Order yours today by sending in the form

below or calling the Kane County Farm Bureau at 630-584-8660 by Wednesday, December 18 at noon. Pick-up is at the Farm Bureau on Monday, December 23.



### Holiday Hams!

Name \_\_\_\_\_  
 Phone: \_\_\_\_\_  
 Email: \_\_\_\_\_  
 Member Number: \_\_\_\_\_

Please indicate quantity:

Traditional	Spiral Slice
Plus Mbr. (\$3.67/lb) _____	Plus Mbr. (\$5.52/lb) _____
Member (\$3.86/lb.) _____	Member (\$5.81/lb.) _____
Non-mbr. (\$4.83/lb) _____	Non-mbr. (\$7.26/lb) _____

DEADLINE FOR ORDERING IS NOON. Wednesday, December 15.  
 Payment is due at pickup at Kane County Farm Bureau (Randall Rd. & Oak St., St. Charles) on Monday afternoon, December 23

minivan radio break into Christmas songs.

This time of year, I most especially enjoy staying home in our tree-filled retreat, anticipating the moments when programmed timers cue the Christmas lights throughout the house. Our family gathers next to the lit living room tree to watch Christmas movies. I fall asleep by tree light in our bedroom. I savor the peace of early morning, rolling out cinnamon rolls before dawn with the glowing Christmas tree.

Consistent with the memories of my childhood, we shop the Christmas tree farm right

after Thanksgiving, connecting with families growing a different crop for a different harvest season. We walk the farm and take a family vote for the best nine-foot fir. This tree, the only real one in our home, bears the gifts, the Christmas star, and the most sentimental ornaments. Five other trees, all six-foot artificials, take on our family's personalities through themes of hunting, fishing, the farm and our alma mater.

My husband should have predicted my obsession for needled trees upon marriage to me, a farmgirl born on Christmas Eve. At our September wedding

reception in the farm shop, guests placed gifts under a 12-foot, fresh-cut pine, a gift itself from the local tree farm.

A few tree tribulations since have tested the marriage. Most notably, my husband tells the story of cutting a board from the unfinished garage wall to improve the "cheap tree stand" he says that I purchased for our first Christmas together. Without elaborating, the story ends well. We've celebrated 17 Christmases since.

About the author: Joanie Stiers' family grows corn, soybeans and hay and raises beef cattle in West-Central Illinois.

## Unique, tasty food products sought

The Kane County Farm Bureau Country Store is in search of cottage food products from members. We are looking for unique items that will add a special flavor to a meal, make the perfect sauce, or are the snacks that you just can't put down!

Please contact us with your non-perishable or shelf-stable items either in person, via e-mail, or give us a call to discuss. Here is our contact information:

**2N710 Randall Rd, St. Charles, IL 60174**  
**info@kanecfb.com**  
**630-584-8660**



Even the biggest goals start with simple steps



- |   |  |  |
|---|--|--|
| <b>Bob Effner</b> , CLF®, LUTCF<br>St. Charles – Elgin<br>Agency Manager<br>St. Charles<br>630-584-0001 | <b>Ashraf Gerges</b><br>Aurora<br>630-898-3750   | <b>Bob Riedel</b><br>West Dundee<br>847-428-5434   |
| <b>Todd Wilcox</b><br>St. Charles<br>630-762-1326   | <b>Bob Kearns</b><br>S. Elgin<br>847-888-3200    | <b>Gary Bolger</b><br>West Dundee<br>847-531-6110  |
| <b>Bobbi Boston</b><br>St. Charles<br>630-485-5155  | <b>Michael O'Brien</b><br>Geneva<br>630-762-0852 | <b>Sherri Schramer</b><br>Elburn<br>630-365-9500   |
| <b>Keith Eakins</b><br>St. Charles<br>630-762-1324  | <b>Mehul Patel</b><br>Geneva<br>630-492-5317     | <b>Dominick Davero</b><br>Elburn<br>630-365-3737   |
| <b>Kelly Landorf</b><br>St. Charles<br>630-762-1328   | <b>John Baine</b><br>Geneva<br>630-492-5324      | <b>Chuck Quick</b><br>Hampshire<br>847-683-2100    |
| <b>Donna Tonovitz</b><br>St. Charles<br>630-549-7694  | <b>Mike Malloy</b><br>Geneva<br>630-492-5290     | <b>David Berreles</b><br>Hampshire<br>847-683-2100 |
| <b>Orazio Difruscolo</b><br>St. Charles<br>630-549-7696   | <b>Victor Alvarado</b><br>Elgin<br>847-742-0003  | <b>Dan Cooper</b><br>Sugar Grove<br>630-466-9600   |
| <b>Edward Stuehm</b><br>Geneva<br>630-845-8245  | <b>Luke Fawkes</b><br>Elgin<br>847-742-0001      | <b>Ted Schuster</b><br>Sugar Grove<br>630-466-9600 |
| <b>Deb Stob</b><br>Geneva<br>630-208-0890   | <b>Sherry Lochen</b><br>Elgin<br>847-742-0001    |  |



# Farm Facts @ Fun

Compiled by KCFB staff



Often referred to as evergreens, Christmas trees include different species of firs, spruces, and pines, all of which stay green year-round. These trees are grown and harvested in 45 different states.

Across the country, over 300,000 acres are dedicated to growing a traditional holiday sight, the Christmas tree. In 2018, more than 32 million Christmas trees were purchased to display in homes and public areas throughout the United States, according to the National Christmas Tree Association. Today, 98% of Christmas trees are grown on farms, and unlike artificial trees made from plastics, real Christmas trees can be recycled to provide benefits to the environment.

A Christmas tree can take up to 15 years to grow to 6 feet tall, so for each tree harvested, Christmas tree farmers plant one to three more seeds. On average, trees are harvested at about seven years old.

*\*Adapted from Illinois Agriculture in the Classroom's "Seasons" Ag Mag.*



## \*\*\*\*\* Christmas Riddles \*\*\*\*\*

- What do elves learn in school? *The elf-abet*
- What is the difference between the Christmas alphabet and the ordinary alphabet?  
*The Christmas alphabet has no L (Noel)*
- What do snowmen eat for breakfast? *Frosted Flakes*
- How do sheep in Mexico say Merry Christmas? *Fleece Navidad*



## Christmas tree history

- \* The first decorated Christmas tree was in Riga, Latvia in 1510.
- \* The first printed reference to Christmas trees appeared in Germany in 1531.
- \* Using small candles to light a Christmas tree dates back to the middle of the 17th century.
- \* Thomas Edison's assistant, Edward Johnson, came up with the idea of electric lights for Christmas trees in 1882. Christmas tree lights were first mass produced in 1890.
- \* In 1900, large stores started to display large, illuminated Christmas trees.
- \* The tradition of an official Chicago Christmas tree began in 1913, when one was first lit by Mayor Carter H. Harrison in Grant Park.
- \* The official Christmas tree tradition at Rockefeller Center began in 1933. Since 2004, the tree has been topped with a 550-pound Swarovski Crystal star. Since 2007, the tree has been lit with 30,000 energy-efficient LED lights, which are powered by solar panels.
- \* Every year since 1947, the people of Oslo, Norway have given a Christmas tree to the city of Westminster, England as an expression of goodwill and gratitude for Britain's help to Norway during World War II.
- \* In 1856, Franklin Pierce, the 14th President of the United States, was the first President to place a Christmas tree in the White House.

President Coolidge started the National Christmas Tree Lighting Ceremony on the White House lawn in 1923.

### Did you know?

- \* In 2012, U.S. farmers planted 46 million Christmas tree seedlings.
- \* 98 percent of all Christmas trees are grown on farms, while only 2 percent are cut from the wild.
- \* More than 2,000 trees are usually planted per acre.
- \* Almost all trees require shearing, or trimming, during their growth to attain the desired Christmas tree shape.

## Decorated trees, holly and mistletoe

### Decorated Christmas Trees

In the early 20th century Americans were inclined to use homemade ornaments. Homemade decorations were mainly used to bedeck the Christmas trees but the German-Americans had continued their old and impressive tradition of adorning the Christmas trees with apples, nuts and marzipan cookies. Popcorn was a new item of decoration along with berries and nuts.

Christmas trees were on display across the country and lights helped trees beam in the dark with the aid of electricity, marking the onset of the Christmas holiday. In the early days, horns and bells were used to scare evil spirits. Before that angels and fairies were used as signs of bringing good luck.

### What is Christmas holly?

Many folks love to drape their doorways and deck their halls with cheerful holly wreaths and garlands. The plant represents peace and joy and people often settle arguments under a holly tree. It was long believed to frighten off witches and protect the home from thunder and lightning. In England, British farmers put sprigs of holly on their beehives. Other beliefs are putting sprigs of holly on the bedpost to bring sweet dreams and making a tonic from holly to cure a cough.

### Mistletoe

- Considered to bestow life and fertility

- Protection against poison
- An aphrodisiac
- Some used to place over house and stable doors to prevent the entrance of witches.
- Kissing under mistletoe was first found in Greek festivals.
- Considered to be a plant of peace

## String of Paper Gingerbread Men and Women

These are great to decorate Christmas trees or string around a room at your holiday gatherings.

### Supplies needed:

- Brown grocery bag or brown/tan construction paper
- Crayons or markers
- Scissors
- Glue, tape, or staples
- A long piece of green or brown yarn or string

### Directions:

1. Draw a gingerbread man or woman on a piece of construction paper. Make sure to draw a rectangle on the top of the head (your gingerbread person will hang from this rectangle, which will be folded over).
2. Cut out the gingerbread people. Draw a face, clothes, etc.
3. Fold the rectangle at the top of the head over.
4. Attach the gingerbread person to a long string using tape, glue, or staples. Make more gingerbread people and attach them to the string. Hang wherever you desire.

## Christmas trees word search

C S L Q R S S M E H E H M Y A K U S I M  
 N D W G H A R O V C M J V Y J I G U L Z  
 E R Y A L G T E U G A R L A N D V G S R  
 I W O G R E I R M F W R E A T H D T C J  
 B V U C L O P N R R G O N G G E K V A W  
 W O B T P S V A G T A S C O T C H P K L  
 D M S O G O S S M E K F O E B S R A K L  
 I I Q B E E P O K Z R F C T G C L W S O  
 M E Y S R N G E S I D B J T W H D W U J  
 E B G R A N I N A E G R R R T P E H Z S  
 H P E D X M O P T S P U W E V C C W Z U  
 V F R U I R T A J K L J M R A B O Q U X  
 C O D P Z L N S L Z N B T L K D R H P A  
 E Q T F D I O O I X M P R H G W A O I I  
 C S Y Y M D K O V R S T W M I N T L E K  
 V A D U Z H I K C U H E R C A D E L R P  
 Z H L W X Y A W R O N C I Y W S D Y C X  
 Q L C R A N B E R R Y F F A Z X L G E S  
 I R A W F G Y A G D U D Z Y T R Q A H X  
 V F Q Z P H M M A I S Y N A M R E G B X

BALSAM  
 CHRISTMAS  
 COOLIDGE  
 CRANBERRY  
 DECORATED  
 DOUGLAS  
 EGGNOG  
 FARMERS  
 FIR  
 FRASER  
 GARLAND  
 GERMANY  
 GINGERBREAD  
 HOLLY  
 ILLUMINATED  
 LATVIA  
 MISTLETOE  
 NORWAY  
 PIERCE  
 PINE  
 POPCORN  
 SCOTCH  
 SPRUCE  
 SWAROVSKI  
 WREATH

## December is ...

### National

- Bingo's Month
- Root Vegetables and Exotic Fruits Month
- Safe Toys and Gifts Month
- Write a Friend Month

### National Food Days in December:

- 1 Eat a Red Apple Day
- 2 Fritters Day
- 8 Brownie Day
- 9 Pastry Day
- 13 Ice Cream Day
- 14 Roast Chestnuts Day
- 16 Chocolate Covered Anything Day
- 17 Maple Syrup Day
- 18 Bake Cookies Day
- 24 Egg Nog Day
- 25 Pumpkin Pie Day
- 27 Fruitcake Day

### Special Days in December:

- 4 Santa's List Day (we hope you're on the "nice" list)!
- 8 International Children's Day
- 9 Christmas Card Day, Hanukkah
- 12 Poinsettia Day
- 13 Violin Day
- 15 Bill of Rights Day
- 19 Look for a Evergreen Day
- 20 Go Caroling Day
- 23 Festivus – for the rest of us
- 25 Christmas
- 28 Card Playing Day
- 31 New Year's Eve

Name \_\_\_\_\_  
 Address \_\_\_\_\_  
 City \_\_\_\_\_ State \_\_\_\_\_ Zip \_\_\_\_\_  
 Telephone (\_\_\_\_) \_\_\_\_\_ Email \_\_\_\_\_ Age \_\_\_\_\_

Return to: Kane County Farm Bureau, 2N710 Randall Road, St. Charles, IL 60174 by December 17, 2019 to be entered in our drawing for a Christmas tree themed prize. Prize must be picked up at the KCFB office.

## Congratulations

Estela Serrato of South Elgin is the November Word Search winner! Her name was chosen from the entries received for correctly completing last month's Word Search Puzzle! For her participation she receives farm themed Christmas decorations/gifts. Thank you, Estela, for reading the Kane County Farmer and continue to watch each month for more great opportunities from the Kane County Farm Bureau.

# IFB counters unfounded criticism with 'Truth About Livestock'

Source: *FB News, AFBF, Nov 2019*

To help better support a livestock industry facing constant and unfair criticism, the Illinois Farm Bureau partnered with several state livestock organizations to create a data-driven campaign showcasing the positive impacts of the state's livestock sector.

"Certain groups in our state took every opportunity to fight proposals to build new livestock facilities and tried to pit neighbor against neighbor through lawsuits. They tried to scare people away from entering the livestock industry and encouraged those already involved to leave," explained Lauren Lurkins, director of environmental policy for the Illinois Farm Bureau.

To combat this, Illinois Farm Bureau joined forces with the Illinois Beef Association, the Illinois Milk Producers' Association and the Illinois

Pork Producers Association to delve into the sector's impact on the environment, sustainability and other factors important to all Illinoisans.

Key to this effort was gathering as much data as possible from the numerous agencies that oversee the various elements and stages of livestock farming including the Illinois Department of Agriculture, Illinois Environmental Protection Agency, Illinois Department of Natural Resources, the Illinois Department of Public Health, USDA's Natural Resources Conservation Service and the U.S. EPA.

Based on this and other research, the groups produced a report, hard copy and digital, and launched a "Truth About Livestock," campaign in late 2018 based on the four most

important truths they surfaced:

- Truth #1: Environmental Issues are Uncommon on Illinois Livestock Farms
- Truth #2: Illinois Livestock Farms are Environmentally Sustainable
- Truth #3: Livestock Farms are Economic Engines for Illinois
- Truth #4: Livestock Farms Create Opportunities to Bring the Next Generation Back to Illinois' Rural Communities

IFB first rolled out the report and campaign internally.

"We started with our membership. We made sure we engaged our leadership" Lurkins explained. The campaign was also used to promote what Illinois Farm Bureau does for its members.

The campaign "brought a lot of energy and visibility. It also helped a tremendous amount for

us to be seen collaborating with state livestock groups to advocate as a whole for livestock farmers in the state," she said.

After a thorough presentation of the campaign details at their annual summer gathering of county Farm Bureau presidents, Farm Bureau formally kicked off the campaign with a press event on Ag Day at the state fair in August 2018.

Following the media event, which garnered a decent amount of attention from ag and mainstream outlets, the political side of the campaign swung into full gear. Working off of their already established relationships with state and national lawmakers, as well as candidates, Illinois Farm Bureau opened the campaign to policymakers.

"We also made sure the county Farm Bureaus had a toolkit that included all the marketing and promotional materials they may need to share with their county governments,"

Lurkins said.

The final aspect of the campaign was social media, with a big push right after the August Ag Day media event. IFB kept the campaign momentum going through the end of 2018 by revealing one truth at a time. From August to December 2018, almost half a million people had seen Illinois Farm Bureau's Facebook posts at least four times.

The Truth About Livestock landing page, part of the Illinois Farm Bureau website, allows visitors to explore other aspects of the organization and provides ways for IFB members to get more involved.

The Truth About Livestock garnered Illinois Farm Bureau a 2019 New Horizon Award from the American Farm Bureau Federation. The award, which honors state Farm Bureaus with the most innovative new programs, is presented annually at the AFBF Annual Convention.

that resides in the state of Illinois. Local AGCO Parts division employees in Batavia raise funds to support this scholarship effort.

### AGCO Platinum Scholarship (1)

A \$2,500 college scholarship for a currently enrolled college sophomore, junior or senior applicant pursuing a degree in agricultural related career field that resides in the state of Illinois. Funds provided by special activities and projects carried out by our friends at AGCO Parts in Batavia.

### General Scholarship (1)

To be eligible for the \$1,000 Kane County Farm Bureau general scholarship, the member or dependent must have been a member in good standing since February 1, 2018, and pursuing higher education for a career in ANY field.

### Ruth & Frank Carlson Scholarship (1)

Will provide a \$1,500 college scholarship annually to a student studying at Waubensee Community College, Elgin Community College or ANY college or University in the state of Minnesota. The scholarship will seek to promote a next generation agricultural communicator.

For more information on FOUNDATION scholarship programs, call Kane County Farm Bureau at 630-584-8660. Application deadline is February 15, 2020.

## Scholarships

(continued from page 1) both of Hampshire, dealers and distributors of John Deere farm equipment and golf course maintenance equipment, respectively. Late in 2001, the family of John Buck established the John Buck Memorial Scholarship for agriculture students through the Kane County Farm Bureau Foundation.

### Chuck Swanson Memorial Scholarship (1)

The Chuck Swanson Memorial Scholarship was established by the family and friends of the former Farm Bureau Director and long-time volunteer to provide an annual award for a student residing in Kane County pursuing a degree in an agriculture-related career field.

### AGCO Global Women's Network (AGWN) Scholarships (2)

Provides two (2) \$1000 college scholarships annually to a woman pursuing a degree in agricultural related career field that resides in the state of Illinois. AGCOGWN scholarships are supported by members of the local chapter at AGCO Parts in Batavia.

### AGCO Parts Division Scholarships (2)

Provides two (2) \$1000 college scholarship annually to a student pursuing a degree in agricultural related career field

**Kane County Farm Bureau FOUNDATION**  
Educational & Community Service Programs

I want to help support:

<input type="checkbox"/> Foundation Scholarships	<input type="checkbox"/> Ag Days	<input type="checkbox"/> Ag Literacy Library
<input type="checkbox"/> FFA Chapter Grants	<input type="checkbox"/> Sprouts	<input type="checkbox"/> Touch-A-Tractor
<input type="checkbox"/> Other (indicated here) _____		

Please make this a recurring monthly gift  
(your credit card will be billed this amount each month)

Please accept my donation in the amount of:  \$25  \$50  \$75  \$100  
\$ \_\_\_\_\_ Surprise us!

Name \_\_\_\_\_

Address \_\_\_\_\_

City \_\_\_\_\_ State \_\_\_\_\_ Zip \_\_\_\_\_

Phone (\_\_\_\_\_) \_\_\_\_\_

Email \_\_\_\_\_

Enclosed is my donation of \$ \_\_\_\_\_

Please charge my donation to my:

Visa  MC  Discover


Name (as it appears on card) \_\_\_\_\_

Card number \_\_\_\_\_

Exp: \_\_\_\_ / \_\_\_\_ Security Code \_\_\_\_\_

Signature \_\_\_\_\_

**Kane County Farm Bureau Foundation**  
By phone at 630-584-8660  
2N710 Randall Rd., St Charles, IL 60174



**Kane County Farm Bureau**  
**FOUNDATION**  
for the future of farms & food

For information on other ways to support the work of our not-for-profit Foundation, establish a memorial scholarship, honor a loved one, or establish a new agricultural or community service program effort, contact Steve Arnold, Executive Director at 630-584-8660 or [steve@kanecfb.com](mailto:steve@kanecfb.com).

## Nominations sought for KCFB Director

The Kane County Farm Bureau is seeking eligible candidates for election to the association's Board of Directors. A Farm Bureau director is an individual who helps provide governance, set policies, and supports the philosophy and actions of the organization. Directors should be willing to dedicate time to make a difference in agriculture and to provide direction, inspiration, and motivation to the largest, most influential and effective farm related organization in Kane County.

Eligible candidates are regular members (farmers and farmland owners) residing in Kane County.

Five directors will be elected, by ballots mailed in March, to regular members in each respective District. KCFB has five districts each made up of three townships.

To suggest potential candidates for election, members should call 630-584-8660 by

January 15, or fill out the form below.

**TO: Nominating Committee, Kane County Farm Bureau**  
2N710 Randall Road, St. Charles, IL 60174

Name (please print) \_\_\_\_\_

Mailing Address \_\_\_\_\_

City, State, Zip \_\_\_\_\_

Township \_\_\_\_\_ District # \_\_\_\_\_

Telephone (\_\_\_\_\_) \_\_\_\_\_

Signature \_\_\_\_\_

Membership # (if known) \_\_\_\_\_

Form completed and returned by:

Name \_\_\_\_\_

Mail to this form to: Kane County Farm Bureau,  
2N710 Randall Road, St. Charles, IL 60174  
Return on or before January 15, 2020  
The Nominating Committee will evaluate candidates  
and propose a slate to run for director.



**Recycle**

**Scrap for CASH**

Steel, Copper, Aluminum & Cars

**Trucking & Dumpster Service Available**

*"Helping to keep America Picked up for 45 years"*

**Zimmerman Recycling, Inc.**  
301 Industrial Drive, DeKalb  
(815) 756.8600

# What's new in the COUNTRY agencies?

## St. Charles Agency, Bob Effner, Agency Manager

DONNA TONOVITZ has been named the Financial Representative of the Month for October 2019 in the St. Charles/Elgin Agency, as announced by Agency Manager, Robert J. Effner, Sr., CLF®, LUTCF. Donna has provided tangible plans for addressing the immediate and long term insurance and financial security needs of her clients through COUNTRY Financial's diverse products and services: Auto, Farm, Home, Life/Disability/Health/Annuities/Long Term Care, Retirement Planning, Business and Investments. Let Donna's expertise help you! You may contact Donna at her NEW OFFICE, 1750 E. Main St., Unit 90, St. Charles, or by

phone/email/website: 630-549-7694, donna.tonovitz@countryfinancial, countryfinancial.com/donna.tonovitz. Congratulations, Donna!

## Aurora Agency, Kevin Gomes, Agency Manager

Lulu Medina, Financial Representative with the Aurora Agency, is our Financial Representative of the Month for October 2019. Lulu began her career with COUNTRY Financial in January of 2017 and services clients out of her office located at: 1161 Oak Street, North Aurora, 60542, (630) 449-0910. Lulu's professionalism and vast knowledge of auto, home, life, and commercial products make her a great person to do business with. Congratulations, Lulu!

## Recruiter of the Month

Each month we honor the person who signs the most members into our organization. This month, the honor goes to Felipe Rocha! Felipe has been a COUNTRY Financial Representative since August of 2011. His office is located at 541 N. Lake St., Aurora and he

may be reached at: 630-897-7746. Thank you for your continued support of the Kane County Farm Bureau and congratulations on your success!



Felipe Rocha

Farm Bureau member David Bierman of Maple Park was one of the first to respond to our November advertisement of collectible farm toys in the Kane County Farmer. Thanks to his prompt action, he got first pick and took home four items for his collection, including a McCormick flare box wagon.

Our selection is dwindling, get here fast!



## CLASSIFIED ADS

**CLASSIFIED AD RATES**  
Classified advertising rates: 20 cents per word/\$20 minimum (60 words or less). **DISCOUNTS** for members: Associate members, 20%; Voting members, 30%; PLUS members, 40%. Advance payment requested. Ads due by the 15th of every month for the next issue. No advertising (classified or display) for financial or insurance services will be accepted. Call 630-584-8660.

**SERVICES**  
Jim Verhaeghe & Sons, Inc. – Tree removal, tree trimming, & stump grinding. Backhoe work & Tile Lines. Fully insured – Free Estimates – Jim Verhaeghe Sr. Call: 847 334 5730

**WANTED**  
Want to buy vintage & used tools – Also, we do cleanouts. Call Chris: 630 550 7182

**FREE**  
Dry bulk rice & soybean product mix from a local hunger relief organization, suitable for livestock feed. Approximately 1500# per month. For pick-up in Schaumburg area. Call 630-665-5707 for more info.



**Lucky's ENERGY SERVICE**

We offer wet hosing, bulk tank fills and package lubricants – D.E.F, Oil, Hydraulic, Diesel and Gas for all your needs.

We are a 24/7 Fuel Supplier servicing Illinois – Wisconsin – Indiana  
Call us today at 847-994-3010 or visit us online at [www.luckysenergy.com](http://www.luckysenergy.com)  
Growing To Serve You Better

# Illinois Farm Bureau to co-host launch of state Farmer Veteran Coalition

Military veterans across the state who wish to pursue a career in food, farming and agriculture have new opportunities to advance their careers through the establishment of a statewide coalition.

The Farmer Veteran Coalition of Illinois is the 10th chapter of a national nonprofit organization that cultivates a new generation of farmers and food leaders and develops viable employment and meaningful careers through the collaboration of the farming and

military communities. A press conference will be held to formally launch the program on Saturday, December 7, 2019. The program will begin at 10 a.m. in the Grant Park Parlor on the sixth floor of the Palmer House Hotel in Chicago. It will take place during the Illinois Farm Bureau Annual Meeting. Presentations during the program will include:

- The connection between state coalitions and the national organization, as explained by Farmer Veterans Coalition

- founder Michael O'Gorman;
- Coalition goals and hopes for the future;
- Farmer veteran stories and testimonials;
- Information on the statewide Homegrown By Heroes program;
- Recognition the Illinois Farmer Veteran Coalition Board of Directors and Advisory Board.

A micro talk will follow at noon on the sixth floor of the Palmer House Hotel.

## Ag women seek more leadership roles

A November survey revealed 75% of respondents are leaders at the local level, 50% are leaders at the state level and 26% are leaders at the national level.

Women serve as active advocates for agriculture and successful business owners interested in filling leadership roles, according to a new American Farm Bureau Federation survey.

A majority of those surveyed, 91%, also believe there should be more women in leadership

roles in the industry. More than 3,000 women completed the informal survey online, which was conducted to determine the goals and achievements of women in agriculture.

"Women play a vital role in modern farming and ranching," said Sherry Saylor, an Arizona farmer and chair of the AFBF Women's Leadership Committee. "We hope to use the survey results to drive our program of work, and to give women their

voice and help them make even more of an impact in their communities."

More than 50% of women surveyed have started their own business that's still in operation; 25% have not started a business but indicated they would like to do so in the future. Respondents cited prioritizing and finding time to accomplish tasks, acquiring financial support and marketing plan development as their top business challenges.

## KCFB Foundation offers unique gifts for Christmas

They're going fast, but the KCFB Foundation still has unique, highly collectible farm toys in our inventory. A gift from Rodney Oxe, formerly of Batavia, the toys were offered for sale by the Foundation to Farm Bureau members for Christmas gift giving last

month. All sales will benefit KCFB Foundation Scholarship and Ag Literacy programs.

Most of the remaining inventory is Farmall Precision and Precision Key Mint collectibles. All are available at our office in St. Charles at the prices listed below. The Farm Bureau will

honor the 10% PLUS member discount on all of these toys. If you are not already a PLUS member, call 630-584-8660 to learn more about the additional discounts and savings this membership status provides – including discounts on collectible farm toys!

### COLLECTIBLE FARM TOY TRACTORS

Item	Scale	Make	Model	Additional info.	Series	Boxed?	Price
14552	1/16	Farmall	H	w/ mounted planter	PrecisionKey series 5	SOLD	\$140.00
14276	1/16	Farmall	560 Diesel	Precision series 10		SOLD	\$140.00
14007	1/16	Farmall	400	Precision series 13		SOLD	\$100.00
4355	1/16	Farmall	460	Precision series 11		Y	\$100.00
55149	1/50	CAT	432E	Side Shift Backhoe loader	Norscot	Y	\$40.00
4284	1/16	Case	930	Comfort King	Precision series	Y	\$80.00
14635A	1/16	International	1456	Wheatland		Y	\$195.00
14530	1/16	Farmall	806	PrecisionKey series 4		SOLD	\$120.00
14204	1/16	IH	1466	Precision series 18		Y	\$120.00
14128	1/16	McCormick		Flare Box Wagon	Precision series 17	SOLD	\$45.00
14060	1/16	Farmall	560	w/ 2-MH Corn Picker	Precision series 14	Y	\$195.00
14275	1/16	FarmallMV	High Clear	Precision series 20		Y	\$83.00
14129	1/16	Farmall	706	Precision series 16		Y	\$150.00
4599	1/16	Farmall	MD	w/ loader	Precision series 10	Y	\$95.00
16165A	1/16	Farmall	Super M	w/ 2-MH Corn Picker		Y	\$75.00
14408	1/16	Farmall	1206		PrecisionKey series 1	Y	\$150.00
14350	1/16	International	3588		PrecisionKey series 2	Y	\$150.00
14102	1/32	Case IH	STX450		Series II Precision	Y	\$100.00
14634	1/16	International	6588		PrecisionKey series 7	Y	\$75.00
56018	1/32	Lexion	590R	Combine	Norscot	Y	\$80.00
14481	1/16	International	1468		PrecisionKey series 3	Y	\$125.00
	1/16	FarmallIM	Demonstrator	color, white		SOLD	\$50.00
		Farmall	Super M			SOLD	\$20.00
#0992		Farmall	450	Narrow front	02 Red Power Roundup	SOLD	\$40.00
1413		Farmall	450	Wide front		SOLD	\$40.00
1204		Farmall	450	Wide front		SOLD	\$40.00
		Farmall	Super M-TA	Wide front	(plastic)	N	\$26.00
	1/12	Farmall	H		Franklin Mint	SOLD	\$43.00
	1/12	OliverSuper	99 Diesel		Franklin Mint	N	\$180.00
	1/12	Farmall	F-20		Franklin Mint	SOLD	\$30.00
		Farmall	M			SOLD	\$30.00
	1/12	Farmall	A		Franklin Mint	SOLD	\$85.00
3078	1/50	CAT	980G	Wheel loader	Norscot	SOLD	\$25.00
3078	1/50	CAT	D11R	Dozer	Norscot	SOLD	\$25.00
#0852	1/64	Farmall	400	Wide front		N	\$50.00
3165	1/50	CAT	365B	Trackhoe	Norscot	SOLD	\$40.00
4567-1HEA		Farmall	M Series 2	M-Wide; M-Narrow: Super MV HC	Desk set	Y	\$30.00
4542-1HEA		Farmall	M Series 4	M-Demo; Millionth M; M Prototype	Desk set	SOLD	\$30.00



# Honey, it's time to stuff the stockings!

Christmas is coming whether you're ready or not, so why not get a jump on stocking up on stocking stuffers? The Kane County Farm Bureau is featuring a collection of "the perfect stocking stuffers" for the people who have made it onto your "nice" list.

Mini-honey bears from White Farms in Elburn are priced at \$2.50 for a 2oz jar or buy 2 jars for \$4. These little bears of sweetness will be a hit come Christmas morning. Honey is the natural sweetener that everyone loves and has many healing properties as well. \$1 from each mini-honey bear sale will benefit the KCFB FOUNDATION.

Besides mini-honey bears, we have a collection of local Illinois treats including Slap You Silly hot sauce (\$6.50 any size/ flavor), Rollicking Buckaroo Pepper Jam (\$7), Happy Bee

Soaps (\$6), Teeple Barn collectible coffee mugs (\$5), Pilot Knob blue or red "hull-less" popcorn (\$2), and the ever popular Pork BBQ Spice (\$9.50) & Bean's Farm Grilling Dust & Seasoning.

If you're looking for stocking stuffers for the younger crowd, we also have plenty of mini-tractors, trucks, ATV's, and various farm animals from TOMY.

Whatever your holiday needs, the Kane County Farm Bureau's Country Store has something for everyone. Stop in and visit us Mon-Fri, 8:30am-4:30pm @ 2N710 Randall Rd., cross street is Oak in St. Charles.



## Thanks to our Donors...



The KCFB FOUNDATION offers its sincere appreciation to the following for their contributions to our community service, education, and scholarship and hunger relief programs. Names shown are pledges received from October 16 through November 15.

Donor	Beneficiary
IFB Young Leaders Committee	Harvest for ALL
Konen Family Foundation	KCFB Foundation SPROUTS

\*SPROUTS is an agricultural reading program for Kane County 3rd grade classrooms. Through SPROUTS, volunteers visit local classrooms each April, read farm-themed books and leave books to build farm friendly school libraries. It also provides book donations to local public libraries during National Library Week. The program was established in memory of long time Farm Bureau volunteers Bob and Alyce Konen of Aurora. To volunteer to read to a class, or to support the effort, contact Amy Cook, Ag Literacy Coordinator, at 630-584-8660.

**Several Kane County Farm Bureau member farms and businesses offer Christmas Trees and some offer wreaths and roping/garland. These locations include:**

- Heinz Brothers Greenhouse – St. Charles**  
630-377-6288
- Klein's Farm & Garden Market – Udina**  
847-697-4910
- Kuipers Family Farm – Maple Park • 815-827-5200**
- Lee's Trees – Lily Lake • 630-365-2116**
- Spring Bluff Nursery – Sugar Grove • 630-466-4278**
- Randy's Vegetables – Sleepy Hollow (Dundee)**  
\*Heiden's Christmas Trees  
906-280-1897
- Theis Farm Market & Greenhouses – Maple Park**  
815-985-8001
- Tom's Farm Market & Greenhouse – Huntley**  
847-669-3421
- Trellis Farm & Garden – St. Charles**  
630-584-2024

# FB ACT–Act today, win tomorrow

## Be an advocate for Farms and Food, text FARM to 52886

FB ACT is a tool for Farm Bureau members to drive policy agendas, focused on agriculture, and respond to the continuous threats posed by other interest groups and elected officials who don't share our same interests. As a member of Kane County Farm Bureau, you have the voice and strength to stand up

for farms, food, and our future.  
**How to Join FB ACT:**

- Text FARM to 52886
- Visit the IFB App
- Enter www.ilfb.org/fbact into your browser
- Contact us at 630-584-8660

**Ways to Receive IFB Action Requests:**

- Open a text from FB ACT

that alerts you to contact your targeted officials

- Receive a direct email from FB ACT the minute IFB needs you to act
- Pick up a call from the IFB President laying out what action IFB needs from you

## Save time and renew online!

It's easy to make sure your Farm Bureau Membership is current. The Illinois Farm Bureau provides many services to all Kane County Farm Bureau members, for example, online membership renewal through their website.

Did you know you can renew your Farm Bureau membership online? You can also view your payment history, print a lost or

updated membership card, and update your account information including address, spouse/dependents, phone and e-mail all through the Member Center of the website.

To do this, simply visit www.ilfb.org. Click on the Membership tab at the top, and then Renew your membership. You will be asked to register using your Farm Bureau num-

ber and to create a username and password.

The ability to check your membership information anytime, anywhere can help prevent unwanted Farm Bureau membership late fees and keep you eligible for COUNTRY Mutual and COUNTRY Preferred insurance coverages. Don't delay, check to make sure your information is updated today!

# 2020 CDL Random Drug/Alcohol Testing Pool set to begin

Kane County Farm Bureau is renewing the Random Drug/Alcohol Testing Pool for individuals or businesses with Commercial Driver's Licenses to comply with Federal Highway Department of Transportation regulations.

If you have a commercial driver's license, you are under the Federal Highway Department of Transportation regulations for drug and alcohol testing. Owner/operators and small companies with drivers must join an existing consortium for the random testing. Farmer and certain family members have been exempted in certain instances.

Each person who has a CDL will be required to pay a \$125.00 or \$145.00 for on-farm testing consortium fee for fixed or location testing to be includ-

ed in the pool. We also require each person in the pool be a member of the Farm Bureau. (Farmer memberships are \$37.00/year and Associate Memberships are \$20.00/year). The program will run from Jan. 1, 2020 – Dec. 31, 2020.

The consortium fee covers the setup fee and random drug and/or alcohol tests during the year no matter how often your name is drawn. We will also provide one free supervisor training manual. If your name is not pulled, you will not receive a refund on pool money. A special feature of the Kane County Farm Bureau pool is a mobile unit that provides on-site testing. This mobile unit, with certified testing equipment and specialists, will add convenience and time saving elements to the overall program.

Foley Carrier Services, the management company that we have contracted to provide consortium services, provides other services in relation to the regulations. However, the consortium fee does not cover any of the non-random expenses.

**To participate in the 2020 consortium, complete the enrollment application and mail a check for \$125.00 or \$145.00 payable to the Kane County Farm Bureau by Dec. 28, 2019. Please renew your Farm Bureau membership if you have not done so. We must have your renewal payment as soon as possible to continue the random selection process.**

For more information about the CDL pool, please call Kane County Farm Bureau at 630-584-8660.

**2020 Kane County Farm Bureau Random Drug and Alcohol Testing Program Consortium Enrollment Application**

Name \_\_\_\_\_

Address \_\_\_\_\_

City, State, Zip \_\_\_\_\_

Farm Bureau Number \_\_\_\_\_

Phone (\_\_\_\_\_) \_\_\_\_\_ Mobile (\_\_\_\_\_) \_\_\_\_\_

Business Name \_\_\_\_\_

For Setup Location \_\_\_\_\_

Location \_\_\_\_\_

Prescription Medicine Name/Names \_\_\_\_\_

\_\_\_\_\_

Social Security No. \_\_\_\_\_ CDL License No. \_\_\_\_\_

Pool participation price: \$125 per driver for fixed location testing, \$145 per driver for on-site testing. All pool participants must be an "MM", "PM" or "A" member of the Kane County Farm Bureau. The program runs Jan. 1, 2020 to Dec. 31, 2020.

Make checks payable to: Kane County Farm Bureau and return by December 28, 2019.  
Drop off check and application or mail to:  
Kane County Farm Bureau  
2N710 Randall Road, St. Charles, IL 60174

I understand that the fee includes my name in the Kane County Farm Bureau pool to cover the random drug and alcohol testing requirement including the setup fee and the random alcohol confirmation test as mandated by the U. S. Department of Transportation. I further understand that non-random tests such as reasonable suspicion return to work follow-ups, missed appointments, after-hours charges, and post-accidents tests are not covered by the pool money and those charges will be my responsibility.

Date \_\_\_\_\_ Signature \_\_\_\_\_