

Kane County Farmer



**KANE COUNTY
FARM BUREAU®**
Farm. Family. Food.™

Enhance the quality of life for member families;
Promote agriculture, farms & food; and,
Advocate good stewardship of our land and resources.

VOL. 82 NO. 1 JANUARY 2017

KCFB receives numerous awards at IFB Annual Meeting

The Kane County Farm Bureau was recognized for its achievements during the annual meeting of the Illinois Farm Bureau held in Chicago December 3-7, 2016.

As part of its Annual Meeting, Illinois Farm Bureau presents program and committee awards in recognition of outstanding county Farm Bureau volunteer efforts throughout the year. A member of Membership Group V, County Farm Bureaus with 5,516 and more members, Kane County received Gold program awards in the areas of: Membership Quota Commodities & Marketing Health & Safety Local Affairs Policy Development; Silver awards in Ag Literacy Legislative/Political Process Communication & Promotion, and a Bronze award in Member Relations.

The Young Farmers Committee received a Gold award for Committee Excellence, and a Most Outstanding Project award. The KCFB Foundation was also selected a winner of the Gold Star award. The Women's Committee received a Silver Star recognition for its work and the Kane CFB was recognized with a Silver Star for "Multi-County" Projects. The Harvest "Leadership Picnic" received the most outstanding project award in the Legislative/Political Process category.

For the thirteenth consecutive year, the Young Farmers ranked first in their membership group in terms of the overall

amount of funds, volunteer hours and food collected for the state's Harvest for ALL hunger relief effort. Outgoing Committee Chair Heather Pierson accepted the award on behalf of the Committee.

Convention-goers enjoyed seminars and educational micro-talks on topics ranging from the Illinois nutrient loss reduction strategy to working through the challenges of farm succession planning. The meeting also featured an

exhibit hall, ice cream social, silent and live auctions, trivia

night fundraiser, keynote speaker and the annual session of the

organization's Voting Delegate to establish public policies on issues of local, state and national importance to Illinois farmers.

The Illinois Farm Bureau is a member of the American Farm Bureau Federation, a national organization of farmers and ranchers. Founded in 1916, IFB is a non-profit, membership organization controlled by farmers who join through their county Farm Bureau.

Kane County Farm Bureau President Joe White accepts a recognition plaque awarded to the Bureau for its achievements during 2016. The award was presented during the Illinois Farm Bureau Annual Meeting and calls attention to the comprehensive nature of county Farm Bureau programs.



Delegates OK new professional voting membership

At their Annual Meeting in Chicago, Illinois Farm Bureau delegates approved a bylaw amendment that allows nonfarmer members to vote. With fewer farmers in the state each year, the decision to expand the eligible voting members seemed to make sense.

The bylaw change, submitted by nine counties, creates a new membership class called "professional voting members," which covers people working in ag-related jobs. Currently, voting membership remains limited to farmers with at least \$2,500 in annual farm income.

After debate, delegates cast their weighted votes by paper ballot based on the number of members represented. The vote was 56,052 to 20,234. The measure needed 50,858 votes to pass.

Illinois Farm Bureau

President Richard Guebert Jr. said the bylaw change will benefit the organization and help keep young people involved in agriculture.

"We've seen a number of young people who are involved in FFA and 4-H go onto college to join the collegiate Farm Bureau chapters, but once they graduate and get into the real world, then what are their opportunities? They can be involved in Young Leaders, but once they turn 35, they are out of that," Guebert said. "This provides them an opportunity to grow in their leadership skills and be engaged in Farm Bureau."

The change goes into effect April 1.

The proposal stems from IFB's Future of the Organization effort. Delegates received a final report, contain-

ing 25 recommendations, during the Annual Meeting. Last year, delegates approved a Sense of the Delegate Body resolution that called on IFB's Board of Directors to recommend bylaw changes that would allow nonfarmer members who support agriculture to have voting rights.

Moultrie, Bureau, Cass-Morgan, Douglas, Effingham, Henry, Kendall, Macon and Mason County Farm Bureaus submitted the amendment.

"A hundred years ago, there were 250,000 farms when Farm Bureau was created," said Andy Shissler, Mason County Farm Bureau president. "Our forefathers could not have predicted today there would be only 73,000 farms. We're running out of farmers. There aren't going to be any more. We're too inventive."

"It's a positive thing for us as farmers to be good at what we do. But we do need more members to support this Farm Bureau. Ag professionals would help keep this Farm Bureau viable."

Opponents voiced concerns

about potential conflicts of interest between farmer members and ag-related members. "It's a tough business," said John Sedlacek, a Madison County delegate. "If I want someone speaking on my best interests, it better be a farmer."

Under the amendment, only one professional voting member can serve as a delegate from each county, and professional voting members would not be able to hold office in the association. However, county Farm Bureaus may choose whether to allow professional voting members to serve as officers and directors at the county level.

The Kane CFB Board of Directors will discuss the proper role in governance of the association for the newly created "professional membership class" over the next several months. Proposed changes in our County Farm Bureau bylaws will be reviewed by the organization's Policy & Procedures committee, chaired by Craig Bradley of Elgin, with a goal of having bylaw changes presented at the April 2017 meeting.

DATES TO REMEMBER

January

- January 2**
Office closed for holiday
- January 5**
Board of Directors, 7pm
- January 6-11**
AFBF Annual Mtg., Phoenix, AZ
- January 11-13**
Illinois Specialty Crops & Agritourism Conference, Springfield, IL
- January 23**
KCFB Foundation Board, 8:30 am
- January 26**
Young Farmers/FFA Acquaintance Program, No. IL Food Bank, 5pm
- January 27-29**
IFB Young Leaders Conference, East Peoria



Gray-Urban Farms is co-owned by (left to right) Linda & Gordy Gray and Linda & Bob Urban. They recently picked up their Harvest for ALL sign for their farm property. Donors with



cumulative donations of \$500 or more are eligible to receive a new Harvest for ALL sign to proudly display. 2016 program donors who have filled their pledges can pick up a new sign at the Farm Bureau Office.

January Featured Product Pork Roast

The special this month is 3 individually wrapped, 24 ounce boneless pork roasts cut from the tenderest part of the pork loin. They are designed to be cooked just like beef to an internal temperature of 145°F, sliced thin and used as an entrée. Each roast is netted together and vacuum sealed to preserve the lemon-rosemary marinade. This special is offered for \$19 to Farm Bureau Members, \$17 to Plus Members, and \$23 to non-members.

Nominations sought for KCFB Director

The Kane County Farm Bureau is seeking eligible candidates for election to the association's Board of Directors. A Farm Bureau director is an individual who helps provide governance, set policies, and supports the philosophy and actions of the organization. Directors should be willing to dedicate time to make a difference in agriculture and to provide direction, inspiration, and motivation to the largest, most influential and effective farm related organization in Kane County.

Eligible candidates are "MM" members (farmers and farmland owners) residing in Kane County.

Five directors will be elected, by ballots mailed in March, to MM members in each respective District. KCFB has five districts each made up of three townships.

To suggest potential candidates for election, members should call 630-584-8660 by February 15, or fill out the form on page 3.

KCFB Board Review

December 2016

The December meeting of the Kane County Farm Bureau Board of Directors was called to order December 1 2016 at 7:30 p.m. by Joe White, President, in the conference room of the KCFB.

President White gave his presentation starting with a report from the IFB Resolution Committee and November 21 District 1 Resolution review meeting. He reviewed the 4 new proposed IAA bylaws for consideration at December's Annual Meeting, and correspondence, including a Moultrie CFB letter which asked for support of the proposed "Professional Membership" for members working in agriculture related jobs. The Board voted to encourage Kane County voting delegates to support passage of the proposed bylaw amendment for professional memberships.

Manager Steve Arnold delivered a report on IFB & Statewide Issues, Activities, and Policies. The first topic of discussion was the IAA Annual meeting on December 3-6 at the

Palmer House in Chicago. This discussion included Kane CFB awards, Young Farmer Awards, A.M. materials, Micro Sessions, the expense form deadline (12/25) and scheduled attendees.

B. Collins gave the PR & Membership report. He informed the board on contributions to the KCFB Foundation during the previous month including: Harvest for ALL contributions by: Gray Urban Farms to Burlington/Hampshire Food Pantry; Lenkaitis Holsteins & Jaynes Family, to Northern Illinois Food Bank; Dale & Linda Drendel to Northern Illinois Food Bank - Milk 2 My Plate; Ryan & Juanita Klassy to Food for Greater Elgin; Jon DeRaedt Grain Farm to Burlington/Hampshire Food Pantry and CHS Elburn to Elburn Food Pantry.

In Government Affairs, Wayne Schneider started off his report with a review of the Victory Mixer on November 21 at Pitstick Farms farm shop. Public officials and Legislators appreciated the open discussion with no agenda. He informed the

Board that KCFB's proposed project for the Nutrient Stewardship Grant was not selected for funding from IFB. The Government Affairs committee will meet in Dec/Jan to review and discuss the Victory Mixer, Shopping Spree (tentative date and contestants) & Lunches to Legislators (tentative dates).

A written AITC report from Suzi Myers was circulated and the board received updates from the Young Farmers Committee. This update informed the board that Sara Lenkaitis would participate in the IAA Annual Meeting Discussion Meet, and Heather Pierson would accept the Harvest for ALL and Most Outstanding YF Project Awards. Finally the board was informed that Wayne Gehrke was elected new Chairman, Carolyn Gehrke was elected new secretary and reminded that the YF/FFA Acquaintance program is set for January 26th at NIFB.

The meeting concluded with a Manager's Report from Arnold. He spoke about an Election Day farm visit from an Irish Agri-Journalist, Eion

Lowry, editor of Agri-Business Irish Farmers Journal. Arnold reminded directors to turn in their 31 Days of Christmas raffle tickets. He also informed the board that Winner's Choice

Tractor Raffle tickets will be for sale next month. The next scheduled Kane County Farm Bureau Board of Directors meeting will be held Thursday, January 5 at 7:30pm.

15th annual Shopping Spree to be held in Feb.

KCFB's 15th annual shopping spree, where public officials race to collect food for local food pantries, will be held next month. Legislative and Public Relations Committee volunteers are making arrangements with potential contestants and hope to hold the event at the Batavia Jewel-Osco, host for the first 14 such events.

The public will be invited to come watch the two local public officials chosen by the Committees as they race to collect food to help restock the shelves of two area food pantries.

Food Check-Out Week teaches Americans how to stretch their grocery dollars with healthy, nutritious food. Typically, consumers spend just 10 percent of their disposable annual income on food. This

low number is thanks to the efficient efforts by America's farmers and ranchers, who work hard every day to provide a safe, abundant and affordable food supply.

All of the groceries collected during the 5-minute spree are purchased by the Farm Bureau and donated to the respective pantries. Many State Senators and State Representatives representing Kane County, local Mayors and elected officials have competed in the event, raising tens of thousands of dollars in groceries for local food pantries.

Through this and other hunger relief efforts including Harvest for ALL and the related Million Meal Challenge, KCFB members have donated the equivalent of nearly 1.75 million meals to area food pantries.

College scholarship corner

Kane County Farm Bureau Foundation's 2017-2018 scholarship applications are now available. Several scholarships are available to members or dependents of members pursuing higher education in an agricultural related field. Visit www.kanecfb.com to download an application and view all available KCFB Foundation Scholarships. You'll also find scholarship requirements and a brochure to help in identifying careers and areas of study. Last year, the Foundation awarded over \$30,000 in scholarships and internships to area students. The application deadline is February 15, 2017, and recipients will be named in April. Call 630-584-8660 with questions.

IAA Foundation - Agriculture students and Illinois Farm Bureau® (IFB) members and their children may apply for college scholarships offered by

the IAA Foundation, Illinois Farm Bureau's charitable arm. Seventy-one scholarships, ranging from \$1,000 to \$7,500 per year, will be awarded in total of \$121,500 for the 2017-2018 school year.

A full listing of available scholarships, eligibility guidelines, and application documents are available at the Foundation website, www.iaa.org. Completed applications must be submitted online by 12pm on Feb. 1, 2017.

For more information, contact the IAA Foundation at 309-557-2230, or e-mail smoore@iflb.org.

Kane County Corn Growers - the objective of the KCCG scholarship program is to assist students pursuing higher education and agriculture-related jobs and careers. Scholarships are available for both high school seniors and

college students. Applicants must be dependents of a current Kane County Corn Growers member. The application will be available at www.kanecounty-corngrowers.com by February 1, and is due March 31, 2017.

Kane County Fair scholarships - Scholarships are available to high school seniors who will graduate in this school year. They must also be a current member of 4-H and have exhibited at the Kane County Fair in at least one of the last two years. Applications will be reviewed and judged by the Fair selection committee. Scholarships are awarded to students pursuing higher education in any field. The deadline for applications is April 1, 2017. Please visit http://kanecountyfair.com/visitors_2008_4Hscholarship.cfm to download the application, and call 630 584 6926 with any questions.

KANE COUNTY FARM BUREAU BOARD ATTENDANCE JANUARY 2016 THRU DECEMBER 2016												
	JAN	FEB	MAR	APR	MAY	JUN	JULY	AUG.	SEP.	OCT.	NOV.	DEC.
C. BRADLEY	X	X	X	X	X	X	X	X	X	X	X	X
F. CARLSON		X		X		X	X	X	X	X	X	X
B. COLLINS	X	X	X	X	X	X	X	X	X	X	X	X
C. COLLINS	X	X	X	X	X	X	X		X	X	X	X
J. ENGEL	X	X	X	X	X		X	X	X		X	X
G. GAITSCH	X	X	X	X	X	X			X		X	X
B. GEHRKE	X	X	X	X	X	X	X	X	X	X	X	X
W. KECK	X	X	X	X	X	X		X	X		X	X
M. KENYON	X	X	X	X	X	X	X	X	X	X	X	X
K. KETTLEKAMP	X	X	X	X	X	X	X		X		X	X
D. LEHRER	X	X	X	X	X	X	X	X	X			X
N. LONG		X	X	X	X	X	X	X	X	X	X	X
D. PITSTICK		X	X	X		X	X				X	X
W. SCHNEIDER	X	X	X	X	X	X	X	X	X	X	X	X
J. WHITE	X	X	X	X	X	X	X	X	X	X	X	X

Kane County Farmer
KANE COUNTY FARM BUREAU
PUBLISHED MONTHLY
 Steven J. Arnold, Editor
 Suzi Myers, Ag Literacy Coordinator
 Audre Pack, Training Specialist
 Elizabeth Polovin, Member Services Coordinator
 Kristi Van Oost, Development & Program Coordinator
 Valerie Johnson, Administrative & Program Assistant
OFFICE: Randall Rd. between Routes 64 & 38
Address: 2N710 Randall Rd., St. Charles
PHONE: 630-584-8660
info@kanecfb.com www.kanecfb.com
OFFICE HOURS: 8:30-4:30 Monday through Friday
(USPS No. 289700)
POSTMASTER: Send address changes to Kane County Farmer
2N710 Randall Rd., St. Charles, IL 60174
Periodical Postage • Paid to St. Charles, IL 60174
Year Subscription: \$2.00

■ DISTRICT 1 Aurora, Sugar Grove, Big Rock Twnshp. Nan Long 11461 E. County Line Rd. Big Rock, IL 60511 815-693-7214 Donna Lehrer 7S027 Jericho Rd. Big Rock, IL 60511 630-556-3476 William Keck P.O. Box 281 Sugar Grove, IL 60554 630-466-4668	Joe White President 47W727 Main St. Rd. Elburn, IL 60119 630-557-2517 ■ DISTRICT 3 Virgil, Campton, St. Charles Twnshp. Frank Carlson 104 Sumac Court St. Charles, IL 60174 630-513-9980 Chris Collins 1143 Anderson Elburn, IL 60119 630-934-4642	Mike Kenyon Secretary/Treasurer 1250 E. Main St. South Elgin, IL 60177 847-741-1818 Craig Bradley 37W791 Orchard Lane Elgin, IL 60124 847-888-2380 ■ DISTRICT 5 Hampshire, Rutland, Dundee Twnshp. Joe Engel 516 Sawgrass Ln. Hampshire, IL 60140 847-347-5561 Gerald Gaitsch 10613 Brittany Ave. Huntley, IL 60142 847-669-2003
■ DISTRICT 2 Kaneville, Blackberry, Gen./Bat. Twnshp. Bill Collins 1125 Lewis Rd. Geneva, IL 60134 630-484-6852 Karl Kettelkamp OS860 Rowe Rd. Elburn, IL 60119 630-365-2713	Dale Pitstick 128 N Hadsall St. Genoa, IL 60135 630-816-0223 ■ DISTRICT 4 Burlington, Plato Elgin Twnshp. Beth Gehrke 12N860 US Hwy. 20 Elgin, IL 60124 847-697-2538	Wayne Schneider Vice President 721 Lindsay Lane West Dundee, IL 60118 847-428-0488

Special thanks

The Kane County Farm Bureau would like to thank Jay Schrock and the staff at Heinz Brothers Greenhouse in St. Charles for the use of their greenhouse and assistance with the KCFB annual citrus sale distribution in December. The Schrock family has allowed Farm Bureau to use its warm and inviting greenhouses for citrus distribution to our members on cold December days for a quarter century. We appreciate their generosity in helping to provide this service to Kane County Farm Bureau members.

.....

Didn't get your citrus this year? Watch the *Kane County Farmer* for information on "truckload" sales on citrus, fresh Illinois peaches, local turkeys, hams and other foods throughout the year, or call us at 630 584-8660 to be put on a mailing list for all our food specials.

Welcome new members

You receive the *Kane County Farmer* because you are a Farm Bureau member. If you are a farm operator or owner, you benefit from a local, state and national organization committed to agriculture and your way of life.

If you do not have direct ties to farming, your membership helps promote local farms and farming, encourages wise use of our limited natural resources and preserves farmland and our agricultural heritage while allowing you to enjoy COUNTRY insurance and the many other benefits of one of Illinois' premier membership organizations.

We appreciate your membership and continued support and we welcome your comments on the content of the *Farmer*. We encourage you to make recommendations about farm, home, food, natural resource, renewable energy or agricultural heritage and history related topics for inclusion in future issues of the *Farmer*.

Beef store is now open!
By appointment only

*farmdirect***BLACKANGUS.com**

100% hormone free beef.
 Selling individual cuts. Buy as little or as much as you want.

815.895.4691
 Mark & Linda Schramer, Owners
 8N840 Lakin Road, Maple Park

Sample Packs make great gifts!

Thanks to our donors...

The KCFB FOUNDATION offers its sincere appreciation to the following for their contributions in response to our December Agriculture in the Classroom fundraising appeal. These donations will allow the Foundation to provide funding to improve classroom education about food and farming. Names shown are pledges received from November 28 through December 15.

Our FOUNDATION is dedicated to providing agriculture based education for the next generation, and to meeting the challenge of providing food for a hungry planet. We look forward to continuing support for these scholarships, along with local classrooms and teachers, leadership training, and community youth education through grants to local FFA Chapters and 4-H.



Kane County Farm Bureau FOUNDATION
for the future of farms & food

Janet Spohr
Craig Spohr
Edward Regole
Mike and Helen Biddle
Mark Regole
Thomas Halat
Lynn and Betty Landmeier
Kenneth and Nancy Meyer
Edward Butts
Scott and Michele Horton

Andy and Sarah Lenkaitis
James and Deloris O'Connell
1st Farm Credit Services
Thomas and Janet Runty
Richard and Wilma Phillips
Richard Bartels
David and Carol Bateman
Charles & Mary Ellen Heidgen
Wendell and Mary Dienst

P & Linda Williams
Dan and Charene Nagel
Steve and Katie Downen
Edward and Margaret Wesemann
John Zeissler
Robert and Julie White
Yuhong Wang
John and Nan Long
Dunteman Grain Farms
Phil and Kristine Farrell



Through Harvest for ALL, KCFB members have contributed the equivalent of nearly 1.75 million meals to local food pantries.



Food>Forward provides a source of unrestricted funds for the KCFB Foundation to use for Scholarship, Agricultural Literacy and support of FFA, 4-H and community service programs.

Donor
Gehrke Family Farm
Suzanne Myers
Steven & Gladys Arnold
Mike Kenyon
Karl & Julie Kettlekamp and Paul "Griz" Stover
Mike Dienst & Family

Beneficiary
Food for Greater Elgin
Northern Illinois Food Bank
Northern Illinois Food Bank
Food for Greater Elgin
Elburn Food Pantry
St. Vincent De Paul of Maple Park

Donor
Steven & Gladys Arnold
John and Patricia Kozik
Names shown are contributions received November 15 through December 15, 2016.

Foundation fundraiser National Chili Day Cook-off

Have a Chili recipe that everyone loves? Why not show off your culinary skills by entering in the KCFB Foundation's first ever National Chili Day Cook-off!

National Chili Day is Thursday, February 23rd and what better way to celebrate than by making a winning pot of chili - while supporting the KCFB Foundation. Judging will be based on ICS criteria: good chili flavor, texture, consistency, blend of spices, aroma and color.

A trophy plus 25% of the entry fee for each category will be awarded to the top creations in the following:

Best Homestyle Chili: a spicy stew of beef and red chilies or chili powder often with beans and tomatoes or pasta could be added.

Best Non-Traditional Chili: Chili made with pork, chicken, turkey.

Best Wildlife Chili: Chili made using non-domesticated sources of meat protein.

Best Vegetarian Chili: Chili without meat

The judging for the best in each category will begin promptly at 5:00 PM by a panel of "celebrity" judges. Winners will be announced at the conclusion of judging.

A **People's Choice Chili** will be selected at the end of the night via public vote. Chilis will be numbered and the public will be invited to vote for their favorite. The People's Choice award winning chili (trophy PLUS bragging rights) will be announced February 24th. To enter just follow the simple steps below. Prizes will also be awarded for best presentation or theme (plan for 30" of table space) and best recipe card. Multiple recipe cards are encouraged.

How to enter:
1. Call, email, or mail in the entry form below by February 17th to:
KCFB Foundation Chili Cook-off, 2N710 Randall Road, St. Charles, IL 60174.
Email: info@kanecfb.com
Phone: (630) 584-8660
2. Pay the \$15 entry fee (one per pot of chili). Make checks payable to: KCFB Foundation. Visa, Discover, or MasterCard accepted in person or over the phone

3. Cook 6 quarts or more of chili and bring it to the KCFB before 4PM on **Thursday, February 23.**

Not a cook but still want to celebrate National Chili Day? Head on over to the KCFB office for a public tasting at 5:30PM. A \$5 donation will get you a 3 portion "flight" of chili sample bowls, and a grilled cheese sandwich while supplies last. Additional bowls, drinks, and snacks can be purchased as well.

All entry fees and event proceeds benefit the KCFB Foundation in support of agricultural education and college scholarships.



Chili Day Cook-off entry form (due by February 17th):

Head Cook: _____

Chili/Team Name _____

Type(s) of Chili:

Homestyle Non Traditional (meat _____)

Vegetarian Wildlife (meat _____)

Address _____

City _____ State _____ Zip _____

Phone (_____) _____

Entry fee: \$15.00 per pot
Make checks payable to: KCFB Foundation.
Visa, Discover, or MasterCard accepted in person or over the phone



4th graders to learn about local farms and food at Ag Days

Have a child, grandchild, niece or nephew in 4th grade? Want them to know where their food comes from? Why natural resources like water and soil are important? How the source of all things in their daily life is either agriculture or mining? Here's a chance for them to ask questions of people in dozens of careers, in the job field that feeds us all ... in a fun, interactive way.

Now is the time for teachers and parents to sign up. Public and private school 4th grade classrooms as well as home schooled students are welcome.

As many as 2,000 fourth-grade students and their teachers attend this agricultural themed expo in celebration of National Agriculture Week. Ag Days includes local farmers and pre-

senters from many facets of the agriculture industry, an indoor farm zoo and an outdoor farm equipment showcase.

The 33rd Annual Ag Days will be held at Mooseheart Fieldhouse near Batavia on March 21 and March 22, 2017. Students get to talk to farmers about their jobs, play interactive games and see farm animals and modern farm machinery.

"There's no cost for this two-hour field trip," noted Suzi Myers, ag literacy coordinator. "We'll send you a lesson to get them ready for the experience."

To register, contact Suzi Myers at 630-584-8660 or by email at aitic@kanecfb.com for more information.

Volunteer at Ag Days

This March, Kane County Farm Bureau and dozens of Ag Literacy volunteers will organize the 33rd annual Ag Days at Mooseheart. Please consider being a part of this great tradition by volunteering your time during this year's event, March 21 and 22.

For three decades, hundreds of Kane County 4th grade students have been gathering at Mooseheart Fieldhouse in March to learn about agriculture from farmers and representatives from local agribusinesses. The Farm Bureau would like your assistance with this Ag in the Classroom event.

Students rotate through a series of more than a dozen presentations on agricultural topics. This is one of the Farm Bureau's longest running and most popular programs. Students will learn about crops, livestock, natural resources, farm machinery and more.

Call 630-584-8660 to sign up for specific dates and times when volunteers are most needed.

Calling all Farmers and Landowners!

Our members belong to the Farm Bureau for many reasons. Some join to take action on behalf of agriculture. Others join to support Farm Bureau policies or assist with program efforts. Farm Bureau works on the local level, in Springfield and in Washington D.C. to support action not just on farm issues, but on many of the same things you're concerned about: protection of private property rights and the quality of the rural environment, tax policies and economic growth, and the quality and safety of our food supply. As a regular (voting) member, you are eligible to run for the Board of Directors and help

look out for the best interests of all of our members.

The KCFB Board meets the first Thursday evening of each month. For more information, about service on the Board of Directors, please contact President Joe White at 630 557-2517, Manager Steve Arnold at 630 584-8660 or any member of the Board of Directors. To nominate yourself or a neighbor for consideration, please fill out and return the form below to the Nominating Committee by February 15.

Board elections will be held by ballots mailed to regular (voting) members of the association in March.

**TO: Nominating Committee, Kane County Farm Bureau
2N710 Randall Road, St. Charles, IL 60174**

Name (please print) _____

Mailing Address _____

Township _____ District # _____

Telephone (_____) _____

Signature _____

Membership # (if known) _____

Form completed and returned by:

Name _____

Mail to this form to: Kane County Farm Bureau,
2N710 Randall Road, St. Charles, IL 60174
Return on or before February 15, 2017
The Nominating Committee will evaluate candidates and propose a slate to run for director.

AG LITERACY CORNER

By Suzi Myers



January is here with all the splendor of winter. These are the days where we just want to sit by the fireplace and sip hot chocolate as the snow falls and the wind blows outside. However, this is also a great time to bundle up and head outside ... the all-white world is waiting to be explored.

We all know about sledding down a hill and then pulling the sled back up the hill only to swoosh down once again. I thought my kids would never want to quit this up and then down activity. Then there's ice skating. I remember when I was a kid in Elgin, we'd go nightly to Lord's Park to skate on the lagoons and then warm up by the stove in the pavilion ... such fun. Some brave folks ski, either

downhill or cross country, neither of which have been on my "to do list", especially since I'm not the most coordinated person.

Backyard fun in the snow can be done without traveling anywhere and close to warmth and hot chocolate. What are backyard activities besides making snow angels or snowmen? Try looking for animal tracks and then following them to see what happened when you weren't around. My yard is frequented by raccoons, birds, possums, squirrels, and little tiny critters. Kids enjoy looking for prints and then figuring out who made them. As a kid, we'd pour plaster-of-paris on the tracks to make an impression of them.

Making ice hangings is another backyard project. Lightly

KANE COUNTY FARMER

spray a pan with oil, put some leaves, twigs, nuts or such in the pan and then fill it with water. You can color the water with food coloring, or leave clear. Put the pan out in the cold and it will freeze. Take the ice out of the pan and hang the frozen art from a tree branch to see it sparkle in the sun ... beautiful.

Recycle a squeeze bottle from mustard, dish soap, etc. and reuse it as "a squirt of color bottle." Fill the bottle with colored water and let the kids squirt it on the white snow to make their artwork - creativity rules.

Have the children look for the longest or fattest icicle they

can find. Have them measure each of them that they find which will help them with their math skills. You might even record the sizes and graph the results.

Even if you don't want your child out in the cold, they can still have fun with snow. Bring some into the house and let them explore with measuring cups, trucks, spoons and other around the house things. Even some little cars, animals, people or trucks can be used. A big pan in the kitchen sink could be used to hold the snow, or it could be put into the bathtub. When it melts, there's always more to be found outside, or

the activity could change to "what floats or sinks" in the melted snow.

Another indoor activity would be to make a simple bird-feeder and then hang it outside where you can watch the birds come to eat. If the children can look up the unknown birds that arrive at the feeder, it becomes an educational activity too.

The list of snowy things to do could be much longer; all it takes is some imagination. Being outside and taking the time to appreciate its beauty, makes the warmth of our homes even more inviting. Hope to see you outside enjoying this special wintery month.

Book of the month

Brand new to our library shelves, *Sleep Tight Farm* tells the story of how a farm prepares for the winter. The farm in the story is in Vermont; however, the similarities of how the farmers get ready for the change of season with those in Illinois are many.

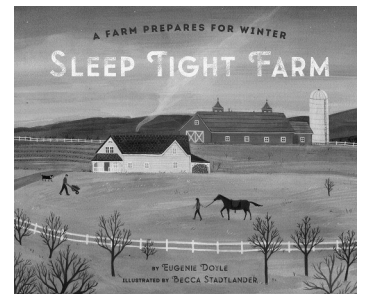
The hay is stored, crops are harvested, animal shelters are repaired, machinery is put in the shed, and wood is cut to burn during the cold times ahead. The chores are shared by all those in the family, as their

mom says, "Many hands make work light."

Once the work is finished, the family strings festive lights and ignites candles to celebrate the longest night. At the end of the day, Dad tucks the young farmers in for the night, "Good night, farmers, sleep tight."

This is only one of the children's book concerning winter that is available for check out from our agricultural library here at the KCFB. Our library began due to a request years ago by Bob Konen and Dean Dunn.

We have an ever growing selection of titles. Feel free to come in to browse in our library and to check out books of interest.



Sleep Tight Farm by Eugenie Doyle

Women's Corner

By Louise Johnson
Women's Committee Chair



Happy New Year!

The Annual Meeting of the Illinois Farm Bureau (IFB) was in Chicago at the beginning of December. It is great to visit with farmers throughout the state! Every year at this meeting, delegates/farmers from every county decide on the focus and direction of IFB for the following year. It is hard and time-consuming to set policy that represents farmers from east to west and from top to bottom of our varied farming environment in Illinois. It is wonderful to have an organization which represents all of its members.

Throughout the IFB convention there were "Micro Talks" on a variety of topics. Topics were far-ranging, from drones to grain marketing, to the Palmer House Brownie, to crop insurance, to butterflies, and many more. Consider attending next year!

The following information was presented at one of the "Micro Talks" that I attended at the IFB convention. Check your credit card statement every month for strange charges that you did not make! Also, cards may be tested that they are "active" by a small charge of a dollar, or less. If that goes through, the thieves may not use your card for six months, so you

cannot tell where or when the number was stolen. There is new chip in credit cards that prevents "card readers" from "skimming" your information. Unfortunately many stores have not implemented this technology yet. By October of this year, however, all stores accepting credit cards must have chip readers. Europe has had this technology for several years and they have greatly reduced credit card fraud.

The St. Louis Science Center's GROW Exhibit had a table at the IFB convention. Various farm organizations were sponsors of this new, permanent exhibit. Be sure to visit GROW with your children when you are in the area!

I thought you might like a "lite" fruit salad recipe this month, after all of the feasting of November and December.

ABC Salad

Apple chunks
Banana slices/pieces
Coconut flakes
Plain yogurt, to moisten
Honey, to lightly sweeten & to keep apples fresh

(Amounts vary according to want, need, & taste.)

Mix all together.

(I've also added other fruit that I've had on hand; such as, grapes, halved, or small tangerine sections (unbroken, if possible).

CONNECT WITH US



DONALD J. FEE, DDS
FAMILY DENTAL CARE
26 W. CROSS ST. SUGAR GROVE DONALDFEEDDS.COM
630-466-4511

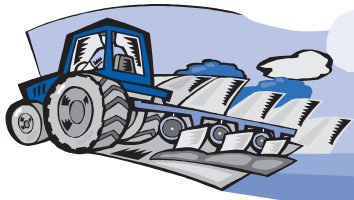
Helping you protect what matters most



AUTO | HOME | LIFE | BUSINESS | RETIREMENT

Bob Effner , CLF®, LUTCF St. Charles - Elgin Agency Manager St. Charles 630-584-0001	Edward Stuehm Geneva 630-845-8245	Ashraf Gerdes Aurora 630-898-3750
Todd Wilcox St. Charles 630-762-1326	Michael O'Brien Geneva 630-762-0852	Sherri Schramer Elburn 630-365-9500
Bobbi Boston St. Charles 630-485-5155	Rowena Ortac Geneva 630-262-1061	Dominick Davero Elburn 630-365-3737
Keith Eakins St. Charles 630-762-1324	Steve Spoerl, Jr. Geneva 630-262-1078	Chuck Quick Hampshire 847-683-2100
Donna Tonovitz St. Charles 630-549-7694	Bob Baty Geneva 630-492-5317	Josh Austin Hampshire 847-683-2100
Orazio Difruscio St. Charles 630-549-7696	Luke Fawkes Elgin 847-742-0001	Bob Riedel West Dundee 847-428-5434
Dan Cooper Sugar Grove 630-466-9600	Jonathan Gonzalez Elgin 847-742-0001	Gary Bolger West Dundee 847-531-6110
Ted Schuster Sugar Grove 630-466-9600	Sherry Lochen Elgin 847-742-0001	David Murray Montgomery 630-897-2364
Sonny Ellen Sugar Grove 630-466-9600	Bob Kearns S. Elgin 847-888-3200	

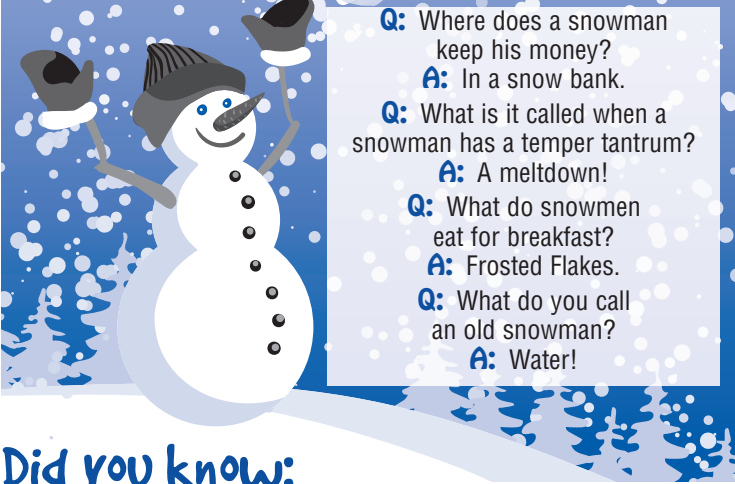
Auto, home and business insurance policies issued by COUNTRY Mutual Insurance Company®, COUNTRY Preferred Insurance Company® and COUNTRY Casualty Insurance Company®. Life insurance policies issued by COUNTRY Life Insurance Company® and COUNTRY Investors Life Assurance Company®. Fixed annuities issued by COUNTRY Investors Life Assurance Company®. All issuing companies located in Bloomington, IL.



Farm Facts @ Fun

Compiled by Suzi Myers

Snow



- Q:** Where does a snowman keep his money?
A: In a snow bank.
- Q:** What is it called when a snowman has a temper tantrum?
A: A meltdown!
- Q:** What do snowmen eat for breakfast?
A: Frosted Flakes.
- Q:** What do you call an old snowman?
A: Water!

Did you know:

- ✿ It can be as warm as 40 degrees on the ground and still snow.
- ✿ According to the "Guinness Book of World Records," the biggest snowflake on record occurred in Montana in 1887. It was eight inches by 15 inches.
- ✿ The record for the most snowfall in a 24 hour period in the United States happened in Silver Lake, Colorado in 1921. During that 24 hour period, six feet and four inches of snow fell.
- ✿ While you may have heard someone say, "It's too cold to snow," there is no truth to this. Snow can always fall if it is cold out and there is moisture in the air.
- ✿ The coldest temperature ever recorded on Earth was -128 degrees. The temperature was measured on Antarctica in 1983.
- ✿ Every snowflake has six sides.
- ✿ The Abominable Snowman is more than an invention of a television Christmas special. While there is no proof that it exists, many people believe that the Yeti, or an abominable snowman, lives in the Himalayas in Nepal. The word Yeti means snow bear, and many people believe the Yeti is related to Bigfoot.
- ✿ Buffalo, NY maintains the all-time high for snowfall in a single season, holding the record at 199 inches, all of which accumulated during the 1976/77 winter.
- ✿ In 1988, a scientist found two identical snow crystals. They came from a storm in Wisconsin.

Recipes for Chasing the Chill

Snow Pancake Recipe
(oldest I found was from 1836)
2 cups of flour
1-tablespoon baking powder
1/2 teaspoon of salt
1 tablespoon white sugar
2 eggs well beaten
1-1/2 cups of milk



In a large bowl mix and sift the flour, baking powder, salt and sugar together.
Combine the eggs and milk in another bowl.
Slowly add the milk and egg mixture to the dry ingredients. Stir well and set aside. The batter will be thick.
Next grease your griddle and get it good and hot.
When the griddle is hot,

quickly go outdoors and scoop up fresh snow.

Fold in 1-1/2 cups of new snow and mix well.

Cook the pancakes as usual.

Tips for Snow Pancakes: Old snow won't do. Use only fresh, light and newly fallen immaculate snow. Small amounts of naturally occurring ammonia in fresh snow act as a leavening agent and cause the pancakes to rise. Ammonia in new snow will evaporate very soon after it has fallen.

Irish Beef, Cabbage, and Potato Soup

2 tablespoons olive oil
2 pounds boneless beef chuck, cut into 3/4-inch pieces
Kosher salt and black pepper
1 onion, chopped
1 28-ounce can whole peeled tomatoes
8 cups low-sodium beef broth
1-1/2pounds red potatoes, cut into 1-inch pieces
1/4 head green cabbage (about 3/4 pound), sliced
1. Heat the oil in a large pot over medium-high heat. Season the beef with 1/2 teaspoon each salt and pepper. Cook, in batches, until brown on all sides, 10 to

12 minutes. Transfer to a plate; reserve the pot.

2. Add the onion to the reserved pot and cook, stirring occasionally, until tender, 3 to 4 minutes. Add the tomatoes, breaking them up with a spoon. Cook, stirring occasionally, until thickened, 10 to 12 minutes. Add the broth and beef and bring to a boil. Reduce heat, cover, and simmer until the beef is almost tender, 25 to 30 minutes. Add the potatoes and simmer until almost tender (they will meet resistance only in the middle when poked with a knife), 8 to 10 minutes. Add the cabbage and simmer until the potatoes and cabbage are tender, 6 to 8 minutes.



No winter hibernation for farmers

*"In seed time learn,
in harvest teach,
in winter enjoy."*

— William Blake

William Blake was mistaken if he thought all farmers did in the winter was enjoy it. The time when they don't have to tend to their crops is not wasted by the farmer. Winter is a time spent in three main spots: the semi, the shop, and the computer. Each of these tasks is equally important to make sure all the work gets done right and on time. Here's a list of the winter chores for the farmer.

• **Hauling Corn and Soybeans:** The corn and soybeans that have been stored in grain bins have to be hauled to the granary sometime before spring.

• **Cleaning and fixing equipment.** After the busy harvest season, the machines need some maintenance, like simple oil changes or some improvements might be made, like installing new belts or chains on the combines.

• **Budgeting:** Winter is the time to work the books to see what money was spent and earned to set the next year's budget.

• **Taxes have to be done.** This entails much paperwork and usually an accountant.

• **Marketing:** This is the most important job of the winter, and ties together budgeting, hauling grain, and pre-purchasing inputs. The more accurate the budget is, the better farmers know what price they need to sell at to achieve a profit. They also need to know what their cash flow needs are to ensure they can sell grain at the right times to get their bills paid. Furthermore, farmers have to be able to actually get the grain moved to get their contracts filled, so keeping an eye on trucking capabilities is vital as well.

Snow

Z B U O R R I P W J I Q A O W L W N E A
 Z I Y Z T Q A D K O E S G H L E S O G L
 T O T N O N D Z F X N F P L O G D O L N
 E E I I C M R O T S V S F J J N G M Y P
 B A W A F L M D A G E X N E C A T I C Q
 P L K Y W F V E E N R C O Q R P O K O F
 U E I W V G A H U I E H T R W S W S L T
 S L O Z W P O R O L T B G D K P O E O F
 F I Q O Z K E P G L A L N N E E T N R O
 O O L G I A F T D A W U I L E V O H S R
 K R J V D K R U I F D E H R T J S E V T
 J F R O R B A D F H H T S H C X L S Q E
 N F W F Y A P R N X W O A W B K A C B V
 W A F E W B E N P U H B W R W O D X X H
 K A M D A E B X L Q S V K Y F T S T S T
 M O H W Z T C I B C B C E E U A L I U C
 F A A I O T H A K I A U K T S M I J W I
 A Z N F U N H E N P D E B E W E O O L M
 Z G P P M P S V R D P J P D E S V G X N
 Q F U P J Q D Y K J Y N P I G E Q K P P

- | | | | | |
|----------|----------|-----------|----------|------------|
| ANGEL | ESKIMO | IGLOO | PANCAKES | STORM |
| BLIZZARD | FALLING | JEFFERSON | PLOW | WASHINGTON |
| BLUE | FORT | PACK | SHOVEL | WATER |
| CANDY | FREEZING | PAINT | SNOW | WEATHER |
| COLOR | GRAFFITI | | SNOWMAN | WHITE |

Name _____
 Address _____
 City _____ State _____ Zip _____
 Telephone (____) _____ Email _____ Age _____

Return to: Kane County Farm Bureau, 2N710 Randall Road, St Charles, IL 60174 by January 15, 2017 to be entered in our drawing for a snow-themed prize.

Congratulations

Jayson Bradshaw of South Elgin. His name was chosen from the entries received for correctly completing last month's Word Search Puzzle. For his participation, he receives bag of horseradish goodies. Thank you, Jayson for reading the *Kane County Farmer* and continue to watch each month for more great opportunities from the Kane County Farm Bureau.

January is:

- National Bath Safety Month
- National Blood Donor Month
- National Braille Literacy Month
- National Hobby Month
- Hot Tea Month
- National Oatmeal Month
- National Soup Month

Special Days:

- Jan. 3:** National Fruitcake Toss Day
- Jan 4: National Spaghetti Day
- Jan 11:** National Milk Day
- January 13:** National Rubber Ducky Day
- National Blame Someone Else Day
- January 16:** Martin Luther King Jr. Day
- January 19:** National Popcorn Day
- Jan 20:** Presidential Inauguration Day
- National Cheese Lover's Day
- Jan 28:** Chinese New Year's Day
- National Seed Swap Day

Touch-A-Tractor 'wish list'

KCFB is gearing up for its 12th annual Touch-A-Tractor event scheduled for April 7-9. The team is working hard to make it the best one yet, but we need your help! KCFB is now seeking donations of items to help with this endeavor.

One of the goals of the event is to engage children while teaching them about farms and food. New additions to the event will allow children to explore the world of agriculture by: getting the chance to dress up like farmers, play with authentic farm kitchen essentials, experience the thrills farm kids get by

playing on round bales or crawling through culverts.

KCFB is seeking donations of youth sized farm clothing/costumes (plus boots and hats), old kitchen utensils and cooking supplies, and various other items commonly found or used on farms. This list includes such

items as plastic culverts suitable for crawling through, clean plastic 30 gallon drums for a riding mower "train," and even large round hay bales.

If you are interested in providing a donation, or know of a business or individual that might

be interested in doing so, please contact the KCFB office at (638) 584-8660 or feel free to stop by our office with your item(s).

Your donations will help make our 12th Annual Touch-a-Tractor a success.

"Wish list" items wanted for Touch-A-Tractor

- Plastic culverts will make fun additions to our children's activities center.
- We are in search of 30 gallon plastic drums that can be used to create a lawn mower powered train for children to ride in at the event.
- Round hay bales – we are seeking three of these to add to our Touch-A-Tractor children's activities area to be used for climbing and recreational purposes.
- Donations of old pots & pans, wooden spoons and the like will be used to make a "percussion string" in a tree on the Farm Bureau lawn. This sound machine is made by hanging pots, pans, and other noise makers from the lower branches of a tree.
- Farm related youth clothing, boots and hats and other farmed themed items to help with a new addition to the event which allows children to dress up like farmers for a photo-op.



What's new in the COUNTRY agencies?

St. Charles Agency, Bob Effner, Agency Manager

DONNA TONOVITZ has been named the Financial Representative of the Month for November 2016 in the St. Charles/Elgin Agency, as announced by Agency Manager, Robert J. Effner, Sr., CLF®, LUTCF. Donna has provided tangible plans for addressing the immediate and long term insurance and financial security needs of her clients through COUNTRY Financial's diverse

products and services: Auto, Farm, Home, Life/Disability/Health/Annuities/Long Term Care, Retirement Planning, Business and Investments. Contact her at: 1118 E. Main St., Ste. 1A, St. Charles, 60174; Phone 630-549-7694; email donna.tonovitz@countryfinancial.com. Congratulations to Donna!

Aurora Agency, Kevin Gomes, Agency Manager

Zach Fox, Financial Representative with the Aurora

Agency, is our Financial Representative of the Month for November, 2016. Zach began his career with COUNTRY Financial in May of 2007 and services clients out of his office located at: 0 Wilson Street, Batavia, 60510, (630) 406-6900.

Zach's professionalism and vast knowledge of auto, home, life, commercial and financial products make him a great person to do business with. Congratulations, Zach!

Livestock and tractors sought for Touch-A-Tractor

Kane County Farm Bureau's 12th annual Touch-A-Tractor will be held Friday – Sunday, April 7-9 and preparations are in full swing. Our goal is to make this year the best one yet, and would love your help. We are currently seeking person(s) interested in bringing antique tractors or farm animals to the event. This is a great way to show the community what you or your business has to offer.

The farm to city event is widely populated by the entire northern Illinois area, as it provides kids with the opportunity to touch and even sit in seats of big machines they normally only



Touch-A-Tractor

Touch-A-Tractor – the name says it all! Well almost. There are dozens of hands-on activities and fun for the family. Come on out to the Farm Bureau to celebrate the coming of spring, April 7-9, 2017.

tractors and farm equipment and visit animals such as baby chickens, sheep, a calf and a miniature horse at the farm zoo.

Please call us if you have an antique tractor or farm animals that you could bring to the event. We also need farmers, or retired farmers, to explain how the equipment works, volunteer to take tickets and staff kids games, make popcorn, etc. If you are interested in volunteering or have tractors or equipment to share, please complete and return the form below.

Help make Touch-a-Tractor a success.

Contact me about volunteer opportunities (Saturday, April 8 or Sunday, April 9)

I would like to bring the following farm equipment or livestock to display for your guests

Please provide a brief description of the equipment/livestock. For tractors, include year, make, and model.

Name _____

Address _____

City _____ St _____ Zip _____

Phone (_____) _____

Clip and return to Kane County Farm Bureau, 2N710 Randall Road, St. Charles, IL 60174

Private well testing program in February

The Kane County Farm Bureau and Kane/DuPage Soil and Water Conservation District are cooperating again to offer a water testing program in February 2017. A high quality water supply is vital for families, and this program helps provide peace of mind and identifies potential problem areas for homeowners of Kane County.

The program works simply as follows:

Step 1. Monday, February 13 – Friday, February 24, 2017

Pick up water test kits from the Kane County Farm Bureau, 8:30am-5 pm or from Kane/DuPage Soil and Water Conservation District, 8am-4:30pm, M-F. Payment due for each test kit upon pickup.

Step 2. Sunday, February 26, 2017

Collect the water sample.

Step 3. Monday, February 27, 2017

Return water sample to Farm Bureau or Kane/DuPage Soil & Water Conservation District.

Costs vary for depending on which tests you have performed on your water. Three kits are available:

A. Basic Package (Nitrate Package) – \$45.00

Tests for nitrate, nitrite, ammonia, chloride, sulfate, soluble phosphorus, silica and specific conductivity.

B. Pesticide Screen – \$80.00

Indicates the presence of triazine herbicides, lasso, dual or harness.

C. Metals – \$95.00

Tests for 23 different metals.

More detailed sampling instructions will be included in each kit and additional information on how each test can help you is provided at the Farm Bureau or Kane/DuPage Soil and Water Conservation's District offices. Testing will be performed by Heidelberg College Water Quality Laboratory in Tiffin, Ohio, a certified lab that has been nationally recognized for its work in testing rivers and lakes, and results are mailed directly to your home. We are able to provide these deeply discounted testing fees because we are providing the laboratory a bulk number to be tested.

Call Kane County Farm Bureau at 630-584-8660 with any questions.

CLASSIFIED ADS

CLASSIFIED AD RATES

Classified advertising rates: 20 cents per word/\$20 minimum (60 words or less). DISCOUNTS for members: Associate members, 20%; Voting members, 30%; PLUS members, 40%. Advance payment requested. Ads due by the 15th of every month for the next issue. No advertising (classified or display) for financial or insurance services will be accepted. Call 630-584-8660.

FOR SALE

Winpower PTO generator model #25/15 PT2 \$1,000.00 Call Tom, 630 464 4140

Cav-a-poo puppies for sale, born 11/12/16. (Poodle and Cavalier King Charles spaniel) \$800.00. Red and white. No papers. Ready for their forever home

1/12/17. 3 male 4 female home raised. Call: 815 923 2297

SERVICES

Autumn / Winter Tree Pruning & Removal. Ask about my no-haul-away DISCOUNT. www.Arbor Joe.com – ISA Certified Arborist Joe. Call: 224 789 8773

Jim Verhaeghe & Sons, Inc. – Tree removal, tree trimming, & stump grinding. Backhoe work & Tile Lines. Fully insured – Free Estimates – Jim Verhaeghe Sr. Call: 847 334 5730

WANTED

Want to buy vintage & used tools Call Chris – Also, we do cleanouts. Call: 630 550 7182

Will pick up for free unwanted or old snowmobiles, call Jon. Bobcat work & weed mowing; deliveries of dirt, stone, sand & mulch. call Jon at 630-254-9446



Recycle

Scrap for CASH

Steel, Copper, Aluminum & Cars

Trucking & Dumpster Service Available

"Helping to keep America Picked up for 45 years"

Zimmerman Recycling, Inc.
301 Industrial Drive, DeKalb
(815) 756.8600

Happy New Year
from the Kane County
Farm Bureau

CONNECT WITH US



Make-and-Take Wreath Workshop

Photos, top to bottom:

Monday, November 28th, KCFB hosted its first ever Make-and-Take Wreath Workshop! Denise Marks, wife of Christmas tree farmer Harold Marks, showed participants how to snip leaves from evergreen branches, use a wreath making machine, and decorate their personal creation like a pro. Here Denise helps Helen Kramer put the finishing touches on her wreath.



Workshop participants learned how to snip evergreen leaves and worked hard finding the perfectly shaped branches to add to their wreath or cross. They used special wreath making tables to put their creations together, then added other decorations before tossing on a signature bow.

Jenny Godfrey (left) and Kim Munkle (right) thoroughly enjoyed the class and are interested in a repeat next year.

Hot Cocoa in the Morning, Afternoon and Evening

By Kristi Van Oost



When I was a youngster, I always looked forward to the first snowfall of the winter. After the wonderful spectrum of fall colors faded to brown, my child self couldn't wait for the white blanket of fresh snow to cover the yard. Of course, the potential of the snow causing a snow day made me happy as well. Snow days were a family affair in my house, and often meant that my mother would stay home from work as well. After that early morning phone call from the school, my sisters and I would bundle up in our warmest winter wear, grab our big red sled, and make our way to the park that had the greatest sledding hill. All of the other neighborhood kids would join us, and we would take turns sledding down the hill until we could no longer feel our fingers or toes. Then we would make the trek home where our mom was waiting with large mugs of hot chocolate. Whenever we ventured out into the showy tundra, we would always come home to a mug of hot cocoa.

I may be all grown up now, but the cold weather always leaves me craving a nice cup of hot chocolate. In fact, when I was in college, I was known for having up to four cups a day; however I could never make it as well as my mom used to. This naturally led to a curiosity of cocoa beans as an agricultural product.

As it turned out, one my classmates spent a summer interning in South Africa, where she was able to witness a cocoa bean harvest. Of course, she was more than happy to tell me all about her experience, starting with the "Theobroma Cacao" or cocoa trees. Cocoa trees grow in tropical climates such as a rain-forest and bear fruit when they are 3-4 years old. The trees produce pink and white flowers all year long, and the pods from which the beans are harvested grow straight out of the trunk and main branches. The tree pods are harvested two times a year, which is a very labor intensive task. Ripe pods are picked and then split open to harvest the beans. The beans are then fermented to develop optimum chocolate flavor, dried, and then bagged before being shipped for further processing. Upon arriving at a processing plant, the dried beans are winnowed (separated into small pieces), Roasted and ground before being used to make chocolate and other goodies like hot cocoa.

Now that I am out of school I have cut back on my cocoa consumption, however I still indulge in a cup or two whenever the weather gets cold and a blanket of snow covers the county. Every time I make up a mug, I find myself thankful for the cocoa farmers who made this piping hot mug of deliciousness possible.

FB volunteer event at Northern IL Food Bank

Join the Kane County Young Farmers at Northern Illinois Food Bank on Jan. 26 from 5-7pm to repack food for redistribution to local food pantries. FFA members from area high schools are invited too. You'll

help in the fight against hunger, make some new friends and learn about the good things the Young Farmers Committee is doing in Kane County.

We're especially interested in connecting with 18-35 year olds looking to get involved in community service or agriculture related events. No experience is necessary, just a genuine interest in farm and food related concerns. As this is a community service, and the fight against hunger can and should be waged by all, all Farm Bureau members, friends and potential members are welcome! Call the Kane County Farm Bureau to RSVP at 630 584-8660.

Out of 18,239 Chicagoland non-profits, the Northern Illinois Food Bank was included in Chicago Magazine's Top 20 Best Charities list in the November issue.

The Food Bank provided their 5 millionth (5,000,000) serving of milk in December 2015 through their Milk2My Plate program! All of Kane County Farm Bureau's and member donations to Harvest for All support the Milk2MyPlate program.



Johnson

Water Conditioning Co.



Water Softeners
Iron & Sulphur Filters
Drinking Water Systems
Sales-Rentals-Service
All Makes

Kane County Farm Bureau members receive 10% discount on all service work.



FACTORY DIRECT PRICES

◆◆◆◆ NO FIX - NO CHARGE ◆◆◆◆



630-584-5559



www.johnsonwater.com



Your ticket to.....

Family entry at



Touch-A-Tractor

Cash & prizes in the

WINNER'S CHOICE RAFFLE
Kane County Farm Bureau FOUNDATION

and support for



AGRICULTURE
in the ClassroomSM



WINNER'S CHOICE RAFFLE

Name (print) _____

Daytime Phone _____
to receive future raffle notifications, please provide:

Email _____

Address _____

City _____ State _____ Zip **335**

WINNER'S CHOICE RAFFLE
Kane County Farm Bureau FOUNDATION

Save for FREE admission
Touch-A-Tractor
April 7, 8 & 9, 2017 - St Charles

Win this **GRAND PRIZE 1953 Farmall Super C**
or a **John Deere X350 riding mower** or **\$2,500 cash**

2nd prize: \$500 in groceries
3rd prize: \$500 in fuel
4th prize: \$250 in Farm Bureau Bucks

Tickets:
\$10 each
3 / \$25



Drawing 3 p.m. Sunday, April 9, 2017, Touch-A-Tractor at Kane County Farm Bureau, Randall Rd. at Oak St., St. Charles, Illinois.
Winner need not be present to win. Winner responsible for all applicable local, state and federal taxes associated with prize chosen.

Proceeds benefit KCFB Foundation college scholarships, agriculture education & local FFA chapters.



Get your ticket today.

630.584.8660 or kanecfb.com



Kane County Farm Bureau FOUNDATION
for the future of farms & food

Help the KCFB Foundation raise funds with Tractor Raffle

The Kane County Farm Bureau Foundation Winner's Choice Raffle gives the grand prize winner a choice of a nicely restored 1953 Farmall Super C or a John Deere riding lawn mower or \$2,500 cash. The farm, food and fuel theme is rounded out with second prize

of \$500 in groceries, third prize of \$500 in fuel, and fourth prize of \$250 in Kane County Farm Bureau Bucks. The drawing is April 9 at Touch-A-Tractor.

This Winner's Choice Tractor Raffle is the Foundation's primary fundraising endeavor. Last year's raffle

helped the Foundation provide college scholarships to 16 students and funded internships to help future Ag industry leaders get practical experience.

Tickets are \$10 each or 3 for \$25. All proceeds benefit college scholarship and Kane County Farm Bureau Ag

literacy programs. Call 630-584-8660 or complete the form below to request tickets.



Young Farmers update

By Carolyn Gehrke, Secretary

The Young Farmers met in November to review the past year and plan future activities. Old business included reviewing plans for a Northern Illinois Food Bank farm plot. The Young Farmers have committed to tillage, planting, spraying, and harvesting of the 2017 soybean crop, and providing NIFB assistance in making contact with input suppliers who may be interested in cooperating in the project.

New business included information regarding the IFB Annual Meeting in Chicago and setting dates for future events. The Young Farmers will gather on January 6 for a Christmas Party at Sorrento's restaurant in Maple Park. The annual FFA Acquaintance program was discussed and set for January 26 at the Northern Illinois Food Bank, the same location and program as last year. Officer elections for the 2017 calendar year were held, with Wayne Gehrke elected as Chairman, and Carolyn Gehrke as Secretary.

Annual Meeting report: on Saturday, December 3, Sarah Lenkaitis represented District 1 in the 2016 Young Leader's Discussion Meet, and advanced to the Sweet 16. Lynn Doran of Champaign County won the meet. In the evening, a group of 12 mem-

bers and guests enjoyed the annual Young Farmer's Dinner downtown at The Marq on Adams Street. We had a wonderful evening, and would like to thank everyone who joined us. Kane County received the Most Outstanding YL Program Award for Group 5 at the Young Leader Awards Program on Sunday, December 4.

Future Young Leader Events:

- **Jan 27-28:** ILFB Young Leader's Conference in East Peoria
- **March:** Euchre Tournament at the Kane County Farm Bureau

The next IFB Young Leader's Ag Industry Tour is to Ontario and Quebec, Canada in summer 2017. More details are forthcoming.

Young Farmers meetings are open to KCFB members age 18-35 and new faces are always welcome. Check Kane County Farm Bureau's Facebook page for upcoming meeting dates and social outings or call 630-584-8660.



The Winner's Choice Tractor Raffle offers a chance to win one of these great prizes!

Grand prize:
Winner's choice of a 1953 Farmall Super C or a John Deere riding lawn mower or \$2,500 cash.

Second prize:
\$500 groceries

Third prize: \$500 fuel

Fourth Prize:
\$250 Farm Bureau Bucks

KCFB Foundation Winner's Choice Tractor Raffle

Please send me _____ tickets (\$10 each or 3 for \$25)

Name _____

Address _____

City, State, Zip _____

Email _____

Phone (_____) _____

Return with check payable to
Kane County Farm Bureau Foundation, 2N710 Randall Road,
St Charles, IL 60174 **or** charge my:

____ Visa ____ MC # _____ Exp ____/____/____

Signature _____ Date ____/____/____

At last year's NIFB volunteer event, nearly 20 Young Farmers, Kaneland FFA members and FB supporters repackaged 1,940 pounds of potatoes and 908 pounds of corn flakes. Both were repackaged for distribution to the Food Bank's network of food pantries, providing the equivalent of 2,372 meals for the hungry in Kane County. To join the Young Farmers and FFA Chapters this year on Thursday, January 26 from 5-7 and provide local hunger relief, RSVP to the Farm Bureau at 630-584-8660.



See story on page 7 for more information.

Recruiter of the Month

Each month, Kane County Farm Bureau honors the person or persons who sign the most members into our organization. This month we would like to congratulate Jonathan Gonzalez. Jonathan has been an agent with COUNTRY's St. Charles/Elgin Agency since March 2010. Jonathan services clients from his office at 1750 Grandstand Place, Elgin, 60123. Jonathan may be reached at 847-742-0001.



Jonathan Gonzalez

Heather Pierson, former KCFB Young Farmers chairman, stood up to receive two awards at the IAA Annual meeting on Sunday, December 4. Kane County received the Most Outstanding YL Program Award as well as Top Harvest for ALL Contributor award for group 5.



Start Your Journey With Us And Be A Leader In The Future Of Agriculture

Plant with Precision Planting:

the original creator of the planter of the future

Precision Planting has always known that you don't need to buy a planter to make a huge impact on your farm. They have been making a difference in how planters plant and increasing yields across the country. Whether you want to double your speed, start multi-hybrid planting or have another vision for what you want your future in farming to be, we are here for you.

20/20 SeedSense • DeltaForce • vSet • vDrive • SpeedTube • WaveVision • AirForce • RowFlow • YieldSense • Keeton • BullsEye • vApply HD • Furrow Jet • Clean Sweep • eSet • Precision Meter • vSet Select • vDrive

Insecticide



4098 W. Midtown Rd.
Mt. Morris, IL 61054
www.witmerprecision.com
815-734-6236

Meter Service Promotion

Bring your meters in for service at our Maple Park location and we will donate \$5 per meter to the FFA Chapter of your choice! Promotion runs thru March 31, 2017.

