

Kane County Farmer



**KANE COUNTY
FARM BUREAU®**
Farm. Family. Food.™

*Enhance the quality of life for member families;
Promote agriculture, farms & food; and,
Advocate good stewardship of our land and resources.*

VOL. 86 NO. 5 MAY 2021

Touch-A-Tractor brings farm life to the suburbs

Hundreds of families and dozens of faithful volunteers enjoyed a weekend on the lawn at the Kane County Farm Bureau during Touch-A-Tractor in April. Mother Nature helped us with moderate temperatures and occasional sunshine peeking through the clouds. The family friendly event offered the opportunity to get outside and enjoy activities, learn about agriculture and see farmers that provide food for a growing population, in all kinds of weather.

Machinery on display included Allis-Chalmers, Farmall, John Deere, Minneapolis-Moline, Case and Oliver antique tractors alongside modern farm tractors from Kubota, Massey Ferguson and John Deere, along with spraying, tillage and haying equipment, a combine and a rare

1912 Port Huron Steam Engine. Vintage trucks making appearances included a 1950 International flatbed and a 1938



Studebaker pick-up to encourage guests to take a chance at winning a vintage truck of their own.

Visitors of all ages enjoyed seeing baby chicks, goats, and a one week old calf. Other attractions

included giant Jenga games, a pedal tractor corral, a "culvert crawl," and farm "hoppers" for kids to bounce on.



The dozen or more antique tractors on the lawn are always a hit – a perfect combination of children's imaginations and parent's photo-ops.

Many Touch-A-Tractor visitors helped raise college scholarship funds for the KCFB Foundation through the purchase of tickets in the 2021 Vintage Truck Raffle, featuring a Grand Prize 1972 Chevrolet

C20 Camper Special pick-up truck to be given away in September. The Foundation also announced the 14 students awarded college scholarships for 2021-22, to assist them in pursuing careers in agriculture.

Our June Kane County Farmer will list prize winners, Scholarship winners and the scores of volunteers that make this event possible.

Thanks ALL!

See more Touch-A-Tractor photos on page 8.

KCFB Foundation announces 2021 scholarship recipients

The Kane County Farm Bureau Foundation will award \$18,250 in college scholarships this year to 14 future Ag industry

professionals. After a review of applications, the FOUNDATION Board of Directors has awarded one President's Scholarship, four general agricultural scholarships and one general scholarship. The Foundation also administers the John Buck Memorial scholarships (2), Chuck Swanson Memorial Scholarship, and five scholarships for AGCO; two AGCO Parts Division Scholarships, two AGCO GWN Scholarships and an AGCO Platinum Scholarship.

"This year we had a great pool of candidates for our scholarships," said FOUNDATION Vice President Wayne Schneider. "We at Farm Bureau are certainly proud of the students who plan on going into agriculture related careers. Our county will be well represented in the future!"

As a not-for-profit entity, the Foundation solicits and distributes private funding for scholarship, education and leadership training, Ag-in-the-Classroom

programs, Ag Literacy, charitable activities and research. The Foundation was established in 1989 by the Kane County Farm Bureau to carry out charitable work in the advancement of agricultural literacy and preparing students for careers in the agriculture industry. In its history, it has awarded hundreds of thousands of dollars in college scholarships and internships.

Foundation scholarship applications are submitted by Feb. 15 each year and recipients

are announced in April. Prerequisites and more details on scholarship requirements are available at www.kanecfb.com.

KCFB Foundation scholars will be recognized at a ceremony at a date yet to be determined. The Foundation Board extends congratulations to these young leaders of tomorrow and best wishes in their academic pursuits.

See pages 3 and 6 for photos and bios of the scholarship recipients.

MAY FEATURED FOOD Steakhouse Boneless Pork Chops

This month we're offering special steakhouse boneless marinated pork chops! Each box comes with eight sealed, 8 oz. chops. These special Steakhouse Pork Chops are marinated in a balsamic reduction with mustard seed and just a hint of onion. They are a very popular, high quality meat ready for your grill. The prices for the Steakhouse Boneless Marinated Pork Chops are \$24.09 for PLUS members, \$24.90 for members, and \$28.00 for Non-members. These special pork chops are available while supplies last for the month of May at the Kane County Farm Bureau, Randall Rd. and Oak Street in St. Charles.



As spring planting progresses across Northern Illinois the Kane County Farm Bureau reminds motorists to exercise CAUTION, SLOW DOWN and SHARE THE ROAD with large, slow moving farm equipment traveling between farmsteads and farm fields. A limited number of FREE 3' x 10' banners are available at the Farm Bureau office in St Charles to do just that. They would be great safety reminders to place in farm field corners, at fire stations, banks, township offices and grain elevators in Central and Western Kane County. Banners are available by calling 630-584-8660.

Farm toy of the month

This month's farm toy is perfect for kids that want to horse around. This hobby set is full of equipment to help horse enthusiasts manage their herd, including a John Deere gator, skid steer, Ford F-350 pickup truck with horse trailer and of course, horses. The gator has working dump and skid steer has working loader because there's plenty to haul and hustle on a

horse farm.

Regular price is \$41.72, but during the month of May, visit our Farm Bureau Country Store and Farm Bureau members will save 10%. That's a lotta hay – see you soon!



Planting time

Kane County farmers have taken to the fields and will plant an estimated 90,000 acres of corn and 60,000 acres of soybeans as weather permits. Market conditions are improving following a period where net cash farm income declined by 61%, from 2012 to 2017, according to the 2017 Census of Agriculture (the latest figures available on farm income).

KCFB CALENDAR MAY 2021

4 Salsa Verde GroupRaise – see page 8 for details

13 Board of Directors, 7pm

28 Oberweis/That Burger Joint/Woodgrain Pizzeria Group Raise – see page 8

31 Memorial Day

(All at KCFB, 2N710 Randall Rd., St. Charles unless otherwise noted)

Soil tests enhance spring planting

Kane County Farm Bureau offers soil testing to its members at a discount, a great service to make sure your soil is ready for spring planting. Three different tests available and results are sent by e-mail or mail directly to you. For a soil test form, visit www.kanecfb.com and click on benefits and services, or pick one up at the KCFB office. Deliver samples to Kane County Farm Bureau with payment. Prices listed are for Kane County Farm Bureau members, non-members, and PLUS status members. Ask us how to save even more when you upgrade your membership to a PLUS status.

Call 630-584-8660 for more details.

Why test your soil? Soil in its natural state is rarely fertile enough for the best growth of plants. Usually it is necessary to replenish the earth's store of plant nutrients to obtain the most vigorous lawn, the most abundant and brilliant flowers, the prettiest trees and shrubs and the greatest yield of fresh

veggies.

When is the best time to test soil? Proper sampling is important to obtain accurate results. Samples can be taken any time during the warmer months, when soil temperatures are at least 55 degrees. If the soil is too wet to spade, rototill or hoe, it is generally too wet to take a sample. On the other hand, extremely dry soil should not be sampled either.

How often should I test? Ideally, soil should be tested every 3-5 years, more frequently with intensive use. Try to sample during the same season each time for the best comparison.

Why does Farm Bureau provide this service? Kane County Farm Bureau was founded in 1912 as the Kane County Farm Improvement Association, to help farmers improve their production practices and increase the fertility and productivity of their soil. This program is an extension of that. It helps you take the guess work out of gardening!

Additional help for your lawn & garden is available through the University of Illinois Master Gardeners. Contact them at 630-584-6166 or visit their office at 535 S. Randall Rd., St. Charles.

Soil test costs

Basic PH Test

\$20 per sample for members, \$30 non-members

This test checks for soil pH, phosphorus, and potassium.

Lawn/Garden Test

\$30 per sample for members, \$40 non-members

This test includes the basic test plus organic matter and recommendations on amount and timing of fertilizer.

Lawn/Garden Plus

\$50 per sample for members, \$60 non-members

This test includes the Lawn & Garden test plus nutrients, iron, zinc, manganese, copper, sulfur and boron. This test also includes recommendations.

One NICE truck!

If you've not yet seen the 1972 Chevrolet C20 camper special pick-up truck that the Kane County Farm Bureau Foundation is raffling off this summer to raise funds for col-

lege scholarships, you owe yourself a visit to the office on Randall Road in St Charles to check it out.

This truck is an excellent, rust free example that came from California, and it is obvious from the rust free floor and undercarriage that it is a very recent transplant to the

Midwest that has seen no miles on snow, ice and salt.

The truck is powered by a small block Chevy V-8 with an automatic transmission and is as clean in the engine compartment as it is outside.

Tickets for this truck are just \$15. In quantity, they are 2 for \$25 or 5 for \$50. The winner, to be drawn this September, will definitely conclude it was the best investment he/she ever made!

Get yours today - 630-584-8660 or see the order form on page 8.



KCFB members eligible for John Deere PLATINUM 2 savings

Mark your calendars for BIGGER savings with John Deere Rewards! From May 15-May 31st, John Deere will offer Farm Bureau members a free upgrade to Platinum 2 Rewards savings for 60 days. Sign up for a Rewards account and keep up to \$1000 EXTRA in your pock-

et with BIGGER savings on eligible equipment in the Rewards program. Sign up for a Rewards account and learn more at JohnDeere.com/FarmBureau/

Already a Rewards member through Farm Bureau? John Deere will email directly with a link to access your Platinum 2

upgrade!

Must be a Farm Bureau member for 30 days and have a valid personal email address to be eligible. Sign up for a Rewards account and learn more at JohnDeere.com/FarmBureau



FROM MAY 15 TO MAY 31 ONLY

Farm Bureau® members get **BIGGER** savings with John Deere!



Did you know?

Asparagus is one of the first crops harvested in the spring. It grows wild in areas all around the United States, but is also grown on over 100 farms in Illinois.

Onions are another spring crop. Sulfuric compounds are what bring tears to your eyes when you cut onions. United States farmers plant 125,000 acres of onions each year and produce about 6.2 billion pounds per year.

Also look for leafy greens, such as spinach, kale and lettuce, radishes, peas, rhubarb and strawberries to become available in spring.

Illinois ranks #1 in the nation in soybean production and #2 in corn production.

Illinois is fourth in the nation for number of farmers markets.

A list of farmstands and farmers markets in Kane County can be accessed at bountyofkane.org.

Welcome new members

You receive the *Kane County Farmer* because you are a Farm Bureau member. If you are a farm operator or owner, you benefit from a local, state and national organization committed to agriculture and your way of life.

If you do not have direct ties to farming, your membership helps promote local farms and farming, encourages wise use of our limited natural resources and preserves farmland and our agricultural heritage while allowing you to enjoy COUNTRY insurance and the many benefits of one of Illinois' premier membership organizations.

We appreciate your membership and continued support and we welcome your comments on the content of the *Farmer*. We encourage you to make recommendations about farm, home, food, natural resources, renewable energy or agricultural heritage and history-related topics for inclusion in future issues of the *Farmer*.

KANE COUNTY FARM BUREAU BOARD ATTENDANCE JANUARY 2021 THRU DECEMBER 2021

	JAN	FEB	MAR	APR	MAY	JUN	JULY	AUG	SEP	OCT	NOV	DEC
C. BRADLEY	*	X	X	X								
B. COLLINS	X	X	X	X								
C. COLLINS	X	*	X	X								
J. ENGEL	X	X	^	X								
G. GAITSCH	*	*	*	*								
B. GEHRKE	X	X	X	X								
W. KECK	X	X	X	X								
M. KENYON	X	X	X	X								
K. KETTLEKAMP	X	X	X	X								
D. LEHRER	*	*	*	*								
A. LENKAITIS					*							
N. LONG	*	*	*	*								
D. PITSTICK	X		X	*								
W. SCHNEIDER	X	X	X	X								
J. WHITE	X	X	X	X								

* Attendance by electronic means. ^ Attending IFB Leaders to Washington program.

Kane County Farmer

KANE COUNTY FARM BUREAU PUBLISHED MONTHLY

Steven J. Arnold, Editor

Audre Pack, Bookkeeper

Elizabeth Polovin, Member Services Coordinator

Kelcee Miller, Development & Ag Literacy Program Coordinator

Alice Macha, Communications Coordinator

Sindhu Saveen, Membership Assistant

OFFICE: Randall Rd. between Routes 64 & 38

Address: 2N710 Randall Rd., St. Charles

PHONE: 630-584-8660

info@kanecfb.com www.kanecfb.com

OFFICE HOURS: 8:30-4:30 Monday through Friday

(USPS No. 289700)

POSTMASTER: Send address changes to Kane County Farmer 2N710 Randall Rd., St. Charles, IL 60174

Periodical Postage • Paid to St. Charles, IL 60174

Year Subscription: \$2.00

■ DISTRICT 1
Aurora, Sugar Grove,
Big Rock Twnshp.

Nan Long
11461 E. County Line Rd.
Big Rock, IL 60511
815-693-7214

Donna Lehrer
7S027 Jericho Rd.
Big Rock, IL 60511
630-556-3476

William Keck
P.O. Box 281
Sugar Grove, IL 60554
(630) 466-4030

■ DISTRICT 2
Kaneville, Blackberry,
Gen./Bat. Twnshp.

Bill Collins
1125 Lewis Rd.
Geneva, IL 60134
630-484-6852

Karl Kettelkamp
47W407 Main Street Rd.
Elburn, IL 60119
630-365-2713

Joe White
President
47W727 Main St. Rd.
Elburn, IL 60119
630-878-1726

■ DISTRICT 3
Virgil, Campton,
St. Charles Twnshp.
Andrew Lenkaitis
6N707 Corron Rd.
St. Charles, IL 60175
630-513-9980

Chris Collins
1143 Anderson
Elburn, IL 60119
630-934-4642

Dale Pitstick
2N118 Pouley Rd.
Elburn, IL 60119
630-816-0223

■ DISTRICT 4
Burlington, Plato
Elgin Twnshp.
Beth Gehrke
12N860 US Hwy. 20
Elgin, IL 60124
847-697-2538

Mike Kenyon
Secretary/Treasurer
1250 E. Main St.
South Elgin, IL 60177
847-741-1818

Craig Bradley
37W791 Orchard Lane
Elgin, IL 60124
847-888-2380

■ DISTRICT 5
Hampshire, Rutland,
Dundee Twnshp.

Joe Engel
15N720 Walker Rd.
Hampshire, IL 60140
847-347-5561

Gerald Gaitsch
10613 Brittany Ave.
Huntley, IL 60142
847-669-2003

Wayne Schneider
Vice President
721 Lindsay Lane
West Dundee, IL 60118
847-428-0488

KCFB Foundation announces 2021 scholarship recipients

Elburn senior receives President's Scholarship



The Kane County Farm Bureau Foundation has awarded its \$1,500 President's Scholarship to **Grant Baldrige** (above). This honor is reserved for the high school senior with the most outstanding combination of scholastics, activities, goals, and ACT score. Grant's parents are Eric and Christine Baldrige.

Grant attends Kaneland High School and plans to attend Montana State University in Bozeman, MT. His high school activities include President of the Kaneland FFA Chapter, membership in the National Honors Society and Wrestling. He joined FFA his freshman year in high school and hopes to give back to the organization in the future.

His goal of becoming an agricultural engineer with a focus on computer/electrical components will be greatly helped by this KCFB Foundation President's Scholarship.

Austin and Cook awarded John Buck Memorial Scholarships



Catherine Austin (top), and **Austin Cook** have each been awarded the John Buck Memorial Scholarship for tuition and fees, in support of higher education in an agriculture related field.

2021 marks the 20th year since the scholarship was founded, with scholarships being awarded to students in the seven county service area around the Buck Bros. John Deere dealer-

ship in Hampshire. It is made possible by gifts from the family and friends of the late John Buck, who established the company in 1977.

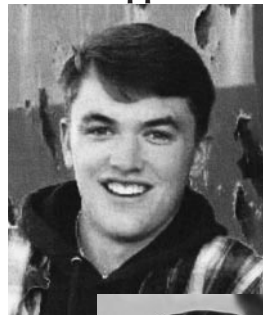
Catherine Austin, daughter of Jeffrey and Linda Austin of Harvard, IL, attends the University of Wisconsin-Platteville with a dual major in Agribusiness and Accounting. She plans to graduate in 2021.

Catherine has been involved in agriculture in various ways including working on her family's farm, participation in 4-H, and working at Dean Foods.

Austin Cook of Malta, IL is the son of Doug and Dawn Cook, graduated DeKalb High School in 2020 and is attending the Hobart Institute of Welding Technology.

He was active in FFA and works part-time for a local farmer. He hopes to start his own welding business and repair farm implements and equipment.

2 AGCO Parts Division Scholarships awarded to Elburn and Sycamore applicants



Jack Yore (top) of Elburn and **Tyler Ekstrom** of Sycamore have been awarded AGCO Parts Division scholarships.

The AGCO Parts Division scholarship was started in 2017 and provides \$1,000 college scholarships annually to students who reside in Illinois and who are pursuing higher education in an agriculture related field. The scholarship is funded by the employees of AGCO Parts, Batavia, IL.

Jack Yore will graduate Kaneland High School this year and plans to attend Montana State University. He is the son of Yancey Yore and Lindsay Freeborn. Jack credits his involvement in FFA and lending a helping hand on his grandfather's Missouri farm with instilling his interest in agriculture.

He hopes his career path will involve an ag-related business through sales or finance.

Tyler Ekstrom, son of Mark and Tracy Ekstrom of Sycamore, graduates Sycamore High School this year and plans to attend Iowa State University and pursue a degree in Agribusiness. His experience in FFA, including involvement in a Supervised Agricultural Experience project, fueled his interest in agriculture.

He hopes to use his Agribusiness degree in a career in agricultural sales.

2 AGCO Global Women's Network Scholarships Awarded



Kyla Baldrige (top) and **Anastasia Kurth** are this year's recipients of AGCO Global Women's Network (GWN) Scholarships.

Kyla Baldrige, daughter of Christine and Eric Baldrige of Elburn, graduated in 2019 from Kaneland High School and is currently attending the University of Wyoming, majoring in Rangeland Ecology and Watershed Management.

She is on the Deans' List at University of Wyoming, and earned her FFA American degree in 2020. She credits her lifelong involvement with agriculture and in her father's landscaping business for inspiring her college path. After graduation, she hopes to work for as a wildlife biologist in the national park system and assist in conservation.

Anastasia Kurth, daughter of Gregory and Regina Kurth of Geneva, graduated in 2018 from Geneva Community High School and is currently a junior at University of Wisconsin-



Platteville, Majoring in Soil and Crop Science and Horticulture.

She is on the Dean's List and Chancellor's List in college, and has placed in American Royal Crops contests. She has also interned at CHS Elburn as a crop scout.

After graduation, she hopes to use here knowledge to improve crop traits through breeding techniques and genetic engineering.

The AGCO GWN Scholarship was started in 2019 and provides a \$1,000 college scholarship annually to each of two female students who reside in Illinois and who are pursuing higher educations in agriculture related fields. The scholarships are funded by the Employees of AGCO Parts in Batavia, IL.

Sophia McComb awarded AGCO Parts Platinum Scholarship



Sophia McComb (above), daughter of Gary and Catherine Hopkins of Sycamore, has been named recipient of the AGCO Parts Platinum Scholarship for \$2,500. This scholarship is awarded to a student who resides in Illinois and who is pursuing higher education in an agriculture related field. The scholarship is funded by the Employees of AGCO Parts in Batavia, IL.

McComb, a 2019 graduate of Sycamore High School, and currently a junior at Cornell University in New York, is pursuing a degree in Applied Economics and Management with a concentration in agriculture development and ag accounting. She is on the dean's list, won a Bausch & Lomb National Science Award and was a James R. Hoffa Memorial International Scholar.

Sophia traces her interest in the financial aspect of agriculture to her early childhood and combine rides with grandfather, as well as responsibilities on her family farm, 4-H participation,

and volunteer stints with the DeKalb County Watershed Program.

After obtaining her degree, she will be excited to pursue a career working in agricultural economic development in third world countries and hopes to create new and better lines of credit for struggling and female farmers.

Swanson Memorial Scholarship awarded to Jessica Dumoulin of Hampshire



The Kane County Farm Bureau Foundation has named **Jessica Dumoulin** (above) of Hampshire as the recipient of the \$1,000 Chuck Swanson Memorial Scholarship. Jessica is the daughter of Pat and Lisa Dumoulin.

Jessica graduates from Hampshire High school this year and plans to attend Elgin Community College.

The Chuck Swanson Memorial Scholarship was established by the family and friends of the former Farm Bureau Director and long-time volunteer to provide awards for students residing in Kane County, pursuing a degree in an agriculture-related career field.



The Chuck Swanson Memorial Scholarship was established by the family and friends of the former Farm Bureau Director and long-time volunteer.

Additional scholarship recipients are listed on page 6.

Congress extends Paycheck Protection application deadline

Congress recently approved Farm Bureau-backed legislation that extends the Paycheck Protection Program application deadline to May 31, helping more farmers and ranchers participate in the loan program, according to the American Farm Bureau Federation.

"The existing March 31 deadline does not allow enough time for newly eligible farmers and ranchers to apply, nor does it adequately account for the required eight-week waiting period between first draw

approval and second draw applications," AFBF President Zippy Duvall said in a letter to House and Senate Small Business Committee leaders in support of the PPP Extension Act of 2021 (H.R. 1799). The measures' sponsors – there were two bills, a House version and a Senate version – were also included in the letter.

The PPP is a low-interest Small Business Administration loan program that helps small businesses keep employees on their payrolls. The SBA forgives

loans if employee retention criteria are met and the funds are used for eligible expenses.

The Consolidated Appropriations Act of 2021, passed in December, contained additional funding for the program, allowed for a second loan and expanded eligibility to self-employed farmers and ranchers who file a Schedule F. More recently, farm and ranch eligibility was further extended to single-member LLCs and qualified joint ventures.

Farming provides millions of American jobs

Some 40% of the world's population works in agriculture, making it the largest employer on the planet. Farming in the United States directly employs more than 2.6 million people.

TRELLIS
Your local source for feed, supplies, and so much more!
Pet Food • Propane
Salt • Delivery
St Charles and Wasco 630-584-2024

AG LITERACY CORNER

By Kelcee Miller, Development & Ag Literacy Program Coordinator



Hello Kane County! I was recently reminded of the power teamwork and community. As many of you know, last month we held our 15th Annual Touch-A-Tractor event at the Kane County Farm Bureau and this was my first BIG event as a member of the team. In the months leading up to our event we did not really know what the event would look like or how things would come together. We just knew that regardless of the circumstances, the show must go on!

After sending out informational letters, countless phone calls, and conversations with staff and board members, we knew this year was going to be different. It was a challenge that we Kane County Farm Bureau folk were ready to take on even if that meant we might have to carry more weight. And just like

COVID taught many of us a year ago, this new challenge forced us to think outside the box in new ways. It allowed us to reflect on how we did things in the past and how we can improve on them now and in the future. It allowed us to have more open conversations, make new connections, form new relationships and gave room for fresh ideas.

No one person could do every single task needed to prepare for an event such as Touch-A-Tractor. It was an all hands on deck, team effort. Much like a big group project in school, we broke up the preparation into small manageable tasks and worked as a team to accomplish them. Without the help of our volunteers, sponsors, FFA students, and members of the community who offered a helping hand, this event would not have

Summer Ag Institute

Teachers in Kane County will have a special and exciting opportunity to tour local farms, meet farmers and earn college graduate two graduate credits from St. Francis University this summer. Kane County Farm Bureau is hosting its Summer Ag Institute beginning July 12th.

The Summer Ag Institute is scheduled for four days, Monday, July 12th - Thursday, July 15th. Teachers in Kane County will have an opportunity to tour local farms, meet farmers in person, and earn college graduate credits from University of St. Francis! Teachers will be able to see how local farms run, agribusinesses and manufacturers work, and get a clear picture of how agriculture affects our daily lives and how agriculture can be easily integrated into the classroom setting.

Kane County Farm Bureau is the gathering point for teachers to board a bus and tour local farms, agri-businesses and manufacturers, where they will get a clear picture of how agriculture

affects our daily lives. The tours will reveal the essentials of research, production, processing, marketing, transportation and retailing that takes food from farm fields to dinner tables. They learn from farmers, growers, experts in various fields and a crew of dedicated volunteers who share their knowledge and enthusiasm for agriculture, while networking with like-minded peers.

Topics will include GMO's, sustainability, organic practices, local foods, global populations and other topics that are current in agriculture today.



KANE COUNTY FARMER

been near as successful!

We knew the cards might be stacked against us as we prepared for our event, but I am blown away at the generosity and kindness of others who jumped at the opportunity to volunteer their time, their equipment, or their beloved farm animals to help us make our event a success. Thank you, Kane County members, friends, and neighbors – without your support this would not have been possible! As the old saying goes, “Teamwork makes the dream work!” And without the collaboration, cooperation, and dedication of all of our team

members, our dream would not have been feasible. Personally, I cannot wait for more events like this in the future and to see magic unfold firsthand.

Don't forget to mark your calendars for our upcoming GroupRaise fundraiser events later this month – yes, there are two opportunities to support Ag literacy, scholarships, and leadership development! Help us celebrate National Salsa Month with our first event on Tuesday, May 4th at Salsa Verde in St. Charles, 1850 Lincoln Highway from 11:00am-9:00pm. During our second event, we will be celebrating National

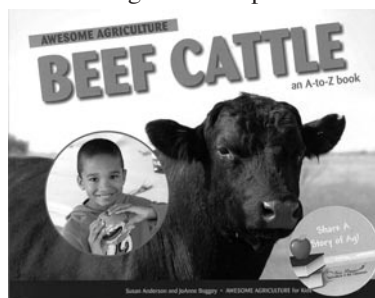
Book of the month

The book of the month for May is *Beef Cattle: an A-Z book*, written by Susan Anderson and illustrated by JoAnne Buggey. Readers will enjoy following their tour guide, little tractor, “Agri-Culture”, as they learn all there is to know about beef cattle.

On each letter page, there is a word that relates to beef cattle, a picture or two to help visualize, and a little snippet from Agriculture on that word. Not only are there pages on beef and the different breeds of beef cattle, there are also pages on the peo-

ple and places that team up to make the industry what it is.

Throughout the book, readers will gain a deeper under-



Beef Cattle – an A-to-Z book by Susan Anderson, illustrated by JoAnne Buggey

Hamburger Month on Friday, May 28th from 11:00am-10:00pm at the new Oberweis, Woodgrain Pizzeria, and That Burger Joint restaurant at 2150 S Randall Rd., Geneva.

Whether you prefer to dine-in, carry-out, or drive-thru, just mention that you are supporting “KCFB Foundation” at check-out and a portion of your sales will go towards Ag Literacy and educational opportunities. I hope you bring your appetites and continue to support KCFB Foundation and our future endeavors!

Happy May!

standing of all the things that go into the business of beef cattle. This includes the consumers, the type of climate that beef cattle need, and where beef cattle are kept and raised.

This intriguing book is available here at the Kane County Farm Bureau office. Come on in and check out *Beef Cattle: an A-Z book*.

The Kane County Farm Bureau Library was made possible by Bob Konen and Dean Dunn, and later supported by the Bob Konen Family.

Helping you protect what matters most



Bob Effner *CFP®, LUTCF*
St. Charles/Elgin
Agency Manager
630-584-0001



Edward Stuehm
Geneva
630-845-8245



Bob Riedel
West Dundee
847-428-5434



Todd Wilcox
St. Charles
630-762-1326



Deb Stob
Geneva
630-208-0890



Gary Bolger
West Dundee
847-531-6110



Bobbi Boston
St. Charles
630-485-5155



Michael O'Brien
Geneva
630-762-0852



Sherri Schramer
Elburn
630-365-9500



Keith Eakins
St. Charles
630-762-1324



Jeff Jones
Geneva
847-989-9989



Dominick Davero
Elburn
630-365-3737



Kelly Landorf
St. Charles
630-762-1328



Victor Alvarado
Elgin
847-742-0003



Chuck Quick
Hampshire
847-683-2100



Donna Tonovitz
St. Charles
630-549-7694



Luke Fawkes
Elgin
847-742-0001



David Berreles
Hampshire
847-683-2100



Orazio Difruscolo
St. Charles
630-549-7696



Sherry Lochen
Elgin
847-742-0001



Dan Cooper
Sugar Grove
630-466-9600



Ashraf Gerges
Aurora
630-898-3750



Bob Kearns
S. Elgin
847-888-3200



Ted Schuster
Sugar Grove
630-466-9600

May

Lessons and Activities Schedule

Theme: Beef
Subtheme: Flowers

April 28th	May Classroom Challenge: Desktop Greenhouse
April 29th	Lesson for the week of May 3rd: Ag-Venture With Beef
May 6th	Virtual Farm Field Trip to Derrer Farms
May 6th	Lesson for the week of May 10th: Throw and Grow
May 7th	Virtual Author Visit: Michelle Houts, <i>The Beef Princess of Practical County</i>
May 12th	Family Engagement Challenge: Planting Time
May 13th	Family Cooking Challenge: Surprise Patty
May 13th	Lesson for the week of May 17th: Ruminant Navigation
May 15th	June PD in Your PJs
May 20th	Lesson for the week of May 24th: Handprint Flower

All activities and lessons will be released on the IAITC Facebook and Instagram pages on their release dates.





Farm Facts @ Fun

Compiled by Kelcee Miller, Ag Literacy Coordinator



June is National Beef Month

5 Reasons to Eat Beef

From steaks to tacos, there are tons of delicious ways to incorporate beef into your meals this month. Why should you opt for beef over other options? We're glad you asked.

Big nutrition, small package

Just one 3 oz. serving of beef provides 10 essential nutrients. When compared to other protein sources, that's a lot of bang for your buck! For example, you'd have to eat at least 8 oz. of cooked chicken breast to get the same amount of iron in just 3 oz. of cooked beef. When comparing zinc, you'd need to eat 20 oz. of cooked chicken breast.

Responsibly raised

Beef farmers are committed to raising cattle in a safe, humane and environmentally sustainable way by using the latest technology and resources. From flying drones to using fewer resources, today's cattle farmers are raising beef more sustainable than ever.

Strength

A balanced diet including high-quality protein and other nutrient-rich foods is an essential component for strength. When it comes to protein, beef smashes the competition. One 3 oz. cooked serving of beef provides roughly 50% of your Daily Value of this important nutrient that supports strong, lean bodies – making it an excellent source!

Heart health

Heart health and taste don't have to be at odds with one another. Recent research from Penn State University shows that eating lean beef as part of a heart-healthy diet can help maintain normal cholesterol levels. Nine extra-lean beef cuts have been certified by the American Heart Association's® Heart-Check program, so you have lots to choose from!

Taste

Last, but certainly not least, beef tastes delicious. Visit www.watchusgrow.org to get recipe ideas that will please the whole family. Originally published at watchusgrow.org.

Beef

S P O R C A P P S Y F I E A T T L Z E P
 U B K M M D T N Z F K H S U X B G A H S
 G E O D N S W U E S X B T N S A B B W N
 G E X Q H C K R K M I O B Y E I M O O I
 O F V M A U H H O R E F H T V V C F R E
 A Q E L T T A C Y U E L P E L F H F U T
 F U L V V U Y I S E N S T S A M I R M O
 L A S H U O F Q B I A D T T C T D L P R
 A L A K B E E F T A C O S V A B D D E P
 N I D E A H R S F B S N O R I C Q K I T
 K T S Y N E H Z R X N N I O L R I S H C
 M Y S A E A T I X L I Q Q A E X K A X N
 B A R T N S S S M T M M O L A H M Z R I
 O S A K N K C Z Q L A I L Y X B P N O Z
 T S W T E E K H M K T O H E U K H S U S
 D U T T M O I S N A I H Q R P W N W K N
 D R Z E Q A G R B R V Z G Y G Y D G F Z
 E A U M N R S A T T B E J I S J P Q P Q
 S N Y Z O O T G R U R W G A I V M Y K L
 R C F A R M E R S S N R O A S T B E E F
 E E V Y O H D Y T Z S M H G S D R E P L

B Vitamins
 Beef
 Beef Tacos
 Beef Quality Assurance (BQA)
 Brisket
 Cattle
 Cattlemen
 Calves
 Cows
 Farmers
 Filet
 Flank
 Hamburgers
 Iron
 Nutrients
 Protein
 Ribs
 Roast Beef
 Round
 Rump
 Shank
 Sirloin
 Steaks
 Zinc

Name _____
 Address _____
 City _____ State _____ Zip _____
 Telephone (____) _____ Email _____ Age _____

Return to: Kane County Farm Bureau, 2N710 Randall Road, St. Charles, IL 60174 by May 15, 2021 to be entered in our drawing for a beef themed prize. Prize must be picked up at the KCFB office within one month of newspaper publication.

Fully loaded burger bowls

Ingredients

- 2 lbs. extra lean beef
- 2.5 teaspoons Lawry's seasoned salt
- 1 teaspoon garlic powder
- 1/2 teaspoon ground black pepper
- 3 teaspoons Worcestershire sauce
- 4 Tbsp butter
- 2 cups sliced mushrooms
- 2 cups of cheddar cheese, shredded, divided
- 10 slices of bacon, cooked and diced
- Diced chives, bacon, BBQ sauce, ranch for topping (optional)

Directions

In a bowl, mix together beef, seasoned salt, garlic powder,

black pepper and Worcestershire sauce.



On a foil lined baking sheet, form 4 meat bowls using a clean

jar or small bowl to create shape – set aside.

In a medium pan, sauté mushrooms with butter. Season with salt and pepper to taste. Divide into 4 equal portions.

Fill each meat bowl with 1/4 cup of cheese, mushrooms, 2 slices worth of diced bacon, and then top with 1/4 cup of cheese.

Loosely cover with foil tent and bake at 350 degrees for 30 minutes.

Prior to serving, top with diced bacon, BBQ sauce, ranch, and diced chives (optional).

Recipe & other delicious options found at: <https://www.familyfresh-meals.com/2018/05/fully-loaded-burger-bowls.html>

Paper plate cow mask

Materials

- Paper plate
- Black, white, and pink construction paper
- Glue or glue stick
- Black or brown paint
- Black marker
- Flat paintbrush
- Googly eyes
- Craft sticks
- Scissors



Directions

Start by painting black or brown cow spots on a paper plate using the flat sponge brush.

Glue down the googly eyes on the paper plate.

Using white construction paper cut out two large cow ears and with the black construction paper cut out two smaller cow ears.

Glue the small black cow ear pieces on the larger white ear pieces and then glue them on the

back of your paper plate.

With pink construction paper, cut out a large snout for your cow and draw a mouth and nostrils on your pink snout with a black marker.

Glue the craft stick to the back of your cow mask and TA-DAAA!! Enjoy your very own paper plate cow mask!

This craft & more ideas may be found at: <https://simplytodaylife.com/click-clack-moo-cows-that-type-cow-paper-plate-mask/>

cattle 'Upcycle' Nutrients

Cattle are beneficial in a sustainable food system because of their unique stomach structure. Their stomach allows them to eat and digest what we as humans can't. In addition to eating grasses, they are able to eat numerous byproducts from food production, such as brewers grains, pea pulp, beet tops, potato peelings and sunflower hulls. Instead of going to a landfill, cattle eat

these "waste" products and turn them into a high-quality protein – meat!



JOKES

What do you call cattle that tell jokes?
Laughing stock!

What sound do you hear when a cow breaks the sound barrier?
Cowboom!

What do you get when you cross an angry sheep and a moody cow?

A baaaaaaad mooooooo!

How did the cow know he was a noble?
He was a Sir Loin!

Congratulations

Molly Farrell of West Chicago is this month's winner. Her name was chosen from the entries received for correctly completing last month's Word Search Puzzle. For her participation, she receives a tech-themed prize. Thank you, Molly, for reading the Kane County Farmer and continue to watch each month for more great opportunities from the Kane County Farm Bureau.

May is ...

<i>National</i>	
Cinco de Mayo	May 5
Coconut Cream Pie Day	May 8
Mother's Day	May 9
Shrimp Day	May 10
Apple Pie Day	May 13
Buttermilk Biscuit Day	May 14
Armed Forces Day	May 15
Chocolate Chip Day	May 15
Walnut Day	May 17
Devil's Food Cake Day	May 19
Endangered Species Day	May 21
Taffy Day	May 23
Asparagus Day	May 24
Brisket Day	May 28
Hamburger Day	May 28
Learn About	
Composting Day	May 29
Memorial Day	May 31
Macaroon Day	May 31

<i>National</i>	
Beef Month	
Skin Cancer Detection & Prevention Month	
Military Appreciation Month	
Barbecue Month	
Egg Month	
Hamburger Month	
Salad Month	
Salsa Month	
Strawberry Month	



**Bring on the Beef
May is
National Beef Month**

The occasion marked the first time my husband's family had dined out together in at least 16 months, and we celebrated the moment of normalcy with beef. The ten of us sat in a semi-private space at a favorite steakhouse, more than six feet from anyone but our waiter. My filet was fantastic, cuttable by butter knife and made even better surrounded by family.

National Beef Month appropriately claims the month of May, when hamburgers and steaks frequent the backyard grill. This American pastime

also shares roots in farm family tradition. The National Beef Checkoff reports 91% of U.S. cattle farms and ranches are owned by families. In Illinois, farmers care for just over 1 million beef cows and calves on almost one-fourth of the state's farms, according to the Illinois Department of Agriculture. In some rural townships, cows outnumber people.

On our farm, the genetics of the small herd of beef cattle trace back to Grandpa's decades as a cattleman. Hedge posts harvested from the farm frame the pasture fence, and we paid the local FFA chapter to build the feed bunks in the cattle lots. Some of our farm's favorite photos have come from sunset's glow on the pasture or the cattle shading themselves under the big burr oak. Cattle live in tandem with the environment, from co-existence with wildlife to the carbon sequestration of managed grazing on land unsuitable for growing food crops.

For generations, our farm-

raised beef has taken prominent space in the chest-style freezers at family and employee homes. The practice of freezing a year's worth of beef moved mainstream during the pandemic. Many local meat processors, including ours, are so booked with work that our farm for the first time scheduled custom beef processing more than 18 months in advance for unborn animals.

Absent a social calendar for much of a year, our household commonly prepared beef for dinner. Beef tacos, smoked pulled beef, burgers, beef stew and roast beef dinners brought us around the table. I look forward to the summer meals, when we can throw a steak on the grill and cook some garden veggies for a simple, nutritious meal with protein, iron, zinc and B vitamins from the main course alone.

About the author: Joanie Stiers' family grows corn, soybeans and hay and raises beef cattle and backyard chickens in West-Central Illinois.

KCFB Foundation scholarships awarded

\$1,250 KCFB FOUNDATION Ag Scholarships



Mitchell Majewski of St. Charles, son of Mark and Amy Majewski, is a freshman attending Western Illinois University, pursuing a degree in Ag Business. He graduated St. Charles East High School in 2020, where he was team captain of the football and lacrosse teams. He credits his work on a row crop and dairy farm and knowledge of welding with fueling his desire to start his own row crop operation in the future.

North High School in 2019 and is in her junior year at Colorado State University, pursuing a degree in Mechanical Engineering. She is a Walter Scott Jr. College of Engineering Scott Scholar and Illinois State Scholar. She plans to pursue engine research with a focus on alternative fuels after graduation.



Shelby Hannula, daughter of Jim and Laurie Hannula of Elburn, will be a senior this fall at Illinois State University, majoring in Agriculture Business. She graduated 2019 from Kaneland High School. She was involved in FFA in high school and in campus outreach in college. Upon graduation, she wants to pursue a career with a company that produces and distributes livestock.

\$1,000 KCFB General Scholarship



Evelyn Schmitz of Batavia, daughter of Anthony and Jennifer Schmitz, is a 2021 graduate of Batavia High School and will be attending Ball State University, majoring in Audio Engineering. Her high school experience includes the Batavia Marching Band, Show Choir Combo, Batavia Jazz Ensemble, student council, National Honor Society and National Spanish Honor Society. Evelyn's college goal is to become an accomplished musician in the field of audio engineering with an eye to working in a recording studio or music marketing.

See additional scholarship winners on page 3.



Lauren Arbir of St. Charles, daughter of Christopher and Elizabeth Arbir, is a 2019 graduate of St. Charles North High School and currently attends University of Missouri, majoring in Environmental Science and Sustainability. She recognizes the indispensable aspect of agriculture in fostering her goal to meet present ag needs without compromising the ability of future generations to meet their own needs.



Katie Dunteman, daughter of Robert and Kelley Dunteman of Elburn, graduated St. Charles

Welcome to the next level

This month we welcome the following KCFB members who joined our organization or reclassified their membership in August to *Regular or Professional Status:

Regular Members

- | | |
|--------------------------|------------------|
| Stephen Anderson | Geneva |
| Kristine Conley | Elburn |
| Jones Family Farm | |
| Partnership | Hampshire |
| Diane Meredith | Humble |
| Benjamin Link | Batavia |

We remind you of added perks that accompany your new Regular member or Professional Status and thank you for supporting KCFB's efforts at advocacy,

education and hunger relief:

- Professional networking opportunities & engagement with farmers
- Agriculture, farm & food news delivered to your door
- New subscription to *FarmWeek*, the largest weekly agriculture newspaper
- Access to *FarmWeekNow.com*
- KCFB voting rights & ILFB delegate opportunities
- Continuing subscription to the *Kane County Farmer* newspaper
- Free annual registration at one of 7 statewide conferences
- 302,000 member discounts, including Ford, Lincoln, John

- Deere, Case IH, restaurants, hotels & travel
- Discounts at the KCFB Country Store on in-house sales of featured local foods

**KCFB Regular membership is required of all who join our association that have a vested interest in and receive income from the production of farm products as an owner or operator of a farm business. Professional Membership status is available for all those employed in agriculture-related occupations, even with no farm income. If you are interested in "next level" membership and the benefits it carries, please contact KCFB in St. Charles at (630) 584-8660.*

Don't be a statistic KCFB offers FREE grain bin safety stickers

Farmers everywhere know that a whole lot of grain went into storage in the fall of 2020 in less than ideal conditions. The tragic results in loss of life have played out on social media, in agricultural news and through local news stories in rural areas across the Midwest already this year.

Grain Safety Week was April 13-17, but Kane County Farm Bureau is still working to raise awareness about grain handling and storage hazards. We want to help provide education and training, and convey best safety practices for farmers and grain

handlers.

To assist in promoting grain safety awareness, Kane County



Farm Bureau has FREE Grain Bin Warning decals available to area farmers. The die-cut decals are 12 x 12 inches and are over-

laminated vinyl for outdoor use. The decal lists prudent grain safety procedure.

Farm families wishing to get stickers can stop by Kane County Farm Bureau or call us at 630-584-8660.

BE SAFE!

Grain entrapment statistics for 2019

In 2019, 38 grain entrapment incidents were reported (27% increase from 2018). 61% of those were fatal. Many more incidents remain unreported each year. (Source: Purdue University) Grain entrapments were reported in 14 states in 2019. 82% of all grain entrapment cases occurred in the Midwest, or Corn Belt.



We offer wet hosing, bulk tank fills and package lubricants – D.E.F, Oil, Hydraulic, Diesel and Gas for all your needs.

We are a 24/7 Fuel Supplier servicing Illinois – Wisconsin – Indiana
Call us today at 847-994-3010 or visit us online at www.luckysenergy.com
Growing To Serve You Better

CHICKEN TENDERS ... AND TENDER CHICKENS

By Alice Macha



I enjoy animals and don't consider my life complete without a pet. I'm a seasoned cat owner

and am pretty good at taking care of cats, pet birds and dogs. Recently I had to step outside

Recruiter of the Month

Each month we honor the person who signs the most members into our organization. This month, the honor goes to Greg LeBeau!



Greg has been a COUNTRY Financial Representative since

Greg LeBeau

October 1987. His office is located at 1921 Wilson St., Batavia and may be reached at 630-907-0870.

Thank you for your continued support of the Kane County Farm Bureau and congratulations on your success!

What's new in the COUNTRY agencies?

St. Charles Agency, Bob Effner, Agency Manager

Kelly Landorf has been named the Agent of the Month for March 2021 in the St. Charles/Elgin Agency, as announced by Agency Manager, Robert J. Effner, Sr., CLF®, LUTCF. Kelly has provided tangible plans for addressing the immediate and long term insurance needs of her clients through COUNTRY Financial's diverse products and services: Auto, Farm, Home, Life, Business, Retirement. Let Kelly's expertise help you! You may reach Kelly at 630-762-1328, kelly.landorf@countryfinancial.com, or <https://representatives.country>

financial.com/kelly.landorf/. Congratulations Kelly!

Aurora Agency, Alonzo Nevarez, Agency Manager

Greg LeBeau, Financial Representative with the Aurora Agency, is our Financial Representative of the Month for March 2021. Greg began his career with COUNTRY Financial in October of 1987 and services clients out of his office located at: 1920 Wilson Street, Batavia, 60510, (630) 406-6900. Greg's professionalism and vast knowledge of auto, home, life, and commercial products make him a great person to do business with. Congratulations, Greg.

KANE COUNTY FARMER

my critter comfort zone and take a crash course in caring for baby chickens. KCFB wanted chicks for children to experience during Touch-A-Tractor. I get it – a wee baby chicken is the world's cutest creature and kids flock to them (a chick magnet!).

So began my odyssey of hunting and pecking info about fertilized eggs, incubators, live chicks, purchasing live chicks, chick bedding, chick feed, chick heat sources, and all the other minutiae that goes into caring for peeping, cheeping chicklets.

We found chicks from two different sources. The stars of the chick parade were a half dozen, five day old, preciously peeping ISA Brown chicks. These soft little butterscotch colored puffs emitted peeps that stopped excited kids in their tracks and elicited "Ooh's" and

"Aah's" and "Look – a chick – can I pet it?" comments from kids and adults alike. Each chick took the stage in a short stint and was gently presented to Touch-A-Tractor visitors in a supervised meeting, before it was returned to its siblings and another chick was presented. All visitors were welcome to gently touch the head of the chick on duty and experience the downy softness and warmth. The ISA Browns were a big hit!

We also had 11 gangly, 4 week old Black Star chicks. These scrappy little bundles were long-legged and had lost their soft down in favor of a scruffy mix of fluff and feathers. Black Stars grow up to be excellent, brown egg-laying chickens that weigh in at 5 pounds and are classified as "egg laying machines." Visitors were fascinated by the difference in size,

feathering and demeanor between 1-week and 4-week old chicks.

The chicks needed daycare – a heat source; comfortable, absorbent bedding; quality, nutritious food; fresh water and "people" to watch over them, check their comfort level, check for signs of illness, and clean up after them. Thankfully a team of FFA volunteers kept an eye on all the livestock and the chicks fared well during their Touch-A-Tractor stint.

At the end of Touch-A-Tractor, our little chicks exited their starring role stage right and were taken in by a KCFB member-farmer who promised them a good home on the family farm. Oh, they grow up so fast.

It was fun and fascinating for me to learn a little about chickens and their care. I have a new-found respect for farmers, who tend all the living things on their farm with care and dedication. I also have a new-found respect for hens, who make it all look so easy! As for the chicks ... I hope they write (or tweet) once in a while.



Shop, Smile—support KCFB Foundation

Shop on AmazonSmile and support KCFB Foundation at the same time? It sounds too good to be true! AmazonSmile is a simple way for you to support your favorite charitable organization every time you shop, at no cost to you. AmazonSmile is available at smile.amazon.com on your web browser and can be activated in the Amazon Shopping app for iOS and Android phones. When you shop at AmazonSmile, you'll find the exact same low

prices, vast selection and convenient shopping experience as Amazon.com, with the extra bonus that AmazonSmile will donate 0.5% of your eligible purchases to the Kane County Farm Bureau Foundation.

Step by step instructions:

1. Click the following link: <https://smile.amazon.com/ch/36-3691384>
2. Click the yellow "Start shopping" box
3. Sign in using your Amazon

log-in info

4. Begin shopping!

To verify that you've followed the steps properly, at the check-out portion of your purchase there will be a box stating, "Supporting Kane County Farm Bureau Foundation." You will also see on various items that it will say, "Eligible for AmazonSmile donation."



CLASSIFIED ADS

CLASSIFIED AD RATES

Classified advertising rates: 20 cents per word/\$20 minimum (60 words or less). DISCOUNTS for members: Associate members, 20%; Voting members, 30%; PLUS members, 40%. Advance payment requested. Ads due by the 15th of every month for the next issue. No advertising (classified or display) for financial or insurance services will be accepted. Call 630-584-8660.

HELP WANTED

Jim Verhaeghe & Sons, Inc. – Tree removal, tree trimming, & stump grinding. Backhoe work & Tile Lines. Fully insured – Free Estimates – Jim Verhaeghe Sr. Call: 847 334 5730

WANTED

Farm employee, some experience necessary, FT & PT or both. CDL helpful. Call: 630-951-9238.

Want to buy vintage & used tools. Also, we do cleanouts. Call Chris – 630 550 7182

FOR SALE

2 Minnesota bale kicker wagons on John Deere gears, 9x16; 2 E-Z Trail kicker wagons on easy trail gears, 9x16; 1 Allied 40 ft bale elevator on transport; 1 Allied 36 ft bale elevator, new motor; Went to Bale Band-it system. Call: 847-436-2538



SEASON'S EATINGS												
Wondering when a certain type of produce will be making its way from the field to your local farmers market or grocery store? Save this graphic for quick reference of when your favorite fruits and vegetables will be in season!												
PRODUCT	JAN	FEB	MAR	APR	MAY	JUN	JUL	AUG	SEP	OCT	NOV	DEC
Apples						J	J	A	S	O	N	
Artichokes							J	A				
Asparagus				A	M	J						
Beans						J	J	A				
Bell Peppers							J	A	S	O	N	
Berries						J	J	A	S			
Cabbage					M	J	J		S	O	N	
Carrots						J	J	A	S			
Cauliflower								A	S	O		
Cherries					M	J	J					
Corn							J	A	S	O		
Cucumbers								A	S	O		
Eggplant						J	J	A	S	O		
Garlic						J	J	A	S	O	N	
Grapes							J	A	S	O		
Greens					M					O	N	
Herbs								A	S	O		
Horseradish						J	J	A	S	O	N	
Leeks					M	J	J	A				
Lettuce				A	M	J		A	S	O		
Melons						J	J	A	S			
Nectarines						J	J	A	S			
Okra						J	J	A	S	O		
Onions				A	M	J	J	A	S	O	N	
Peaches						J	J	A	S			
Peas				A	M	J	J	A	S	O	N	
Plums						J	J	A	S	O		
Potatoes						J	J	A	S	O	N	
Pumpkins								A	S	O	N	
Radishes					M	J	J	A	S	O		
Rhubarb					M	J	J	A	S	O		
Spinach				A	M	J			S	O	N	
Sprouts					M							
Squash					M	J	J	A	S	O	N	
Strawberries					M	J						
Sweet Potatoes								A	S	O	N	
Tomatoes						J	J	A	S	O		
Turnips						J	J	A	S	O		



Farmers are hard at work producing food!

Here are some "Season's Eatings" to look forward to as the spring and summer progress! *And, the first 100 people to visit KCFB can receive a free 5x7 refrigerator magnet of this quick reference "Season's Eatings" chart.* Enjoy all of the produce Illinois Farmers have to offer!



Recycle Scrap for CASH

Steel, Copper, Aluminum & Cars

Trucking & Dumpster Service Available

"Helping to keep America Picked up for 45 years"

Zimmerman Recycling, Inc.
301 Industrial Drive, DeKalb
(815) 756.8600

Scenes from Touch-A-Tractor

1. More than a dozen FFA members from the Central, Kaneland and Hinckley-Big Rock FFA Chapters assisted the Farm Bureau Foundation in presenting Touch-A-Tractor to the public. In addition to supervising activities for kids, welcoming guests to the event and serving lunch or popcorn, the students help beautify the grounds by edging and planting hundreds of flowering perennials around the score of oak trees on the Farm Bureau lawn.

2 and 3. Farm animals including this ISA Brown baby chick and this Holstein calf are always a draw for children. Many were surprised to learn that both of these farm animals, the 2-3 ounce chick and the 100+ pound calf, were both one week old.

4. Touch-A-Tractor volunteer Dan Kocher of St Charles explains the process of starting his Allis-Chalmers model B tractor to a young visitor at the event. Kocher placed many of the children at the event on the seat of the tractor before starting it (with appropriate safety precautions) with a hand crank! That kind of dedication to putting smiles on the faces of children is what makes Touch-A-Tractor memorable for the kids and rewarding for the many volunteers like Kocher who assist the Farm Bureau with the event each year.



See the full story on page 1

Stepping on stepped-up basis has big consequences

By Mark Stebnicki, North Carolina Farm Bureau

Any change in capital gains tax policy that eliminates or scales back stepped-up basis could result in a massive tax burden on the agricultural sector according to new analysis by the American Soybean Association and the American Farm Bureau Federation.

To minimize the impact of burdensome capital gains taxes, farmers and ranchers use stepped-up basis, which provides a reset for the asset value during intergenerational transfers. The magnitude of the tax burden that would be felt if basis is taken away or reduced would likely significantly exceed the annual income gen-

erated by the assets, something that has soy and other American farmers concerned.

Kevin Scott, soybean farmer from Valley Springs, South Dakota, and president of ASA said, "What people may not realize is that it could take years of returns to equal the amount of the tax if stepped-up basis is reduced, or worse, eliminated. If we inherit farmland without the step-up to level the playing field for paying capital gains, there is a significant cost to sell the land, which throws off the market for not just farmers but for everyone."

"The value of farms is tied up in land and equipment, and many hardworking farmers struggle just to make ends meet," said AFBF President Zippy Duvall.

"Eliminating stepped-up basis would make passing the family farm to the next generation much more difficult when the capital gains taxes would exceed a farm's net income in many cases and require years to pay-off. We urge lawmakers to leave stepped-up basis intact to ensure farmers can continue feeding America's families."

Scott Gerlt, ASA economist, and John Newton, Farm Bureau chief economist, explain in a joint article that heirs facing higher taxes would incur steep costs after bringing the land to market, thereby increasing costs for everyone else in the marketplace. And, if an estate is passed on with debt, it may not be possible for the family to meet the

tax obligation. Gerlt and Newton in their analysis offer perspective across the U.S. and give real examples of the damage stepped-up basis changes could cause. Bottom line:

Eliminating stepped-up basis to generate more federal income risks the livelihood of America's family farms and the economic sustainability of these family operations long into the future.

Vintage truck = fun ride

The grand prize winner in the annual raffle will be drawn in September, 2021. The winning ticket will take home a 1972 Chevrolet C-20 camper special pickup truck. Second prize is \$500 in groceries and third prize \$500 in fuel.

Tickets are \$15 each, 2 for \$25 or 5 for \$50 and are available at Kane County Farm Bureau (2N710 Randall Road, St. Charles), from the Farm Bureau directors listed on page 2, with VISA or MasterCard at 630-584-8660, or by sending payment with the ticket request form below.

In 2019-20, over \$22,500 in

tuition assistance was provided by the Foundation. For 2021-22, the KCFB Foundation has already approved \$18,000 in Scholarships. Your contributions through the annual raffle and other events throughout the year play a huge role in helping students attain their degrees, reach their goals, and assist in securing a bright future for farms and food.

For more information and rules on this year's raffle, scholarship programs or other KCFB Foundation programs and services, visit www.kanecfb.com or contact Steve Arnold at 630-584-8660.

FUNdraising in a fun, flavorful way

Join us and support the KCFB Foundation in two tasty ways this month.

GroupRaise is a takeout fundraiser that encourages members of the community to order food from a local restaurant on a specific date and time to support a particular group or cause. Not only does the group raise funds and awareness for their cause, but the hosting restaurant benefits too from the increased traffic. GroupRaise allows a portion of the total sales to be donated directly to the group or cause. Kane County Farm Bureau FOUNDATION is excited to announce not just 1, but 2 fundraising opportunities this month!

Celebrate National Salsa Month, Taco Tuesday, and Cinco de Mayo on **Tuesday, May 4th at Salsa Verde at 1850 Lincoln Highway, St. Charles, from 11:00am - 9:00pm.**

The second event, celebrates National Beef Month and National Hamburger month on **Friday, May 28th from 11:00 am - 10:00pm at Oberweis/That Burger Joint/**

Woodgrain Pizzeria at 2150 S. Randall Rd., Geneva.

Both require a minimum group to RSVP to "Commit to Eat" on our Meal Page, other-



Open the camera app on your smart phone and point camera at QR Code so it's clearly visible on screen. Tap screen to be taken to the KCFB Foundation linked page that pops up at the top of the screen and tap the COMMIT TO EAT button on screen.

wise our event will be canceled. We hope you bring your appetite, family, and friends and join us in celebrating fun national holidays, good food, and a good cause! Follow us on Facebook for links and information regarding our upcoming events.

Commit to Eat at Salsa Verde on Tuesday, May 4th from 11:00am-9:00pm here: <https://www.groupraise.com/>

events/179785-kcfb-foundation-at-salsa-verde

Commit to Eat at Oberweis on Friday, May 28th from 11:00am-10:00pm here: <https://www.groupraise.com/>

www.groupraise.com/events/179311-kcfb-foundation-at-oberweis

One more thing – and the most important – please make sure when purchasing your meal, mention that you are supporting KCFB FOUNDATION at check-out so we can receive your donation percentage! Thank you!



Vintage Truck Raffle KCFB Foundation

Please send me _____ tickets (\$15 each, 2 for \$25 or 5 for \$50)

Name _____

Address _____

City, State, Zip _____

Email _____

Phone (_____) _____

Return with check made payable to Kane County Farm Bureau Foundation, 2N710 Randall Rd., St. Charles, IL 60174 or charge my:

Visa MC # _____ Exp ____ / ____

Signature _____ Date ____ / ____ / ____