

# Kane County Farmer



**KANE COUNTY  
FARM BUREAU®**  
Farm. Family. Food.™

*Enhance the quality of life for member families;  
Promote agriculture, farms & food; and,  
Advocate good stewardship of our land and resources.*

VOL. 85 NO. 11 NOVEMBER 2020

## Local teacher receives IFB Ag Education teacher grant

A September 22nd KCFB Foundation presentation of a \$500 FFA chapter grant to Central Burlington High School in Hampshire turned into a surprise acknowledgement and reward for Katlyn Post, second year agriculture teacher at the school. During the presentation, Susan Moore, director of the IAA Foundation, presented Post with a \$10,000 award and announced that she is one of four Ag Ed Teacher Grant recipients statewide. Each recipient was selected based on classroom efforts, as well as strong short- and long-term personal and program goals.

"It's so great to get the students and the community involved in recognizing their new ag teacher," said Moore, director of the IAA Foundation, the charitable arm of Illinois Farm Bureau. "It's just one more way to reinforce that the agriculture community stands behind our educators."

IFB provided seed money to start the grant program, and the IAA Foundation is administering it while seeking more funding partners. The goal is to fund 32 teachers over 12 years.

Demand for agriculture teachers in Illinois outpaces supply as more schools recognize the importance of agriculture programs to student education. During the last five years, Illinois schools posted an average of 81 ag teacher openings annually, with only 24 Illinois graduates per year to fill them.

Illinois Farm Bureau has recognized this situation and in 2017, instituted the IFB's Agricultural Education Teacher Grant Program. IFB founded the program to boost personal

income for new agriculture instructors, thus far granting 16 teachers up to \$10,000 in their first five years of teaching agri-



*Katlyn Post was named one of four Illinois teachers as an Ag Ed Teacher Grant Recipient by the IAA Foundation on September 22. In a surprise ceremony with students and faculty from Central Burlington High School and Kane County Farm Bureau on hand. Susan Moore, Director of the IAA Foundation (Illinois Farm Bureau's charitable and educational Foundation) thanked Post for choosing to be an Ag Teacher, for doing great things for students, and provided a \$10,000 incentive to continue on her career path.*

culture.

The Farm Bureau accepts up to four new teachers per year for the grant, which incrementally increases over five years for a total of \$10,000. The grants help acknowledge the teacher's commitment to agriculture education and help publicize the profession, increase the teacher's salary and help get more students in agriculture.

The four recipients for 2020 are:

**Katlyn Post**, Central Burlington High School, Burlington; **Aaron Slack**, Paxton Buckley Loda High

School, Paxton; **Harley Carlson**, Central Community High School, Breese; and **Jerry Brockett**, Meridian High School, Macon.

Katlyn Post instructs students with farming backgrounds as well as more urban minded students as one of three agriculture teachers at Central Burlington High School. The school is home to one of the state's premier animal and veterinary science technology programs.

Jerry Brockett not only is starting his second year of teaching, but also his high school's second year of offering students classes in agriculture. Last year as a first-year teacher launching a new program, Brockett offered three sections of introduction to agriculture along with basic animal and plant science classes and an agriculture business class that also fulfilled a consumer education requirement.

Aaron Slack returned to teach at his alma mater and to expand the agriculture education department to three teachers after the ag program "absorbed" the school's industrial arts program, he explained. Today students are offered similar industrial tech classes "with an ag twist." Admitting he was "quite emotional" when he was surprised to receive a grant, Slack described the grant as recognition of his hard work and that it "makes me

want to stay in teaching."

Harley Carlson and her students at Central Community High School are testing water nutrients and their impact on plant growth. She would like to create an FFA Alumni chapter.

"Agriculture teachers are motivating and inspiring people to choose agriculture as a career," said Moore. "This is a way to create that incentive and show the ag community is behind them."

While many high schools employ full-time agriculture teachers, Illinois Ag in the Classroom (IAITC) provides ag lessons tailored to grade levels pre-K through 12. These lessons are engaging and entertaining for anyone with an interest in agriculture.

Kane County Farm Bureau's Development and Ag Literacy Program Coordinator, Kelcee Miller, coordinates between local schools, teachers and the classroom ready materials that are available through IAITC. These materials align with state learning standards and include the popular Illinois Ag Mags covering topics ranging from apples, beef, corn, pumpkins, pizza and more.

Check in at [agintheclassroom.org](http://agintheclassroom.org) for more information or call Kelcee at 630-584-8660.

## American Farm Bureau's 102nd convention goes virtual

The American Farm Bureau Federation announced in mid-October that its 102nd Annual Convention will be held online following the cancellation of all events through Jan. 31, 2021, at the San Diego Convention Center where the convention was scheduled to take place.

"Our top priority at every Farm Bureau gathering is the safety of our attendees and staff," AFBF President Zippy Duvall said. "While we are saddened to not meet in person for this convention, we are eager to bring this event safely to farm and ranch homes across the

country and excited to offer the same top-level content our members have come to expect from our in-person events."

The 2021 American Farm Bureau Virtual Convention, to be held Jan. 10-13, 2021, will bring together farmers, ranchers and industry experts to discuss the top issues facing agriculture, including the impact of COVID-19, sustainability and the future of the supply chain, and will feature keynote speakers who inspire and motivate grassroots action. This free online event will bring home American Farm Bureau Convention favorites from the Ag Innovation Challenge and YF&R competitions to the Ag

Foundation Book of the Year and the anticipated Farm Dog of the Year.

"Our convention theme this year is 'Stronger Together,'" Duvall said. "I can think of nothing more fitting to spotlight how the agriculture community has come together to keep growing the products our nation depends on while supporting our friends and neighbors throughout this public health crisis."

Registration for the 2021 American Farm Bureau Virtual Convention will open later this year and will be free to all attendees. Further details on the event will be provided in the December *Kane County Farmer*.

## Illinois 2020 harvest progress



A familiar sight in area corn and soybean fields in recent weeks, combines like these started rolling in earnest in Kane County fields in late September-early October. According to the National Ag Statistics Service, crop conditions and crop progress compared very favorably to 2019 and years prior. The figures below are based on the October 13 crop report for Illinois.

Illinois Crop Progress	2020	2019
Corn harvested	45%	76%
Soybeans harvested	56%	22%
Illinois Crop Conditions	2020	2019
Corn - good to excellent	68%	44%
Soybeans - good to excellent	66%	43%

### KCFB CALENDAR

#### NOVEMBER 2020

- 3 Election Day
- 11 Veteran's Day
- 19 County Board Ag Committee, 10am
- 12 Board of Directors, 7:00pm
- 24 Christmas Trees arrive!  
HOKA turkey pick up, noon-5:00pm
- 26 Thanksgiving, office closed
- 27 Office closed

*Happy Thanksgiving!*

## November featured special - FRESH HOKA TURKEYS Regular or smoked whole turkeys

In honor of Thanksgiving, our featured item for November is fresh HOKA turkeys. HOKA turkeys are locally raised in near-by Waterman, IL at Howard Kauffman Turkey Farm. Turkeys are individually wrapped, fresh and never frozen, and new for 2020, we have added a smoked turkey option. Order yours by Thursday, November 19, by calling Kane County Farm Bureau at (630) 584-8660 or use the order form on page 8. Pick-up is at Kane County Farm Bureau on Tuesday, November 24, from 12-5:00pm.

# Legislators receive recognition from IFB/ACTIVATOR

Right: Kane County Farm Bureau Director Mike Kenyon (left) presented the Illinois Farm Bureau ACTIVATOR Friend of Agriculture award to State Senator Don DeWitte on October 2nd at KCFB's Centennial Grove. Senator DeWitte received the award for his voting record and support of agriculture and farm issues in the Illinois General Assembly.



KCFB Directors Beth Gehrke (L) and Craig Bradley (R), are joined by Carolyn Gehrke as they present the ACTIVATOR FOA award to State Representative Dan Ugaste at the Gehrke family farm in Elgin. Representative Ugaste was recognized for his voting record in support of agriculture at the farm on September 25th.

## Save time and renew online!

It's easy to make sure your Farm Bureau Membership is current. The Illinois Farm Bureau provides many services to all Kane County Farm Bureau members, for example, online membership renewal through their website.

Did you know you can renew your Farm Bureau membership online? You can also view your payment history, print a lost or updated membership card, and update your account information including address, spouse/

dependents, phone and e-mail all through the Member Center of the website.

To do this, simply visit [www.ilfb.org](http://www.ilfb.org). Click on the Membership tab at the top, and then Renew your membership. You will be asked to register using your Farm Bureau number and to create a username and password.

The ability to check your membership information anytime, anywhere can help prevent unwanted Farm Bureau mem-

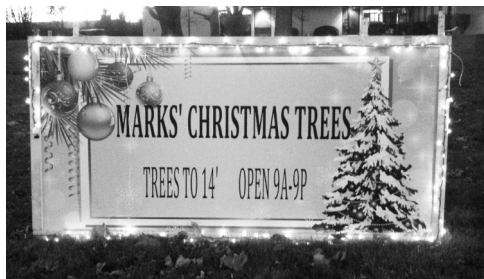
bership late fees and keep you eligible for COUNTRY Mutual and COUNTRY Preferred insurance coverages. Don't delay, check to make sure your information is updated today!

**REMINDER:** Regular (voting) and Professional Members are due for renewal in September. Associate members' renewal dates vary, please sign on to the website or call the Kane County Farm Bureau at (630) 584-8660 to check on the status of your membership.

## Xmas tree discount for KCFB members

Marks' Tree Farm, which has been doing business in St. Charles for three decades, will again establish a Christmas tree lot at the Kane County Farm Bureau between Thanksgiving and Christmas Eve. Marks' provides quality, fresh cut Fraser Fir, Balsam Fir, Spruce and White Pines grown on their farm in Northern Wisconsin. They are also happy to offer ever-

green wreaths and crosses, perfect for doors or walls that need a little "sprucing" up!



Kane County Farm Bureau more!

members will receive a \$10.00 discount on all trees on the lot. We hope you take advantage of this convenient and money saving member service.

And, while you are at the Farm Bureau, stop inside for holiday gift ideas including farm toys, puzzles, branded apparel, and a selection of local meats, honey, BBQ sauces, and much, much

## South Elgin master gardener volunteer earns state honor

Colleen Haas of South Elgin has earned a 2020 State Outstanding Master Gardener Award.

The State Outstanding State Award recognizes the best of University of Illinois Extension Master Gardeners. Only 1 to 2 percent of active Master Gardeners are honored annually.

"Nominated Master Gardeners must demonstrate leadership, initiative and follow-through; collaborate well with other volunteers or organizations; and keep up with continuing education," said local Master Gardener program coordinator Sarah Fellerer. "Both of these individuals bring energy and passion to their local volunteer teams and projects, and they deserve to be honored for their dedication to helping others."

In lieu of a ceremony at the annual Master Gardener conference this year, award recipients were honored with a commemorative yard sign, flowers, and a certificate sent to their homes.

A Master Gardener since 2013, Colleen Haas has given

more than 550 hours to helping others learn to grow through her volunteer efforts.

"She empowers both the novice and experienced gardeners to master new knowledge and skills each season in the garden," said fellow Master Gardener Patsy Hirsch, who works closely with her at the Sherman Hospital Natural Prairie and Community Garden.

Colleen has been active for seven years with the Sherman Hospital Community Garden project, a 50-bed educational set amidst an 80-acre restored prairie. With this experience,

she initiated the group's Community Garden Advisor (CGA) program. CGAs go on-site to help others navigate through starting a community garden and/or advise existing gardens, and they have since impacted several other local gardens including the Housing Authority of Elgin.

She also started a "Gardenside Chat" series and the Sherman Community Garden online resource center, and brought experts in food preservation, beekeeping and other topics to share knowledge with community gardeners.

## Farm Bureau 2021 calendar gifts to members

In appreciation of our Kane County Farm Bureau members, we will soon have 2021 wall calendars featuring antique tractors or barns. Pick up your FREE calendar at our St. Charles office while supplies last.

For many, 2021 can't come soon enough!



Welcome new members

You receive the Kane County Farmer because you are a Farm Bureau member. If you are a farm operator or owner, you benefit from a local, state and national organization committed to agriculture and your way of life.

If you do not have direct ties to farming, your membership helps promote local farms and farming, encourages wise use of our limited natural resources and preserves farmland and our agricultural heritage while allowing you to enjoy COUNTRY insurance and the many benefits of one of Illinois' premier membership organizations.

We appreciate your membership and continued support and we welcome your comments on the content of the Farmer. We encourage you to make recommendations about farm, home, food, natural resources, renewable energy or agricultural heritage and history-related topics for inclusion in future issues of the Farmer.

### KANE COUNTY FARM BUREAU BOARD ATTENDANCE JANUARY 2020 THRU DECEMBER 2020

	JAN	FEB	MAR	APR	MAY	JUN	JULY	AUG	SEP	OCT	NOV	DEC
C. BRADLEY	X	X	X	*	*	X	X	X	*	X		
B. COLLINS	X	X	X	*	*	X	X	X	X	X		
C. COLLINS	X	X	X	*	*	X	X	X	X	X		
J. ENGEL	X	X	^	*	X	X		X	X	X		
G. GAITSCH	X	X	X	*	*	X	X	X	X	X		
B. GEHRKE	X	X	X	*	X	X	X	X	X	X		
W. KECK	X	X	X	*	X	X	X	X	X	X		
M. KENYON	X	X	X	*	X	X	X	X	X	X		
K. KETTLEKAMP	X	X	X	*		X	X	X	X	X		
D. LEHRER	*	*	*	*	*		*	*	*	*		
A. LENKAITIS	X	X	X	*		X	X	*	X	X		
N. LONG	X	X	*	*	*	*	*	*	*	*		
D. PITSTICK	X	X	X	*		X	X	X	X	*		
W. SCHNEIDER	X	X	X	*	X	X	X	X	X	X		
J. WHITE	X	X	X	*	X	X	X	X	X	X		

\* Attendance by electronic means. ^ Attending IFB Leaders to Washington program.

### Kane County Farmer

KANE COUNTY FARM BUREAU PUBLISHED MONTHLY

Steven J. Arnold, Editor

Audre Pack, Bookkeeper

Elizabeth Polovin, Member Services Coordinator

Kelcee Miller, Development & Ag Literacy Program Coordinator

Alice Macha, Communications Coordinator

Sindhu Saveen, Membership Assistant

OFFICE: Randall Rd. between Routes 64 & 38

Address: 2N710 Randall Rd., St. Charles

PHONE: 630-584-8660

info@kanecfb.com www.kanecfb.com

OFFICE HOURS: 8:30-4:30 Monday through Friday

(USPS No. 289700)

POSTMASTER: Send address changes to Kane County Farmer 2N710 Randall Rd., St. Charles, IL 60174

Periodical Postage • Paid to St. Charles, IL 60174  
Year Subscription: \$2.00

<p>■ DISTRICT 1 Aurora, Sugar Grove, Big Rock Twnshp. Nan Long 11461 E. County Line Rd. Big Rock, IL 60511 815-693-7214 Donna Lehrer 7S027 Jericho Rd. Big Rock, IL 60511 630-556-3476 William Keck P.O. Box 281 Sugar Grove, IL 60554 630-466-4030</p>	<p>Joe White President 47W727 Main St. Rd. Elburn, IL 60119 630-557-2517 ■ DISTRICT 3 Virgil, Campton, St. Charles Twnshp. Andrew Lenkaitis 6N707 Corron Rd. St. Charles, IL 60175 630-513-9980 Chris Collins 1143 Anderson Elburn, IL 60119 630-934-4642</p>	<p>Mike Kenyon Secretary/Treasurer 1250 E. Main St. South Elgin, IL 60177 847-741-1818 Craig Bradley 37W791 Orchard Lane Elgin, IL 60124 847-888-2380 ■ DISTRICT 5 Hampshire, Rutland, Dundee Twnshp. Joe Engel 15N720 Walker Rd. Hampshire, IL 60140 847-347-5561</p>
<p>■ DISTRICT 2 Kaneville, Blackberry, Gen./Bat. Twnshp. Bill Collins 1125 Lewis Rd. Geneva, IL 60134 630-484-6852 Karl Kettelkamp 47W407 Main Street Rd. Elburn, IL 60119 630-365-2713</p>	<p>Dale Pitstick 2N118 Pouley Rd. Elburn, IL 60119 630-816-0223 ■ DISTRICT 4 Burlington, Plato Elgin Twnshp. Beth Gehrke 12N860 US Hwy. 20 Elgin, IL 60124 847-697-2538</p>	<p>Gerald Gaitsch 10613 Brittany Ave. Huntley, IL 60142 847-669-2003 Wayne Schneider Vice President 721 Lindsay Lane West Dundee, IL 60118 847-428-0488</p>

**Beef store is now open!**  
By appointment only

*farmdirect***BLACKANGUS.com**

100% hormone free beef.  
Selling individual cuts. Buy as little or as much as you want.

**815.895.4691**  
Mark & Linda Schramer, Owners  
8N840 Lakin Road, Maple Park

  
**Sample Packs make great gifts!**

# How COVID-19 and a farm bill change to milk prices has cost dairy farmers millions

Kane County farmers are expressing concern to Kane County Farm Bureau about fluid milk pricing for milk producers and how it is affecting their bottom line. A discussion of the milk pricing structure occurred at the October KCFB board meeting and has prompted Kane

County Farm Bureau to encourage Illinois Farm Bureau to investigate the COVID induced, unintended consequences of a 2018 Farm Bill change to milk pricing through Federal Milk Marketing Orders and its effect on local farmers.

Kane County Farm Bureau

board member and Hampshire dairy farmer, Joe Engel, said the disparity between Class III and Class IV milk prices had cost him and other dairy farmers tens of thousands of dollars. Engel doesn't blame the government, which has been buying 4% of milk produced for the Farmers to Families Food Box Program instituted in April as part of the Coronavirus Food Assistance Program. He said without the stress of COVID-19 on the market, the 2018 Farm Bill changes would be working as intended, but COVID induced shifts in market demand created a large price discrepancy between Class III and Class IV products that

will continue for the next two months at least, and continue to deflate the payments farmers are getting for their milk. Engel hopes the current policy in the farm bill will be changed to be more favorable to farmers in

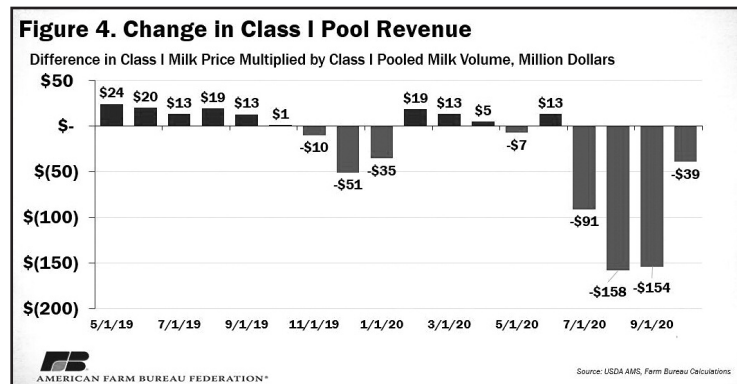
cases of unforeseeable circumstances, and reduce losses that some are currently suffering.

"As written," said Engel. "farmers bear the biggest risk in major market upsets like the one induced by COVID."

## How milk is priced in federal milk marketing orders

For nearly two decades the price for Class I milk, i.e., milk used to produce beverage milk products, was based on the higher-of the advanced Class III and Class IV skim milk price. Class III milk is used to produce cheese and Class IV milk is used to produce nonfat dry milk powders. Advanced pricing allows fluid milk processors to know their milk procurement costs up to six weeks in advance and the higher-of element ensured fluid milk (Class I) prices were always based on the highest-priced manufacturing class (III or IV) of milk.

The 2018 farm bill eliminated the higher-of component of the Class I milk price formula and replaced it with a formula based on the simple average of the Class III and Class IV advanced prices, plus 74 cents – the historical difference between the Class III and IV skim prices to make dairy farmers and milk prices indifferent to this change over a long time horizon. However, anytime the spread between Class III and IV is wider than \$1.48 per hundredweight, dairy farmers will end up with a lower Class I milk price than would have been the case under the previously used higher-of formula. For perspective, from January 2000 to April 2019, the spread between the advanced Class III and Class IV price was larger than \$1.48 nearly 40% of the time.



## HAULS act provides flexibility for transporting ag commodities, livestock

The newly introduced Haulers of Agriculture and Livestock Safety (HAULS) Act of 2020 would help accommodate the seasonal spikes in transportation of food, fiber and other agricultural supplies by modernizing the agricultural exemption to the hours-of-service rules, according to the American Farm Bureau Federation and 101 other farm, livestock and food production groups.

"Given the strong safety record of the U.S. agricultural trucking sector, Congress periodically has modified policies to enhance its usefulness to help ensure a more efficient and cost-effective freight transportation distribution system. But it is in need of updating," the groups wrote in a letter to the bill's sponsor, Sen. Deb Fischer (R-Neb.), chairman of the Senate Commerce Committee's Sub-committee on Transportation and Safety.

The HAULS Act would make three important incremental changes to the agricultural

exemption to hours-of-services rules.

First, it would eliminate the "planting and harvesting periods" requirements to ensure uniformity across the country. Most states already have adopted a year-round agricultural exemp-



tion (Jan. 1 – Dec. 31) to accommodate the diverse range of crops and modern agricultural practices that keep trucks moving agricultural products year-round, the groups noted.

Second, the measure would provide a 150-air-miles exemption from hours-of-service regulations on the backend of hauls. This builds on the current exemption for the beginning of hauls at the "source" and simply would add the term "destina-

tion." The same concerns that exist at the start of the haul – navigating minimally maintained rural roads, allowing extra time to ensure livestock safety, for example – exist at the end of the haul.

"This language also would address the very real concern of those who come close to their destinations and then 'run out of time,' forcing them to leave livestock on their trailers for 10 consecutive hours while only being a short distance from their destination. This is impractical, illogical, and detrimental to animal welfare," the groups wrote.

Third, the HAULS Act would update of the definition of an agricultural commodity for purposes of determining eligible freight for the agricultural exemption. The bill's proposed definition "appropriately covers current agricultural products and allows for continued evolution of any agricultural commodities in the future," according to the groups.

## Statewide online auction for IAITC is in the works

In the spirit of our events usually held at the Illinois Farm Bureau Annual Meeting, the IAA Foundation is excited to host an Online Auction benefiting Illinois Agriculture in the

Classroom programs and activities. The Foundation is now soliciting items for the online auction and they can be dropped off at the Kane County Farm Bureau in St. Charles anytime

before November 4.

Mark your calendars! The auction will be open for bidding from November 30-December 7, closing the auction on the day that would typically be the close of an in-person auction at Annual Meeting. Country Store items will also be available for purchase through the online platform.

To view items, donate or bid, go to <https://iaafoundation.org/get-involved/fundraising-events/online-auction/>.



Happy Thanksgiving from the Kane County Farm Bureau

## Farm toy of the month

This month's farm toy is a classic big red tractor. The Ertl McCormick Farmall 1206 with lights and sound is a 1/16 scale replica of the classic tractor introduced in 1965. It has working cab lights, removable rear wheel duals, easy steering access, engine and back-up sounds, and its rear hitch works with most 1/16 scale implements. That's a lot of farming flexibility for pint-sized farmers.

The 1206 is regularly

\$32.98, but Farm Bureau members get a 10% discount this month. Stop in for your tractor and say hi. We'd love to see you!



**TRELLIS**

Pet Food • Propane  
Salt • Delivery

Your local source for feed, supplies, and so much more!

St Charles and Wasco 630-584-2024

**THE AVERAGE COST TO PREPARE A TRADITIONAL THANKSGIVING DINNER FOR 10 IS LESS THAN \$5.00 PER PERSON.**

SOURCE: AMERICAN FARM BUREAU FEDERATION, 2018.

## AG LITERACY CORNER

By Kelcee Miller, Development & Ag Literacy Program Coordinator

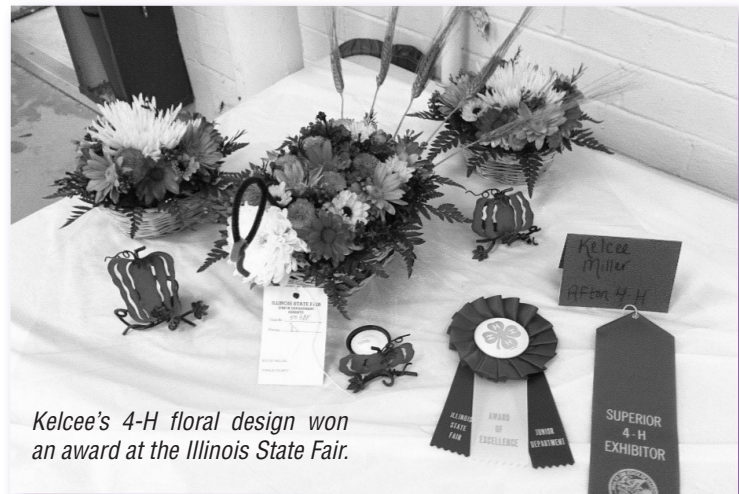


**H**ello Kane County! My name is Kelcee Miller and I am excited to be your new Development and Ag Literacy Coordinator. A little background on me – I am a recent graduate of Illinois State University where I received both my Bachelor’s Degree (2018) and Master’s Degree (2020). I have a background in parks and recreation, college athletics, event management, and hospitality. I am from Sycamore, Illinois where I grew up out in the country with my parents and three siblings. I was involved in athletics, 4-H, and FFA where I showed pigs, a couple bucket calves, and one heifer named Tina during my summers.

One special memory that I will never forget was during my last year in 4-H, my Ag teacher/FFA Advisor/mentor,

Kara Poynter encouraged me to try something new and enter a floral design project. With her support and knowledge from class, I entered a Thanksgiving centerpiece design and found myself surpassing all expectations and taking my design all the way to the Illinois State Fair and winning Superior 4-H Exhibitor! I encourage all of you to try something new and step outside your comfort zone because you will learn so much about yourself and your abilities!

Kane County Farm Bureau is plowing new ground with the combination of Development with Ag Literacy responsibilities. In conjunction with my Ag Literacy duties I will also be responsible for identifying opportunities to promote the charitable activities of the KCFB



Kelcee’s 4-H floral design won an award at the Illinois State Fair.

## KANE COUNTY FARMER

Foundation in FB programs and events. In addition, I will be developing and implementing new ways to track and promote existing Foundation programs such as Harvest for ALL, SPROUTS, AITC, Scholarships and other Foundation programs to solicit, attract new donors, and establish new relationships with members of the community.

As far as Ag Literacy responsibilities, my goal is to help enhance and promote agricul-

ture education to teachers and students even through this pandemic we are in by providing support and resources such as articles, videos, and social media content in addition to our traditional in-person activities.

While COVID may have thrown a wrench in many plans, it also provides an opportunity to step back and think outside the box. We are finding new ways to enhance and adapt our existing programs, fostering

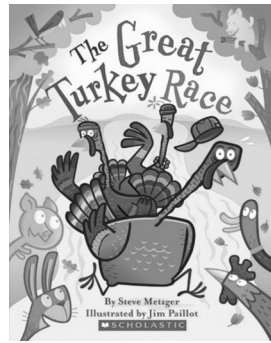
new ideas, and are reaching and connecting with teachers, students and members in innovative ways.

I know I am joining the KCFB family during a rather unique time, but I am optimistic about what the future brings and look forward to creating new ideas and relationships with members of our community. Please feel free to stop by the office and introduce yourself – ‘til then stay safe and healthy!

## Book of the month

November’s theme is all about Thanksgiving and when we think of this special holiday we can’t help but think about the delicious

Thanksgiving turkey! Our book of the month for November is *The Great Turkey Race*, written by Steve Metzger and illustrated by Jim Paillot. This charming story is about three turkeys, Cassie, Wing and Ollie, who all want to be the “very special” Thanksgiving Turkey. To determine which one of them Farmer Joe should pick, they



*The Great Turkey Race* by Steve Metzger

decide to have a friendly field day competition with different sporting events with the winner receiving medals after each event. Then at the very end, the one who has the most medals would show Farmer Joe who he should pick to be the Thanksgiving Turkey. With the help and support of their barnyard friends, the three turkeys compete against one another with an ending that will be sure to bring

a smile to your face! To see how the story ends, come on in to the Kane County Farm Bureau

Library – yes, we have a FREE library! – And check out *The Great Turkey Race* (2006).

The Kane County Farm Bureau Ag Literacy Library was made possible through the vision and forward thinking of the late Bob Konen and the late Dean Dunn, who advocated for accurate books about agriculture for children and adults. A trust established in memory of Bob and Alyce Konen provides funds for book purchases for our Ag Literacy Library, for our annual third grade, in-classroom SPROUTS reading program, and for books about agriculture provided to school and public libraries each year during National Library Week.

## Welcome to the next level

This month we welcome the following KCFB members who joined our organization or reclassified their membership in August to \*Regular or Professional Status:

### Regular Members

Jennifer Anderson Elgin  
David McCaughey St. Charles  
Austin Shingledecker Elburn

We remind you of added perks that accompany your new Regular member or Professional Status and thank you for supporting KCFB’s efforts at advocacy, education and hunger relief:

- Professional networking opportunities & engagement with farmers
- Agriculture, farm & food news delivered to your door
- New subscription to FarmWeek, the largest weekly agriculture newspaper
- Access to FarmWeek Now.com
- KCFB voting rights & ILFB delegate opportunities

- Continuing subscription to the Kane County Farmer newspaper
- Free annual registration at one of 7 statewide conferences
- 302,000 member discounts, including Ford, Lincoln, John Deere, Case IH, restaurants, hotels & travel
- Discounts at the KCFB Country Store on in-house sales of featured local foods

*\*KCFB Regular membership is required of all who join our association that have a vested interest in and receive income from the production of farm products as an owner or operator of a farm business. Professional Membership status is available for all those employed in agriculture-related occupations, even with no farm income. If you are interested in “next level” membership and the benefits it carries, please contact KCFB in St. Charles at (630) 584-8660.*

## Recruiter of the Month

Each month we honor the person who signs the most members into our organization. This month, the honor goes to Jennifer Rivera! David has been a COUNTRY Financial Representative since February 2020. Her



Jennifer Rivera

office is located at 1161 Oak St #4, North Aurora and may be reached at 630-449-0921.

Thank you for your continued support of the Kane County Farm Bureau and congratulations on your success!

*Happy Thanksgiving*  
from Kane County Farm Bureau

## Helping you protect what matters most



**Bob Effner** CLF®, LUTCF  
St. Charles/Elgin  
Agency Manager  
630-584-0001



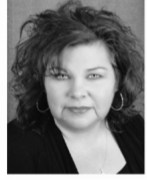
**Todd Wilcox**  
St. Charles  
630-762-1326



**Bobbi Boston**  
St. Charles  
630-485-5155



**Keith Eakins**  
St. Charles  
630-762-1324



**Kelly Landorf**  
St. Charles  
630-762-1328



**Donna Tonovitz**  
St. Charles  
630-549-7694



**Orazio Difruscolo**  
St. Charles  
630-549-7696



**Ashraf Gerages**  
Aurora  
630-898-3750



**Edward Stuehm**  
Geneva  
630-845-8245



**Deb Stob**  
Geneva  
630-208-0890



**Michael O'Brien**  
Geneva  
630-762-0852



**Jeff Jones**  
Geneva  
847-989-9989



**Victor Alvarado**  
Elgin  
847-742-0003



**Luke Fawkes**  
Elgin  
847-742-0001



**Sherry Lochen**  
Elgin  
847-742-0001



**Bob Kearns**  
S. Elgin  
847-888-3200



**Bob Riedel**  
West Dundee  
847-428-5434



**Gary Bolger**  
West Dundee  
847-531-6110



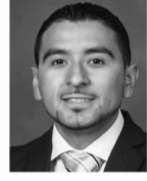
**Sherri Schramer**  
Elburn  
630-365-9500



**Dominick Davero**  
Elburn  
630-365-3737



**Chuck Quick**  
Hampshire  
847-683-2100



**David Berreles**  
Hampshire  
847-683-2100



**Dan Cooper**  
Sugar Grove  
630-466-9600



**Ted Schuster**  
Sugar Grove  
630-466-9600



# Farm Facts @ Fun

Compiled by Kelcee Miller, Ag Literacy Coordinator



## Let's celebrate food this season

'Tis the season for family gatherings and holiday celebrations. With food-centric holidays like Thanksgiving coming up, it's the perfect time to celebrate our food and the hands that grow, raise, transport, and prepare it for our family feasts.

We live in a time where food eats up (pun intended) a small share of our disposable income. In 2019, Americans spent just under 10 percent of their disposable income on food, including food purchased to consume at home and food purchased to consume away from home (United States Department of Agriculture Economic Research Service, 2019). Food has maintained its 10-percent share for the last two decades, following a steady drop from its share of nearly 17 percent of total disposable income in 1960, leveling out at around 10 percent in 1998 (USDA ERS, 2019).

Getting back to the holidays, research conducted by the American Farm Bureau Federation estimates the cost of a traditional Thanksgiving dinner at \$48.91 (AFBF, 2019). That's less than \$5.00 per person for plates full of turkey and all of the fixings, including stuffing, sweet potatoes, peas, cranberries, a vegetable tray, rolls with butter, pumpkin pie topped with whipped cream, and a glass of milk to wash it all down. And that's not even counting the meals made with the leftovers, including Thanksgiving turkey classics like turkey soup and turkey-and-stuffing sandwiches!

The reality is that we have lots of choices when it comes to preparing and serving food to our families. No matter the selections you make to carry out your holiday traditions, you can count on all of the options stocked on grocery store shelves, available at the farmers market, or served at your favorite restaurant as being nutritious and affordable.

In the spirit of the season, Illinois farmers are grateful for our efficient food system and customers of food, fuel, and fiber who keep our families in business. Happy Thanksgiving from our families to yours!

Learn more about Illinois farming and agriculture at [watchusgrow.org](http://watchusgrow.org).

## Thanksgiving

W E D E C K X T B R X U G A H M F P M I  
 S E D A R A P E X L U B U I A C N I J Z  
 A E B J I H K C A V N B R P R O H L W X  
 R N I R E D I C E L P P A O V R G G B Y  
 O V X R S N I K P M U P V C E N N R G H  
 L N F L R F V U Y Z H H Z U S N I I D S  
 L C F C A E E W R O D B R N T E V M L P  
 S X H M A R B L P U C M Z R J I I S L Q  
 C N I W J W K N O U B T C O Y T G S G F  
 S L G O B B L E A R P A D C D U S T P E  
 Y Y Z Z G P L N B R E E D E S R K U Q A  
 G R E E N B E A N S C S C A Q K N F W S  
 T J X T O A S F G Y L I S A A E A F L T  
 L N Q R Z N R W U F J X R A N Y H I L X  
 O U Z R A U L U F K N A H T C S T N A B  
 S W C I S W E E T P O T A T O E S G B M  
 Q Y D R Q Q R I F P C K E I H Z L X T Q  
 D N S C E D U T I T A R G E I P G T O M  
 I G V H J E I Z U O L F S H X C T L O D  
 N K D K B V U W Q N U B Y K B O K F F I

Apple cider  
 Casserole  
 Corn  
 Cornucopia  
 Cranberries  
 Family  
 Feast  
 Football  
 Gobble  
 Gratitude  
 Green beans  
 Harvest  
 Indians  
 Parade  
 Pecans  
 Pie  
 Pilgrims  
 Pumpkins  
 Rolls  
 Stuffing  
 Sweet potatoes  
 Thankful  
 Thanksgiving  
 Turkey

Name \_\_\_\_\_  
 Address \_\_\_\_\_  
 City \_\_\_\_\_ State \_\_\_\_\_ Zip \_\_\_\_\_  
 Telephone (\_\_\_\_) \_\_\_\_\_ Email \_\_\_\_\_ Age \_\_\_\_\_

Return to: Kane County Farm Bureau, 2N710 Randall Road, St. Charles, IL 60174 by November 15, 2020 to be entered in our drawing for a 10 lb. fresh turkey prize. Prize must be picked up at the KCFB office on Tuesday, November 24.

## Fallin' for turkeys craft

### Materials:

- Leaves (yes, collect from outside!)
- Large cardboard circles (recycle a box & trace a circle) or paper plates
- Scissors
- Glue or glue gun
- Googly eyes or pom-poms
- Construction paper
- Markers

### Steps:

- Collect a variety of beautiful fall leaves from outside
- Trim the leaf stems with scissors
- Cut out a large circle from cardboard if not using a paper

plate

Add glue to circle & begin covering the entire circle with leaves (add more glue as needed)

Cut head, beak, wattle, snood, & feet with construction paper (or left over cardboard)

Glue body features (head, eyes, beak, wattle, snood, feet, etc.)

Let your imagination run wild – use remaining pieces or extra leaves to add a special touch!

What does your finished turkey look like? Show your creative side with us on Facebook!

ished turkey look like? Show your creative side with us on Facebook!

Craft courtesy of The Crafty Crow <https://www.thecraftycrow.net/2008/11/fall-leaf-turke.html>



## Don't let those Thanksgiving leftovers go to waste!

Try these recipe ideas & more courtesy of [watchusgrow.org](http://watchusgrow.org):

### Jokes

Why did Billy get such low grades after Thanksgiving?

*Because everything is marked down after the holidays!*

What kind of vegetable would you like on Thanksgiving?

*Beets me!*

What does Dracula call Thanksgiving?

*Fangs-giving!*

What are turkeys mostly thankful for at Thanksgiving?

*Vegetarians!*

Thanks to [kidsactivities.net/thanksgiving-jokes-kids](http://kidsactivities.net/thanksgiving-jokes-kids)

• Save the seven recipe ideas on this site to use once Thanksgiving day has come and gone: <https://www.watchusgrow.org/2018/11/25/7-thanksgiving-leftover-meal-ideas/>. Here's a sampling of leftover recipes:

**Turkey Shepherd's Pie:** In a pan of your choice, layer your leftover turkey, stuffing, vegetables & cheese and top it all off with a layer of mashed potatoes!

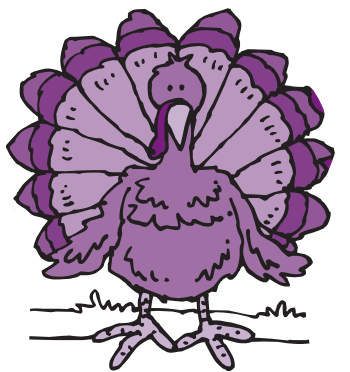
**BLTT:** Use your leftover dinner rolls or grab your favorite bread of choice and add bacon, lettuce, tomato & turkey!

**Mini sliders:** Slice your leftover dinner rolls, add turkey, cheese & stuffing, glaze the tops of the rolls with some melted butter, and bake until golden brown!

• Can you build a Thanksgiving feast using local Illinois products? It might be easier than you think: <https://www.watchusgrow.org/2018/11/01/farm-to-thanksgiving-table/>.

## Thanksgiving Fun Facts

- Pumpkin pie filling is the #1 pumpkin product on the market. Pumpkin spice lattes come in at a close second.
- More than 85% of the world's canned pumpkin is processed at the Libby's plant in Morton, Illinois.
- In 2019, Illinois farmers grew nearly 420 million pounds of pumpkins with a value of more than \$17 million.
- Pumpkin pie has been a staple in fall Thanksgiving feasts in New England as far back as the 18th century.
- Americans prepare approximately 46 million turkeys to celebrate the Thanksgiving holiday every year.
- According to a 2019 Instacart survey, 68% of Americans secretly dislike a classic



Happy Thanksgiving!

## November is ...

### National

- Bison Day Nov. 2
- Deviled Egg Day Nov. 2
- Sandwich Day Nov. 3
- Candy Day Nov. 4
- Sundae Day Nov. 11
- Pickle Day Nov. 14
- Stuffing Day Nov. 21
- Cake Day Nov. 26
- Thanksgiving Nov. 26
- French Toast Day Nov. 28
- Lemon Cream Pie Day Nov. 29
- Candy Corn Day Nov. 30

### Monthly celebrations

- Banana Pudding Lovers Month
- National Peanut Butter Lovers Month
- National Fun with Fondue Month
- National Pepper Month

## Congratulations

**Karen Fox** of Batavia is the October 2020 word search winner. Her name was chosen from the entries received for correctly completing last month's word search puzzle. For her participation, she receives a box of Inboden's bratwurst to be picked up at the Farm Bureau within the next 30 days (prizes will not be mailed). Thank you, Karen, for reading the *Kane County Farmer* and continue to watch each month for more great opportunities from the Kane County Farm Bureau.



**A time to celebrate family, food and its affordability**

To my surprise, our son recently announced how much he loves Thanksgiving. Keep in mind, this comes from a kid who started his Christmas wish list in August. For a couple weeks this fall, he and his sister discussed whether our 10-month-old farm dog should dress as a delivery driver or a hot dog for Halloween.

So, Thanksgiving? He says this holiday of thankfulness starts with a cool parade on TV. We spend the day with cousins, and the food is "really, really good." I agree, and it rates one of the most affordable for many reasons: No gifts, simple decorations, and comfort food at a comfortable price. In fact, the

ingredients to make the classic Thanksgiving meal cost about \$50 for a gathering of 10 people, according to the American Farm Bureau Federation (AFBF). For 35 years, the nation's largest farm organization has calculated the cost of the classic fixings of turkey, stuffing, sweet potatoes, rolls with butter, peas, cranberries, a veggie tray, pumpkin pie, coffee and milk to be under \$5 per person. AFBF even predicts leftovers at that bargain price.

Most fast-food meals cost more than that. Our family's Thanksgiving likely does, too, as we traditionally exceed the meal's basic menu requirements. Then again, every household participates to share in the expense. My sister-in-law's cheese ball shaped as a turkey makes a festive appetizer. My aunt pan-fries sweet potatoes to a delectable glaze laded with margarine and sugar. While green in color, my grandma's pistachio pudding layer salad certainly doesn't meet the universal definition of salad. Yet in good-old Midwestern fashion, we treat it like a salad in the food line

despite the whipped topping. Then, we have dessert, too.

My British brother-in-law loves Thanksgiving for layered pumpkin-pecan pie. His parents like it, too, and sometimes visit from England during this traditionally American holiday. They like how the celebration brings family together for a combination of great food and company without the obligations and pressure to purchase presents. Still, they bring us boxes of British chocolates.

Our son's favorite part of the meal is turkey with Grandma's dressing. Our daughter loves Granny's butterhorn rolls. My tastebuds like everything, including a dollop of homemade cranberry sauce that took me nearly 40 years to appreciate. Kudos to my son for appreciating the simplicity of this holiday so young. If I can only get him to crave the cranberries earlier in life than me.

*About the author: Joanie Stiers' family grows corn, soybeans and hay and raises beef cattle and backyard chickens in West-Central Illinois.*

## iPhone app, IFB membership benefit platform alert members to benefits

You already know how to use your phone to find nearby gas or the closest Walgreens with a Redbox. Now let the ILLINOIS FARM BUREAU BENEFITS app send alerts to your iPhone or iPad when you are close to discounts at participating businesses.

No iPhone? You can access nearby discounts and get the same alerts using the MEMBERSHIP BENEFIT PLATFORM, <https://ilfb.abenity.com>, from any web browser. Save the page to your favorites or your phone's home screen!

Kane County Farm Bureau members enjoy more than 302,000 savings and discounts, now usefully linked in the IFB Benefits iPhone app. KCFB recommends you get the app and let it notify you, as you drive by, about savings on tires, beef sandwiches, gym memberships, haircuts and more! "We're extremely pleased to offer this new platform for our members, giving them added discounts on hotels, theme parks, restaurants, movies and everything in between," said Melissa Rhode, Marketing Director at Illinois Farm Bureau.

"Best of all, the app shows both local and national discounts and can even notify members when they're near a

business that offers discounts," she added.

It's easy to download and use the iPhone app, or to access the membership benefit platform from a web browser, for member discounts. From your iPhone's App Store, search ILLINOIS FARM BUREAU BENEFITS and choose the app that matches our picture here. To use the online benefit platform from your web browser, visit <https://ilfb.abenity.com> and create an account right there online.

Once inside the app or the web platform,

- Use your Illinois Farm Bureau membership number to create an account.
- Include the dash but NO LETTERS (ex. 045-999999).
- Search offers using business

names, locations, categories and more.

- Show and save mobile coupons.
- Customize the app to include frequently used offers.
- Cash in on instant in-store discounts at nearby restaurants and retailers.

"Our members have nothing to lose and everything to gain with this new platform," Rhode said. "Members will find more than 302,000 discounts on top of what is already available through their Illinois Farm Bureau membership."

Members who have questions about the app, or about member benefits may contact Kane County Farm Bureau at (630) 584-8660.

**Download, Sign up, and SAVE!**



Scan this Code  
On your Apple Device

OR  
head over to  
<https://ilfb.abenity.com>

- Log in to our new membership benefit platform using your Kane County Farm Bureau membership number, WITH NO LETTER(S) at <https://ilfb.abenity.com>
- Search offers using business names, locations, categories, and more
- Change your location to see deals near you
- Use our app to show and save mobile coupons
- Provides instant, in-store discounts at nearby restaurants and retailers



# ROCPIT EQUIPMENT

## MASCHIO GASPARDO

### ELBURN ILLINOIS

DALE: 630.816.0223

ROCPITEQUIP@GMAIL.COM

## TILLAGE • PLANTING

## • CROP CARE •

## FORAGE



## IAITC November schedule

Illinois Agriculture in the Classroom is offering a variety of resources geared towards teachers and parents in this era of virtual learning. Below is a graphic outlining the November programming schedule, including lesson release dates, class-

room and family challenges, an author visit, and virtual field trip.

Find these lessons and more at <https://www.facebook.com/agintheclassroom> or at <https://www.beyondthebarndoor.wordpress.com>.

November Lessons and Activities Schedule	
Release Date	Theme: Pork
October 17th	PD in your PJs: Pork for November, Evergreen Trees for December
October 21st	Classroom Challenge for November: Design a Pig Barn
October 29th	Lesson for the Week of November 2nd: Paper Bag Pig Puppet
November 5th	Field Trip: Bruce Brinkman Farms, Pork Tour
November 5th	Lesson for the Week of November 9th: Bacon Blackout Poetry
November 6th	Family Engagement Challenge: Make Your Own Feedsack
November 11th	Family Cooking Challenge: Pigs in a Blanket
November 12th	Author: Lisl Detlefsen, <i>Time for Cranberries</i>
November 12th	Lesson for the Week of November 16th: Pig Placemat
November 18th	Classroom Challenge for December: Comparing Conifers
November 19th	Lesson for the Week of November 23rd: Pudding Cup Turkeys and Applesauce Pigs
November 25th	Lesson for the Week of November 30th: 3D Evergreen Tree

All activities and lessons will be released on the Illinois Agriculture in the Classroom Facebook page.



Central Burlington High School teacher and FFA Advisor Ryan Robinson stands in the small animal lab at the high school on Plato Road. In 2018, Central Unit District 301 launched the state's first comprehensive veterinary science program at the high school level to help address a statewide shortage of veterinary assistants. It is being offered as part of a regional career pathways cooperative – the Northern Kane County Regional Vocational System – to member districts: District 301; Elgin Area School District U-46; Algonquin-based Community Unit District 300; and St. Charles Unit District 303. Through the partnership, students from these districts can take courses not offered at their home schools.



## Recycle

### Scrap for CASH

Steel, Copper, Aluminum & Cars

**Trucking & Dumpster Service Available**

*"Helping to keep America Picked up for 45 years"*

Zimmerman Recycling, Inc.  
301 Industrial Drive, DeKalb  
(815) 756.8600

# Last chance to comment on KDOT 2050 plan

November 18 is the cutoff for comments on the County of Kane's Long Range Transportation Plan, which has been in development through a series of public forums over the last several years. Of particular interest to farmers and rural landowners in these periodic updates are the widening of transportation corridors, and the new roadway alignments and realignments. These are reproduced below from the DRAFT Plan available on the KDOT website, [www.kdot.countyofkane.org](http://www.kdot.countyofkane.org).

For a direct link to the 100 page plan, visit: [http://kdot.countyofkane.org/Long%20Range%20Plan/KaneCounty\\_2050\\_LRTP\\_Final.pdf](http://kdot.countyofkane.org/Long%20Range%20Plan/KaneCounty_2050_LRTP_Final.pdf)

To view a Powerpoint presentation used at open houses, visit: [http://kdot.countyofkane.org/Long%20Range%20Plan/PPT\\_KaneCounty2050LRTP\\_FINAL.pdf](http://kdot.countyofkane.org/Long%20Range%20Plan/PPT_KaneCounty2050LRTP_FINAL.pdf)

or to submit comments, go to: [https://docs.google.com/forms/d/e/1FAIpQLSf\\_GG0jwmhapgdZJTIPbA\\_j2\\_9qvREqyczF0aNLu7VYTff10g/viewform](https://docs.google.com/forms/d/e/1FAIpQLSf_GG0jwmhapgdZJTIPbA_j2_9qvREqyczF0aNLu7VYTff10g/viewform).

[forms/d/e/1FAIpQLSf\\_GG0jwmhapgdZJTIPbA\\_j2\\_9qvREqyczF0aNLu7VYTff10g/viewform](https://docs.google.com/forms/d/e/1FAIpQLSf_GG0jwmhapgdZJTIPbA_j2_9qvREqyczF0aNLu7VYTff10g/viewform).

### New Alignments

Within the Planning Area Studies, there are multiple major new alignments planned by Kane County and local municipalities to support the arterial system. The new alignments would add connectivity to the transportation system and access to newly developed areas. Healy Road is planned to be extended from Bliss Road to Seavey Road.

In addition, the County supports the efforts to improve connectivity and system efficiency with locally planned new alignments. The Corron Road extension from Bowes Road to Plank Road and possibly US 20 is planned to provide additional north-south access between IL 47 and Randall Road (in accordance with the Northwest Kane County Planning Area Study). The Corron Road extension

### Widening of Existing Arterials

Arterials other than Strategic Regional Arterials have also been identified for widening. Table 9-1 shows the additional arterial widening projects. All of the roadways listed would be widened to four lanes, with the exception of Jericho Road, which is a three-lane project. It should be noted that Kreutzer Road is shown as an arterial in that there are plans to reroute traffic from Huntley Road to Kreutzer Road providing a bypass of the downtown Huntley area.

**Table 9-1. Non-SRA Arterial Widening Improvements**

Roadway	Segment Limits	Jurisdiction
IL 31	North County Line to Huntley Road	IDOT
IL 38	IL 47 to Randall Road	IDOT
IL 68	IL 72 to East County Line	IDOT
IL 72	IL 47 to Tyrell Road	IDOT
IL 72	Tyrell Road to Locust Drive	IDOT
U.S. 30	Dauberman Road to IL 47	IDOT
Big Timber Road	Ketchum to Randall Road	County
Bliss Road	IL 47 to Main Street	County
Bowes Road	South Water Road to McLean Road	County
Burlington Road	Bolcum Road to IL 64	County
Fabyan Parkway	Main Street to Randall Road	County
Galena Boulevard	IL 47 to Orchard Road	Local
Galligan Road	Binnie Road to Freeman Road	County
Huntley Road	North County Line to Sleepy Hollow Rd.	County
Jericho Road	IL 47 to Orchard Road	County
Keslinger Road	East of Peck Road to Randall Road	County
Keslinger Road	Bunker Road to Peck Road	County
Keslinger Road	IL 47 to Anderson Road	County
Kreutzer Road	IL 47 to Huntley Road	Local
Main Street	Bunker Road to Randall Road	County
McLean Road	IL 31 to Hopps Road	IDOT
Montgomery Road	Briarcliff Road to Hill Road	County
Plank Road	IL 47 to Russell Road	County
Plank Road	Russell Road to US 20	County
West Bartlett Road	IL 25 to East County Line	County

(story continued on page 8)

## THANKSGIVING BLESSINGS

By Alice Macha



Thanksgiving is my favorite holiday. I appreciate this bright light of celebration in November, usually our dreariest month. I appreciate that Thanksgiving does not require elaborate decoration and frantic shopping episodes, but is instead a reason to reflect and give thanks for the wonderful bounty and opportunity of living in America, and a reason to celebrate our bounty with family and friends.

The modern concept of Thanksgiving was proposed by a woman in 1827. Noted magazine editor and prolific writer Sarah Josepha Hale launched a campaign to establish Thanksgiving as a national holiday. For 36 years, she published editorials and sent letters to governors, senators, presidents and other politicians, promoting the idea of a "Thanksgiving day".

Abraham Lincoln finally heeded her request in 1863, at the height of the Civil War, and issued a proclamation calling all Americans to ask God to "commend to his tender care all those who have become widows, orphans, mourners or sufferers in the lamentable civil strife" and to "heal the wounds of the nation." He scheduled Thanksgiving for the final Thursday in November, the day ton which we still celebrate this

national holiday.

Abraham Lincoln was a simple, spare man who respected honesty, humility and brevity. I ponder what he would have thought of today's frantic media circus, sound bites and tweets. I think in today's political environment he would have had neither the personal wealth nor the hubris to become a political celebrity. I will, therefore, leave you with some of his simple, humble, yet eloquent comments about human nature, our nation, and our humanity. Let's celebrate our commonality and our community. Happy Thanksgiving, America.

*There is no grievance that is a fit object of redress by mob law.*

—January 27,

1838 Lyceum Address

*Don't interfere with anything in the Constitution. That must be maintained, for it is the only safeguard of our liberties. And not to Democrats alone do I make this appeal, but to all who love these great and true principles.*

—August 27, 1856

Speech at Kalamazoo, MI

*The people – the people – are the rightful masters of both congresses, and courts – not to overthrow the constitution, but to overthrow the men who pervert it.*

—September 16 and 17,

1859 Notes for Speeches at

Columbus and Cincinnati  
*Of our political revolution of '76, we all are justly proud. It has given us a degree of political freedom, far exceeding that of any other nation of the earth. In it the world has found a solution of the long mooted problem, as to the capability of man to govern himself. In it was the germ which has vegetated, and still is to grow and expand into the universal liberty of mankind.*

—February 22,

1842 Temperance Address

*The legitimate object of government, is to do for a community of people, whatever they need to have done, but can not do, at all, or can not, so well do, for themselves – in their separate, and individual capacities.*

—July 1, 1854 [?]

Fragment on Government

*Our government rests in public opinion. Whoever can change public opinion, can change the government, practically just so much.*

—December 10, 1856

Speech at Chicago

*As I would not be a slave, so I would not be a master. This expresses my idea of democracy. Whatever differs from this, to the extent of the difference, is no democracy.*

—ca. August 1, 1858

Fragment on Democracy

*It is not merely for to-day, but for all time to come that we should perpetuate for our children's children this great and free government, which we have enjoyed all our lives.*

—August 22, 1864 Speech to the One Hundred Sixty-sixth Ohio Regiment

## What's new in the COUNTRY agencies?

### St. Charles Agency, Bob Effner, Agency Manager

Donna Tonovitz has been named the Rep of the Month for September 2020 in the St. Charles/Elgin Agency, as announced by Agency Manager, Robert J. Effner, Sr., CLF®, LUTCF. Donna has provided tangible plans for addressing the immediate and long term insurance needs of her clients through COUNTRY Financial's diverse products and services:

Farm, Home, Life, Business, Retirement. Let Donna's expertise help you! You may reach Donna at 630-549-7694, [donna.tonovitz@countryfinancial.com](mailto:donna.tonovitz@countryfinancial.com), or <https://representatives.countryfinancial.com/donna.tonovitz/>. Congratulations, Donna!

### Aurora Agency, Kevin Gomes, Agency Manager

Zach Fox, Financial Representative with the Aurora Agency, is our Financial

Representative of the Month for September 2020.

Zach began his career with COUNTRY Financial in May of 2007 and services clients out of his office located at: 1920 Wilson Street, Batavia, 60510- (630) 326-1996. Zach's professionalism and vast knowledge of auto, home, life, commercial and financial products make him a great person to do business with.

Congratulations, Zach!

## CLASSIFIED ADS

### CLASSIFIED AD RATES

Classified advertising rates: 20 cents per word/\$20 minimum (60 words or less). DISCOUNTS for members: Associate members, 20%; Voting members, 30%; PLUS members, 40%. Advance payment requested. Ads due by the 15th of every month for the next issue. No advertising (classified or display) for financial or insurance services will be accepted. Call 630-584-8660.

### SERVICES

Jim Verhaeghe & Sons, Inc. – Tree removal, tree trimming, & stump grinding. Backhoe work & Tile Lines. Fully insured – Free Estimates – Jim Verhaeghe Sr. Call: 847 334 5730

### WANTED

Want to buy vintage & used tools. Also, we do cleanouts. Call Chris – 630 550 7182

HELP WANTED – STUDENT for PART TIME CLERICAL OFFICE POSITION. High School or college student wanted for clerical office position located East side of St. Charles. Minimum of 15 hours weekly including Saturday

mornings. Days and hours can be adjusted to your schedule. Call Bob 630-377-1056 ext 101 for further information.

HELP WANTED – CLERICAL/CUSTOMER SERVICE. 25-35 hours weekly: M-F: must be self-starter and team player.

Applicants should be computer literate with pleasant phone voice. Some overnight travel possible. Vacation pay and investment plan offered. Office located East Side of St. Charles. Call Bob: 630-377-1056 ext 101 for further information.



**"Fuel Is Our Life"**



We offer wet hosing, bulk tank fills and package lubricants – D.E.F, Oil, Hydraulic, Diesel and Gas for all your needs.

We are a 24/7 Fuel Supplier servicing Illinois – Wisconsin – Indiana

Call us today at 847-994-3010 or visit us online at [www.luckysenergy.com](http://www.luckysenergy.com)

**Growing To Serve You Better**

*Several Kane County Farm Bureau member farms and businesses offer Christmas Trees and some offer wreaths and roping/garland.*

**These locations include:**

- Heinz Brothers Greenhouse – St. Charles  
630-377-6288
- Klein's Farm & Garden Market – Udina  
847-697-4910
- Kuipers Family Farm – Maple Park  
815-827-5200
- Lee's Trees – Lily Lake  
630-365-2116
- Spring Bluff Nursery – Sugar Grove  
630-466-4278
- Randy's Vegetables – Sleepy Hollow (Dundee)  
\*Heiden's Christmas Trees  
906-280-1897
- Theis Farm Market & Greenhouses – Maple Park  
815-985-8001
- Tom's Farm Market & Greenhouse – Huntley  
847-669-3421
- Trellis Farm & Garden – St. Charles  
630-584-2024

# KDOT Plan

(continued from page 7)

connects to a local collector road at US 20, providing further connectivity to Coombs Road.

Gordon Road in south-central Kane County is planned to extend from south of Jericho to Prairie (in accordance with the Sugar Grove, Aurora, Montgomery Planning Area Study). This would be a locally funded and maintained four-lane alignment with a boulevard cross-section and a grade separation at the railroad crossing. The southern and northern sections of Gordon Road have already been built.

The County supports additional local planning efforts to increase connectivity within the collector roadway system.

## Realignments

Realignments are planned to provide additional connectivity between existing roadways. All proposed realignments would be County-funded and maintained. Bliss Road would be realigned with Fabyan Parkway at Main Street as part of the proposed Bliss Road widening project. Bunker Road would be extended and then aligned with La Fox to provide a better north-south connection in the central portion of the county. The railroad crossing on this alignment north of Keslinger Road was previously grade-separated.

In the southeast portion of the county, Deerpath Road would be realigned at Orchard Gateway Boulevard to connect the north and south segments of the roadway. Healy Road would

be realigned at Norris Road to connect with Tanner Road, and Tanner would be realigned at Deerpath to connect with Oak Street. These realignments, in conjunction with the Healy Road extension, would provide greater continuity and connectivity for traffic in the area. In addition to this location, a realignment of Farnsworth Avenue at Montgomery Road is planned to provide continuity for the SRA running along the county's eastern border.

The northern portion of Galligan Road would be realigned west of the existing roadway and would extend the road north past Huntley Road to intersect with Lakewood Road in McHenry County.

Six realignments in the west-

ern third of the county are planned. Together, these six alignments provide for a continuous north-south corridor and improve connectivity. The five alignments are:

- Bliss Road and Fabyan Parkway at Main Street
  - Granart Road and Dauberman Road (at US 30)
  - Dauberman Road and Meredith Road (at Keslinger Road)
  - Meredith Road with Peplow Road (at IL 64)
  - Peplow Road and French Road (Burlington Bypass)
  - French Road and Harmony Road (new alignment between West Oak Knoll Drive and Allen Road)
- The Granart/Dauberman Road alignment will assist in

relieving the traffic congestion at Dugan Road and US 30 and would help provide north-south connectivity in the western third of the county. The Burlington Bypass and the French/Harmony alignment would both have a grade separation with the Chicago Central & Pacific Railroad and the Canadian National Railroad, respectively.

In addition, the Brier Hill realignment and widening to a four-lane cross section is a locally planned initiative improvement to support the proposed half interchange at Brier Hill, and I-90 and would provide improved access to US 20 and Big Timber Road from the north.

Source: 2050 Kane County Long-Range Transportation Plan.

Right: Banners on a trailer in the KCFB parking lot proclaim the annual KCFB Foundation Fall Décor Sale. Chrysanthemums for the KCFB Foundation fundraising sale arrived September 23rd on a cool and dewy morning. KCFB staff hustled 530 brightly hued mums off two trucks and onto the lawn, where they were sorted by color and size, and joined piles of pumpkins, gourds, corn shocks and straw bales in a colorful display in the KCFB parking lot.

Our thanks to all our loyal KCFB members and friends for supporting the Foundation with purchases of mums, pumpkins and more.



## Going, going, gone!



The KCFB Foundation's "Dutch Auction" for our 1969 C/10 was short-lived. The truck was purchased on day 3 of the auction following its first \$100 price drop. Be on the lookout for a replacement soon for the 2021 Vintage Truck Raffle.

## Order your fresh, never frozen turkey

Start a holiday tradition like no other with a fresh HoKa turkey for Thanksgiving. HoKa turkeys are locally raised at Howard Kauffman Turkey Farms in nearby Waterman, IL. They are individually wrapped and boxed, which makes them perfect for holiday entertaining or as gifts. Kaufman Turkey Farms is one of the country's last independent family turkey farms with its own federally inspected dressing plant.

	Whole Turkey	Whole Smoked Turkey
KCFB Member PLUS members:	\$3.19/lb.	\$4.29/lb.
KCFB members:	\$3.35/lb.	\$4.51/lb.
Non-members:	\$3.51/lb.	\$4.72/lb.

Order yours by Thursday, November 21, by calling Kane County Farm Bureau at (630) 584-8660 or mail back the order form below. Turkeys vary in weight, so please indicate the weight you would like and we will get as close as we can (exact weight cannot be guaranteed, a 2-lb range is recommended).

Pick-up is at Kane Co. Farm Bureau on Tuesday, November 26, just in time for your Thanksgiving dinner!

### Kane County Farm Bureau - Fresh Thanksgiving Turkeys

\_\_\_\_\_ # of turkey(s). Requested weight(s) (2-lb range, please): \_\_\_\_\_ - \_\_\_\_\_ lbs.  
 \_\_\_\_\_ # of smoked turkey(s). Requested weight(s) (2-lb range, please): \_\_\_\_\_ - \_\_\_\_\_ lbs.

**DEADLINE FOR ORDERING IS THURSDAY, NOV. 19.**

**Payment is due at pickup at the Farm Bureau Tuesday, November 24, 12-5:00pm**

Name: \_\_\_\_\_

Telephone No./E-mail: \_\_\_\_\_

Member Number: \_\_\_\_\_

Mail to Kane County Farm Bureau, 2N710 Randall Rd., St. Charles IL 60174  
 or order by phone: (630) 584-8660 or e-mail: member@kanecfb.com

## Holiday Product ORDER FORM

CITRUS ♦ NUTS ♦ CHEESE ♦ MEAT ♦ POPCORN ♦ SPICE

Kane County Farm Bureau is once again offering fresh citrus and seasonal items for the holidays trucked in fresh to fill our orders. Members say the taste and freshness are hard to beat! An annual tradition for at least half a century, this is one you'll be glad to be a part of. KCFB members receive a discount & PLUS members get an even better deal. Check out the gift boxes for holiday gift giving.

Complete the order form and return with your payment to Kane County Farm Bureau, 2N710 Randall Road, St. Charles, IL 60174, by **Friday, Nov. 20th Pickup is Thursday, December 10<sup>th</sup>, 2020** at Heinz Brothers Greenhouse (same as last year), 2010 E. Main St., St. Charles (just west of Dunham Road).

NAME: \_\_\_\_\_

ADDRESS: \_\_\_\_\_

CITY, STATE, ZIP: \_\_\_\_\_

PHONE: \_\_\_\_\_

EMAIL: \_\_\_\_\_

KCFB MEMBER#: \_\_\_\_\_

CREDIT CARD#: \_\_\_\_\_

EXPIRATION DATE: \_\_\_\_\_ CVC#: \_\_\_\_\_

**ORDER DEADLINE: Friday, November 20, 2020**  
**\$25 for PLUS Member Pricing (Additional benefits apply)**

Questions? Call 630-584-8660

PICKUP TIME: Thursday, December 10, 2020  
 10:00 A.M. - 5:00 P.M.

LOCATION: HEINZ BROS. GREENHOUSE  
 2010 E. MAIN ST., ST. CHARLES  
 (JUST WEST OF DUNHAM ROAD)

PAYMENT: **WITH ORDER PLACEMENT**  
 WE ACCEPT VISA, MASTERCARD & DISCOVER

SEND ORDER TO: KANE COUNTY FARM BUREAU  
 2N710 RANDALL ROAD  
 ST. CHARLES, IL 60174

QUANTITY		Non-Member	PRICE KCFB Member	KCFB Plus (+) Member
<b>NEW OFFERINGS</b>				
___ MESH CITRUS BAG	1/4 Bu. (10 #) fill with citrus mix of YOUR choice at pick-up, 10 lbs.	\$20.00	\$18.50	\$17.50
___ MIXED CITRUS BOX	2/5 Bu. 16-20 Mandarins, 18-20 Navel Oranges, 6 Red Grapefruit	\$40.10	\$34.40	\$32.78
<b>CITRUS BOXES</b>				
___ GRAPEFRUIT (RED)	2/5 Bu. (Texas)	\$24.75	\$20.00	\$19.05
___ GRAPEFRUIT (RED)	4/5 Bu. "	\$42.68	\$35.35	\$33.68
___ NAVEL ORANGES	2/5 Bu. (Calif./Fla.)	\$26.43	\$21.55	\$20.57
___ NAVEL ORANGES	4/5 Bu. "	\$46.25	\$40.00	\$38.15
___ CLEMENTINES	1/5 Bu. (California)	\$25.43	\$20.55	\$19.57
___ CLEMENTINES	2/5 Bu. (California)	\$45.98	\$43.89	\$41.80
<b>MIXED BOXES</b>				
___ HOLIDAY GIFT BOX	18-20 Navel oranges, 4 Grapefruit, 10 Red Delicious apples	\$40.10	\$34.40	\$32.78
___ GRAND SLAM PACK	6 Red Delicious Apples, 6 D'Anjou pears, 3 Golden Delicious apples, 18-20 navel oranges	\$40.10	\$34.40	\$32.78
<b>NUTS</b>				
___ PEANUTS - 16 Oz. Skinless Can		\$ 7.20	\$ 6.00	\$ 5.70
___ HONEY KRUNCH PEANUTS - 12 Oz. Can		\$ 7.10	\$ 5.00	\$ 4.75
___ PECAN HALVES - 16 Oz. Bag		\$12.60	\$10.50	\$ 9.97
___ MILK CHOCOLATE COVERED PECANS - 12 Oz. Bag		\$12.00	\$10.00	\$ 9.50
___ MILK CHOCOLATE COVERED PEANUTS - 12 Oz. Can		\$ 6.60	\$ 5.50	\$ 5.23
___ HONEY ROASTED PECANS - 9 Oz Can		\$11.40	\$ 9.50	\$ 9.03
___ MILK CHOCOLATE PECAN CLUSTERS - 9 Oz Box		\$ 9.00	\$ 7.50	\$ 7.13
___ DARK CHOCOLATE SEA SALT CARAMELS - 8 Oz Box		\$ 8.50	\$ 7.50	\$ 7.13
<b>MISCELLANEOUS</b>				
___ POPCORN, Yellow 2 Lb Bag		\$ 4.20	\$ 3.50	\$ 3.00
___ BBQ SPICE, 12 Oz. Shaker Jar		\$11.26	\$ 9.38	\$ 8.91
<b>MEAT - 5 LB BOX</b> (all individually wrapped)				
___ BOURBON SIRLOIN STEAKS, 8 Oz.(4 #)		\$41.00	\$37.00	\$35.15
___ PORK CHOPS - 8 Oz, Seasoned, Bone-In (5 #)		\$26.50	\$26.20	\$24.90
___ PORK CHOPS - 8 Oz, Seasoned, Boneless (5 #)		\$27.39	\$26.20	\$24.90
___ PORK CHOPS - 10 Oz, Seasoned, Boneless (5 #)		\$27.39	\$26.20	\$24.90
___ LEMON ROSEMARY PORK ROAST / Qty 3, 24 Oz Per Box		\$21.93	\$19.94	\$18.94
___ \$25 INCLUDED FOR PLUS MEMBER PRICING (additional benefits apply)				\$25.00
___ TOTAL # ITEMS ORDERED	___ TOTAL AMOUNT DUE	___	___	___

All prices include applicable sales tax.

