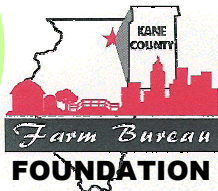


Kane County Farm Bureau FOUNDATION

2011 Report to Donors & Contributors



Kane County Farm Bureau Foundation Programs & Activities

Scholarship Programs

President's Scholarship

Recognizes the most outstanding local high school seniors seeking higher education in an agricultural field of study. The 2011-12 award of \$1,500 was received by **Buddy Haas of Elburn**.



Chuck Swanson Memorial Scholarship

Kate St. John of Sugar

Grove was named the recipient of this award, established by the family & friends of former Farm Bureau Director and long-time volunteer, Chuck Swanson. It provides a \$1,250 award for a student residing in Kane County pursuing a degree in an ag related career field.



John Buck Memorial Scholarship

Matthew Paulsen of Clare received this \$1,000 award that goes to a student in the 8 county Buck Bros./J.W. Turf service area. The scholarship was established in 2001 by an endowment in memory of Buck Bros. Inc. founder John Buck by friends & family of the late John Deere dealer.



John Buck Scholars

- 2011 Matthew Paulsen
- 2010 Drake Hislop
- 2009 Chris Paulsen
- 2008 Alan Warhurst
- 2007 Katie Stoll
- 2006 Dan Hartmann
- 2005 Kirk Meyer
- 2004 Shannon Smith
- 2003 Catherine McDonald
- 2002 Stephanie Stout

Foundation General Scholarships

Awarded to students pursuing degrees in agricultural fields whose parents have been KCFB members for at least the past 2 years. Recipients receive a minimum of \$1,000. Awards totaled \$17,000 for 2011-12.



SPROUTS



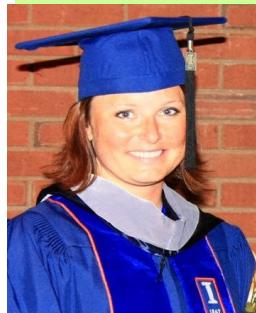
Spring Program of Reading Outreach to Urban Teachers and Students

Introduced to Kane County classrooms in 2008, the (Spring Program of Reading Outreach to Urban Teachers & Students) reached 50 third grade classrooms in 2011. Volunteers read a farm-themed book, *Heartland*, to 1,500 students and explained how farmers grow the world's food.

A copy of the book *Farmer George Plants a Nation*, was donated to each classroom, as well as to 10 Kane County libraries, thanks to a memorial fund in memory of Bob Konen established by family and friends for SPROUTS.

SCHOLARSHIP SPOTLIGHT

Dr. Lynda Gould received Foundation scholarships in six of her 8 years at the U of I.



"KCFB Foundation scholarships, allowed me to accept unpaid summer positions & travel that made me a more rounded person, and I hope a better vet."

- Dr. Lynda Gould

Rep. Dennis Hastert & the USDA Dairy Vet School, & travels to work & study in Texas, California & New York.

Lynda is now Associate Veterinarian at the Ashton Animal Clinic in Ashton, IL treating animals large and small.

Harvest for ALL

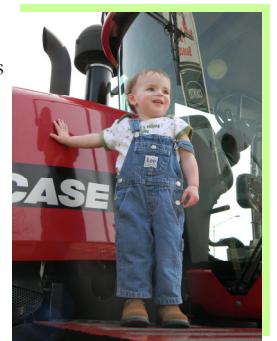
Created in 2009 to provide hunger relief in challenging economic times, **Harvest for ALL**, has gathered more than \$37,000 in donations for local food pantries. It turns crop proceeds into food on pantry shelves. Donors choose the pantry that benefits & anyone can participate.



The program promotes leadership by farmers and ag industry professionals in the area of hunger awareness, while educating the public where their food comes from.

Touch-A-Tractor

The 6th Annual Touch-A-Tractor on the Farm Bureau lawn saw record crowds, providing great exposure for the Foundation's efforts to teach kids about farming. Family activities include interactive fun for the kids & educational displays for adults. Our 21 Foundation scholars were honored at a ceremony just before the drawing of our annual raffle winners. Volunteers added to the community feel by grilling burgers & hot dogs and serving popcorn for visitors, with the proceeds benefitting future Foundation scholars & ag literacy programming.



THE KANE COUNTY FARM BUREAU FOUNDATION WAS ESTABLISHED TO PROMOTE EDUCATION, LEADERSHIP DEVELOPMENT & RESEARCH IN AGRICULTURAL FIELDS. FOR THE 2011-12 ACADEMIC YEAR, OVER \$25,000 HAS BEEN COMMITTED IN SCHOLARSHIPS AND INTERNSHIPS TO AREA COLLEGE STUDENTS PURSUING CAREERS IN ONE OF ILLINOIS' LARGEST INDUSTRIES, AGRICULTURE.



Discover more about the Kane County Farm Bureau Foundation at kanecfb.com/foundation

"FUN"draising

With thousands of dollars in prizes and a grand prize iconic of our industry, the **Winner's Choice Tractor Raffle** is a perennial favorite, the perfect grand finale at



another nicely restored antique tractor for our 2012 Grand Prize. Have one in mind? Give us a call at 630-584-8660.

Touch-A-Tractor, & our biggest annual fundraiser. Our 2011 grand prize winner, chose a new John Deere riding lawn mower over the 1950 Farmall Cub or \$2,500. We need

• Kane County Fair Country Store

The Fair provides the opportunity to raise funds and friends by the sale of farm-themed items. Buck Bros, Inc. of Hampshire and DeKane Implement of Big Rock cooperate in this effort, allowing the Foundation to sell farm toys on consignment.

• Bucket Raffles The Foundation holds an annual Bucket Raffle at the County Fair.

Local businesses donate merchandise & gift certificates, fairgoers buy raffle tickets to place in the bucket of the prize they hope to win. Funds go towards Foundation scholarships and internships for college students pursuing careers in agricultural fields of study.

**• John Buck Memorial Golf Outing**

Established in 2001 by an endowment in memory of the late John Deere dealer, the proceeds raised from this annual benefit fund John Buck Memorial Scholarships, administered by the Foundation.

Other Revenue Sources

• Member contributions An agreement between the Foundation & KCFB allows Farm Bureau members to make Foundation contributions with annual dues to KCFB.

• Foundation Memorials Memorials have been established by the family and friends of several Farm Bureau Members upon the passing of a loved one. Funds may be earmarked by contributors to benefit specific Foundation programs/scholarships.

Ag Literacy Library

The Foundation helps fund many Kane County Farm Bureau Ag Literacy Programs. The Ag Literacy Library at the Farm Bureau has hundreds of books with agricultural themes. Farm Bureau members can check out books on topics ranging from vegetable gardening to children's stories about life on the farm. Thanks to donations and memorial contributions the collection continues to grow.

**Ag Days**

In March, 1,500 fourth graders & their teachers participated in Kane County Farm Bureau's Ag-Days at Mooseheart. Now in its 27th year, it promotes the agricultural industry to students in a fun, educational and exciting way.

Students from urban and suburban areas experience the many facets of agriculture & how it affects their lives. Hundreds of volunteers make AgDays a success. The program's longevity and volunteer support show its importance and are the chief reason why the Foundation provides financial support.

**National AITC Conference**

Annual participation in National AITC Conference tours, workshops, exhibits & contacts help keep local AITC materials and presentations up-to-date on the latest technology in agriculture.

Bookmark Contest

Open to Kane County 4th graders, the contest creates awareness of agriculture's importance, with the theme, "Agriculture in Illinois". 2011 winners received a prize, a classroom visit from Ag Literacy Coordinator Suzi Meyers, and a popcorn party for the class, compliments of the Foundation.

FFA Chapter Grants

Established in 2009, FFA Chapter Grants recognize the contributions of Kane County FFA Chapters in the success of Foundation programs. In 2010, all 3 Kane County Chapters capitalized on the grant, each receiving \$500 for participation in KCFB activities & completion of a service project in their community. In 2011, grants of up to \$500 per chapter are available.

**U of I Extension Grant**

An annual Foundation grant to U of I Extension, Kane County helps fund Extension's 4-H, youth education, food and nutrition programs.

Internship Programs

Internships are offered by the Kane County Farm Bureau Foundation during summer, winter and mid-term breaks, to students who have completed 30 undergraduate hours. Structured to meet student needs, develop professional skills & build knowledge about agriculture.

**Summer Ag Institutes**

For the past 11 years, the Foundation has provided support for the KCFB Summer Ag Institute & Agricultural Tour for area teachers, a graduate credit course on agricultural research, inputs, production, processing and marketing.

The 1-week course provides a broad overview of Kane County farms, commodities and agribusiness.

In 2010 KCFB developed a second tour, Summer Ag Institute II. SAI graduates toured Northern IL to learn about renewable energy & how it relates to agriculture.

